



TIMBER SALE MAP

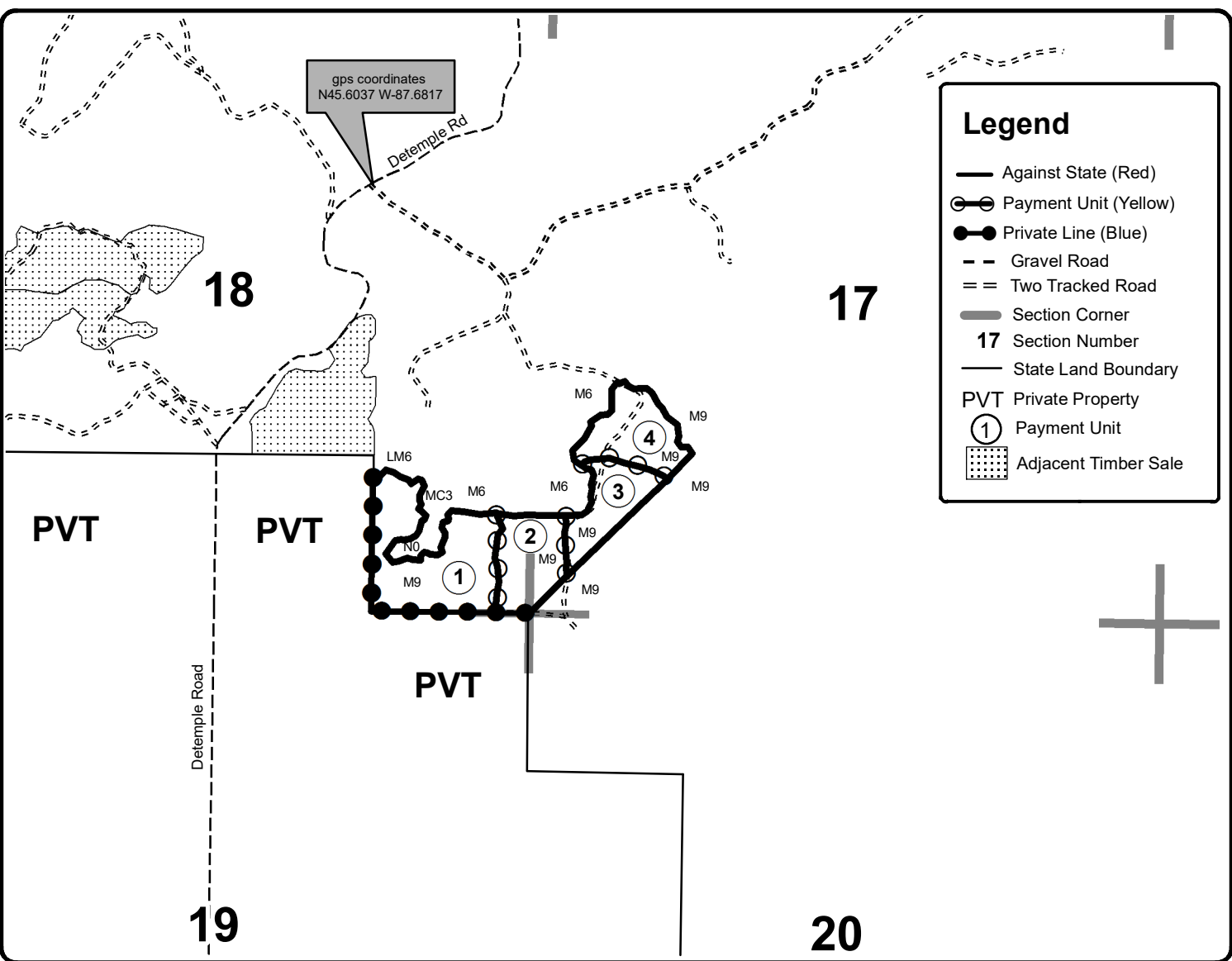
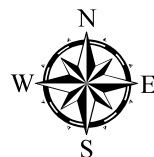
This information provided by authority of Part 525, 1994 PA 451, as amended.

Forest Management Unit Escanaba Management Unit		County Menominee County	Mapped By Beaudou	Date 7/20/2021	Page 1	of 1
Township 37N	Range 27W	Section(s) and Subdivision(s) Sec 17 - W1/2SW; Sec 18 - SESE.		Scale 1:15,840		

Cover Type				Density	
A = Aspen	H = Hemlock	N = Marsh	U = Upland Brush	0 = Non Stocked	5 = Pole Timber Medium
B = Paper Birch	J = Jack Pine	O = Oak	UM = Upland Mixed	1 = Seedling Sapling Poor	6 = Pole Timber Well
C = Cedar	L = Lowland Brush	P = Lowland Poplar	V = Bog or Marsh	2 = Seedling Sapling Medium	7 = Saw Timber Poor
D = Treed Bog	LM = Lowland Mixed	Q = Mixed Swamp Conifer	W = White Pine	3 = Seedling Sapling Well	8 = Saw Timber Medium
E = Swamp Hdwoods	M = Mpl, Bch, Brch	R = Red Pine	X = Non Stocked	4 = Pole Timber Poor	9 = Saw Timber Well
F = Spruce Fir	MC = Mixed Conifer	S = Black Spruce	Z = Water		
G = Grass	MD = Mixed Deciduous	T = Tamarack			

PU	Acres
1	19.9
2	9.6
3	8.3
4	10.0

**Carney Hardwood
Compartment 3
47.8 Acres**



Legend

- Against State (Red)
- Payment Unit (Yellow)
- Private Line (Blue)
- - Gravel Road
- == Two Tracked Road
- Section Corner
- 17 Section Number
- State Land Boundary
- PVT Private Property
- ① Payment Unit
- ▤ Adjacent Timber Sale

