



TIMBER SALE MAP

This information provided by authority of Part 525, 1994 PA 451, as amended.

Forest Management Unit Escanaba Management Unit		County Menominee County	Mapped By Beaudo	Date 7/23/2021	Page 1	of 1
Township 36N	Range 27W	Section(s) and Subdivision(s) Sec 14 - SWSW; Sec 15 - SWNW, W1/2SW, N1/2SE, SWSE; Sec 22 - NENW, NWNE.		Scale 1:15,840		

Cover Type

- | | | | |
|-------------------|----------------------|-------------------------|-------------------|
| A = Aspen | H = Hemlock | N = Marsh | U = Upland Brush |
| B = Paper Birch | J = Jack Pine | O = Oak | UM = Upland Mixed |
| C = Cedar | L = Lowland Brush | P = Lowland Poplar | V = Bog or Marsh |
| D = Treed Bog | LM = Lowland Mixed | Q = Mixed Swamp Conifer | W = White Pine |
| E = Swamp Hdwoods | M = Mpl, Bch, Brch | R = Red Pine | X = Non Stocked |
| F = Spruce Fir | MC = Mixed Conifer | S = Black Spruce | Z = Water |
| G = Grass | MD = Mixed Deciduous | T = Tamarack | |

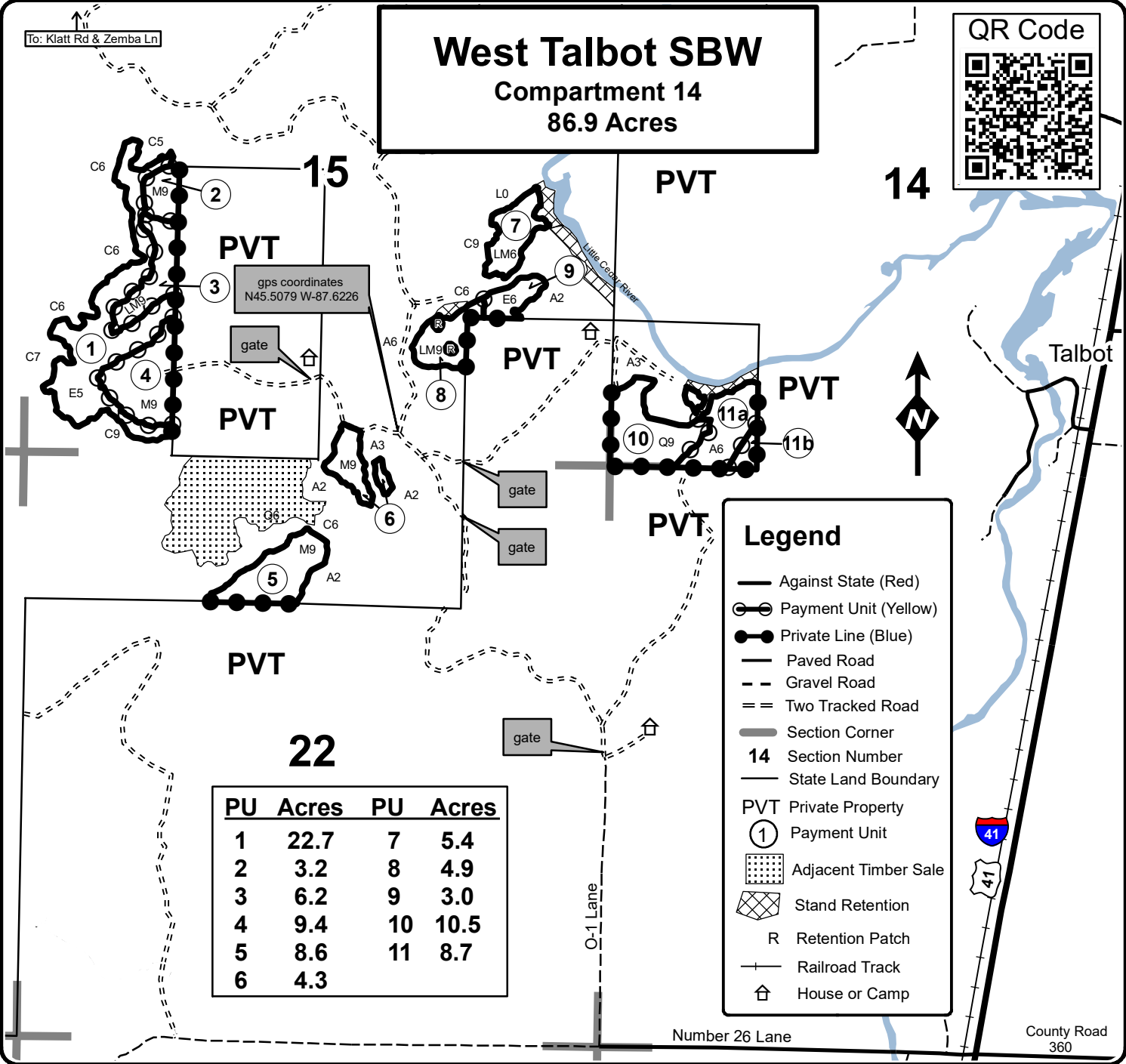
Density

- | | |
|-----------------------------|------------------------|
| 0 = Non Stocked | 5 = Pole Timber Medium |
| 1 = Seedling Sapling Poor | 6 = Pole Timber Well |
| 2 = Seedling Sapling Medium | 7 = Saw Timber Poor |
| 3 = Seedling Sapling Well | 8 = Saw Timber Medium |
| 4 = Pole Timber Poor | 9 = Saw Timber Well |

West Talbot SBW

Compartment 14

86.9 Acres

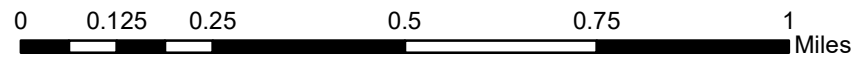


gps coordinates
N45.5079 W-87.6226

PU	Acres	PU	Acres
1	22.7	7	5.4
2	3.2	8	4.9
3	6.2	9	3.0
4	9.4	10	10.5
5	8.6	11	8.7
6	4.3		

Legend

- Against State (Red)
- ⊙ Payment Unit (Yellow)
- Private Line (Blue)
- Paved Road
- - Gravel Road
- = = Two Tracked Road
- Section Corner
- 14 Section Number
- State Land Boundary
- PVT Private Property
- ① Payment Unit
- ▨ Adjacent Timber Sale
- ▩ Stand Retention
- R Retention Patch
- Railroad Track
- ⌂ House or Camp



County Road 360