



TIMBER SALE MAP

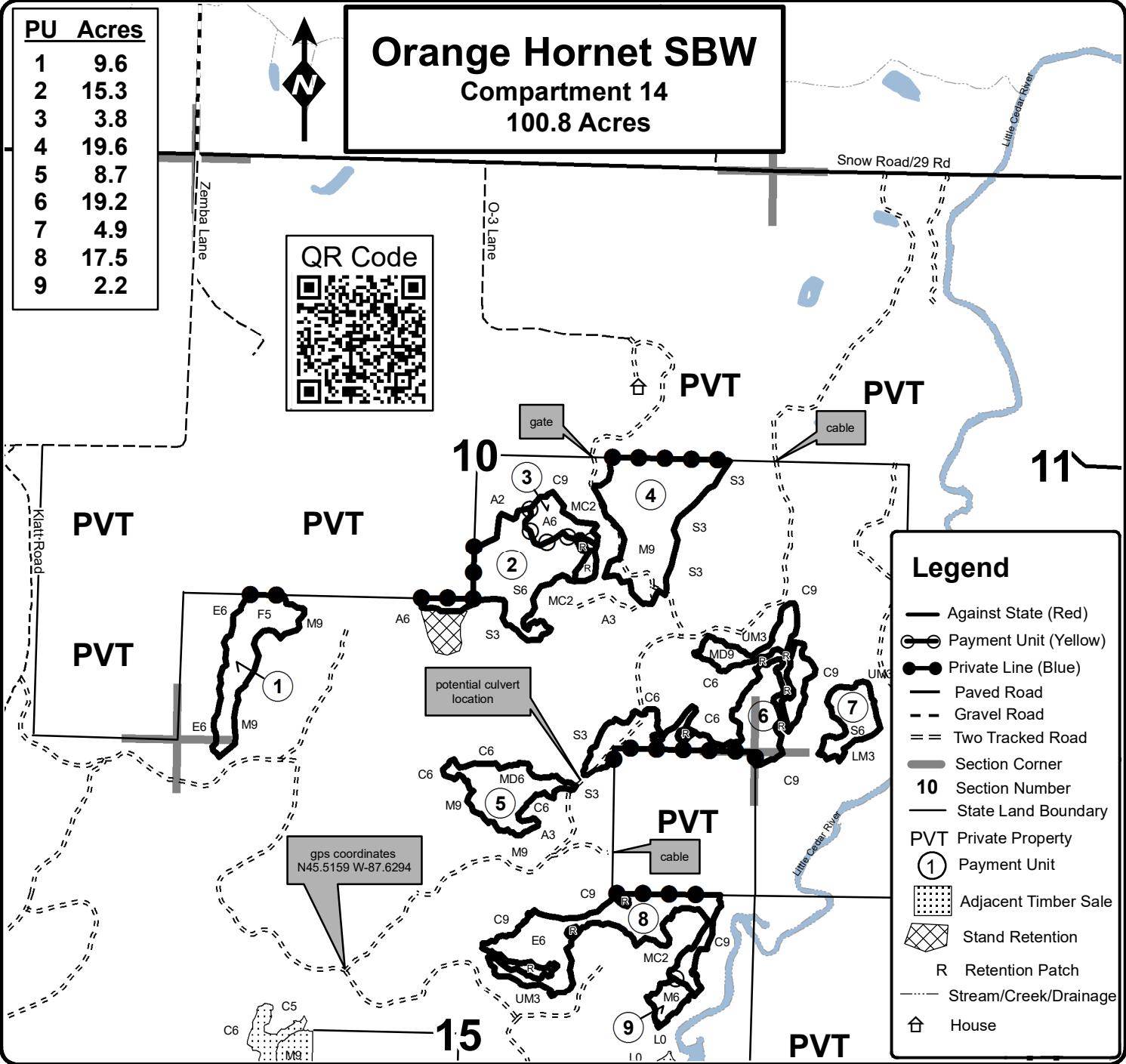
This information provided by authority of Part 525, 1994 PA 451, as amended.

Forest Management Unit Escanaba Management Unit		County Menominee County	Mapped By Beaudo	Date 8/9/2021	Page 1	of 1
Township 36N	Range 27W	Section(s) and Subdivision(s) Sec 10 - S1/2SW, SE; Sec 11 - W1/2SW; Sec 14 - NWNW; Sec 15 - N1/2NW, NWNE, S1/2NE.		Scale 1:15,840		

Cover Type				Density	
A = Aspen	H = Hemlock	N = Marsh	U = Upland Brush	0 = Non Stocked	5 = Pole Timber Medium
B = Paper Birch	J = Jack Pine	O = Oak	UM = Upland Mixed	1 = Seedling Sapling Poor	6 = Pole Timber Well
C = Cedar	L = Lowland Brush	P = Lowland Poplar	V = Bog or Marsh	2 = Seedling Sapling Medium	7 = Saw Timber Poor
D = Treed Bog	LM = Lowland Mixed	Q = Mixed Swamp Conifer	W = White Pine	3 = Seedling Sapling Well	8 = Saw Timber Medium
E = Swamp Hdwoods	M = Mpl, Bch, Brch	R = Red Pine	X = Non Stocked	4 = Pole Timber Poor	9 = Saw Timber Well
F = Spruce Fir	MC = Mixed Conifer	S = Black Spruce	Z = Water		
G = Grass	MD = Mixed Deciduous	T = Tamarack			

PU	Acres
1	9.6
2	15.3
3	3.8
4	19.6
5	8.7
6	19.2
7	4.9
8	17.5
9	2.2

Orange Hornet SBW
Compartment 14
100.8 Acres



Legend

- Against State (Red)
- Payment Unit (Yellow)
- Private Line (Blue)
- Paved Road
- - Gravel Road
- = = Two Tracked Road
- Section Corner
- 10** Section Number
- State Land Boundary
- PVT Private Property
- 1** Payment Unit
- ▨ Adjacent Timber Sale
- ▩ Stand Retention
- R Retention Patch
- Stream/Creek/Drainage
- 🏠 House

