

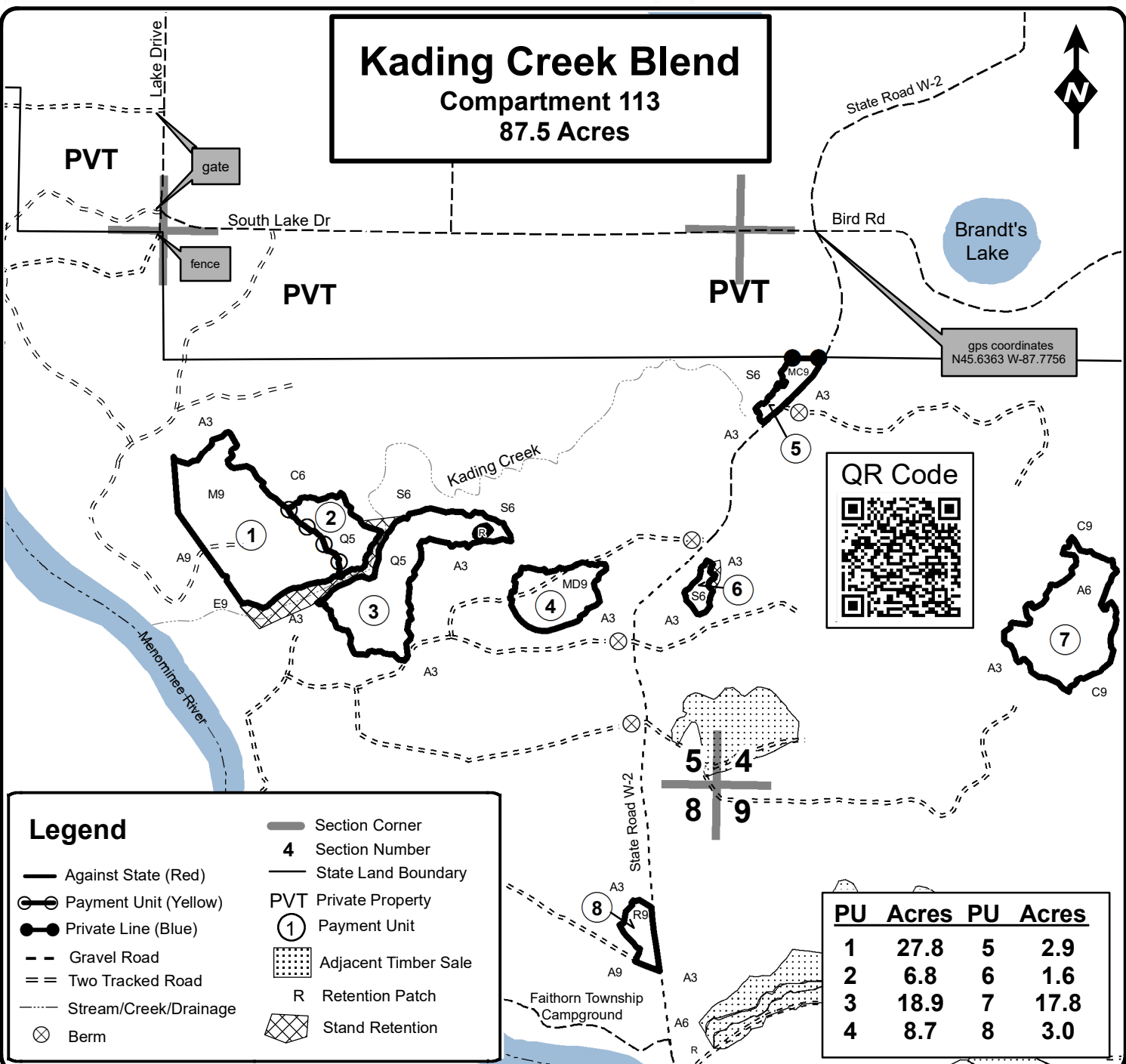


# TIMBER SALE MAP

This information provided by authority of Part 525, 1994 PA 451, as amended.

Forest Management Unit Escanaba Management Unit		County Menominee County	Mapped By Beaudou	Date 9/21/2021	Page 1	of 1
Township 37N	Range 28W	Section(s) and Subdivision(s) Sec 4 - SWNW, NESW, W1/2SE; Sec 5 - SWNW, N1/2SW, SESW, N1/2SE; Sec 8 - E1/2NE.		Scale 1:15,840		

Cover Type				Density	
A = Aspen	H = Hemlock	N = Marsh	U = Upland Brush	0 = Non Stocked	5 = Pole Timber Medium
B = Paper Birch	J = Jack Pine	O = Oak	UM = Upland Mixed	1 = Seedling Sapling Poor	6 = Pole Timber Well
C = Cedar	L = Lowland Brush	P = Lowland Poplar	V = Bog or Marsh	2 = Seedling Sapling Medium	7 = Saw Timber Poor
D = Treed Bog	LM = Lowland Mixed	Q = Mixed Swamp Conifer	W = White Pine	3 = Seedling Sapling Well	8 = Saw Timber Medium
E = Swamp Hdwoods	M = Mpl, Bch, Brch	R = Red Pine	X = Non Stocked	4 = Pole Timber Poor	9 = Saw Timber Well
F = Spruce Fir	MC = Mixed Conifer	S = Black Spruce	Z = Water		
G = Grass	MD = Mixed Deciduous	T = Tamarack			



Legend	
	Against State (Red)
	Payment Unit (Yellow)
	Private Line (Blue)
	Gravel Road
	Two Tracked Road
	Stream/Creek/Drainage
	Berm
	Section Corner
	Section Number
	State Land Boundary
	PVT Private Property
	Payment Unit
	Adjacent Timber Sale
	R Retention Patch
	Stand Retention

PU	Acres	PU	Acres
1	27.8	5	2.9
2	6.8	6	1.6
3	18.9	7	17.8
4	8.7	8	3.0

