



TIMBER SALE MAP

This information provided by authority of Part 525, 1994 PA 451, as amended.

Forest Management Unit		County	Mapped By	Date	Page	
Escanaba Management Unit		Menominee County	Beudo	5/26/2022	1	1
Township	Range	Section(s) and Subdivision(s)			Scale	
35N	25W	Sec 16 - S1/2NE, NESW, S1/2SW, SE; Sec 21 - NENW.			1:15,840	

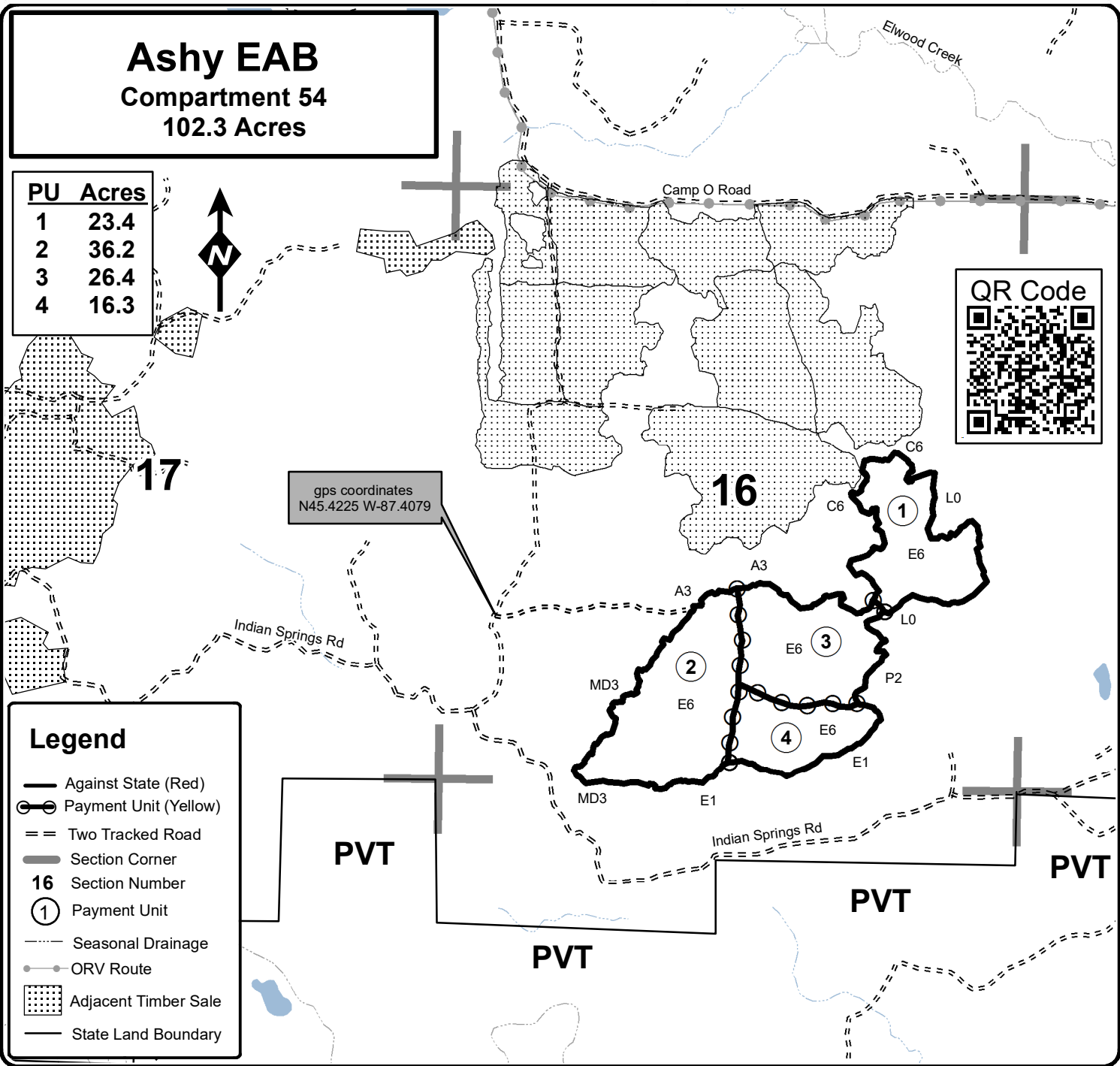
Cover Type				Density	
A = Aspen	H = Hemlock	N = Marsh	U = Upland Brush	0 = Non Stocked	5 = Pole Timber Medium
B = Paper Birch	J = Jack Pine	O = Oak	UM = Upland Mixed	1 = Seedling Sapling Poor	6 = Pole Timber Well
C = Cedar	L = Lowland Brush	P = Lowland Poplar	V = Bog or Marsh	2 = Seedling Sapling Medium	7 = Saw Timber Poor
D = Treed Bog	LM = Lowland Mixed	Q = Mixed Swamp Conifer	W = White Pine	3 = Seedling Sapling Well	8 = Saw Timber Medium
E = Swamp Hdwoods	M = Mpl, Bch, Brch	R = Red Pine	X = Non Stocked	4 = Pole Timber Poor	9 = Saw Timber Well
F = Spruce Fir	MC = Mixed Conifer	S = Black Spruce	Z = Water		
G = Grass	MD = Mixed Deciduous	T = Tamarack			

Ashy EAB Compartment 54 102.3 Acres

PU	Acres
1	23.4
2	36.2
3	26.4
4	16.3



gps coordinates
N45.4225 W-87.4079



Legend

- Against State (Red)
- ⊕ Payment Unit (Yellow)
- == Two Tracked Road
- Section Corner
- 16** Section Number
- ① Payment Unit
- Seasonal Drainage
- ORV Route
- ▨ Adjacent Timber Sale
- State Land Boundary

