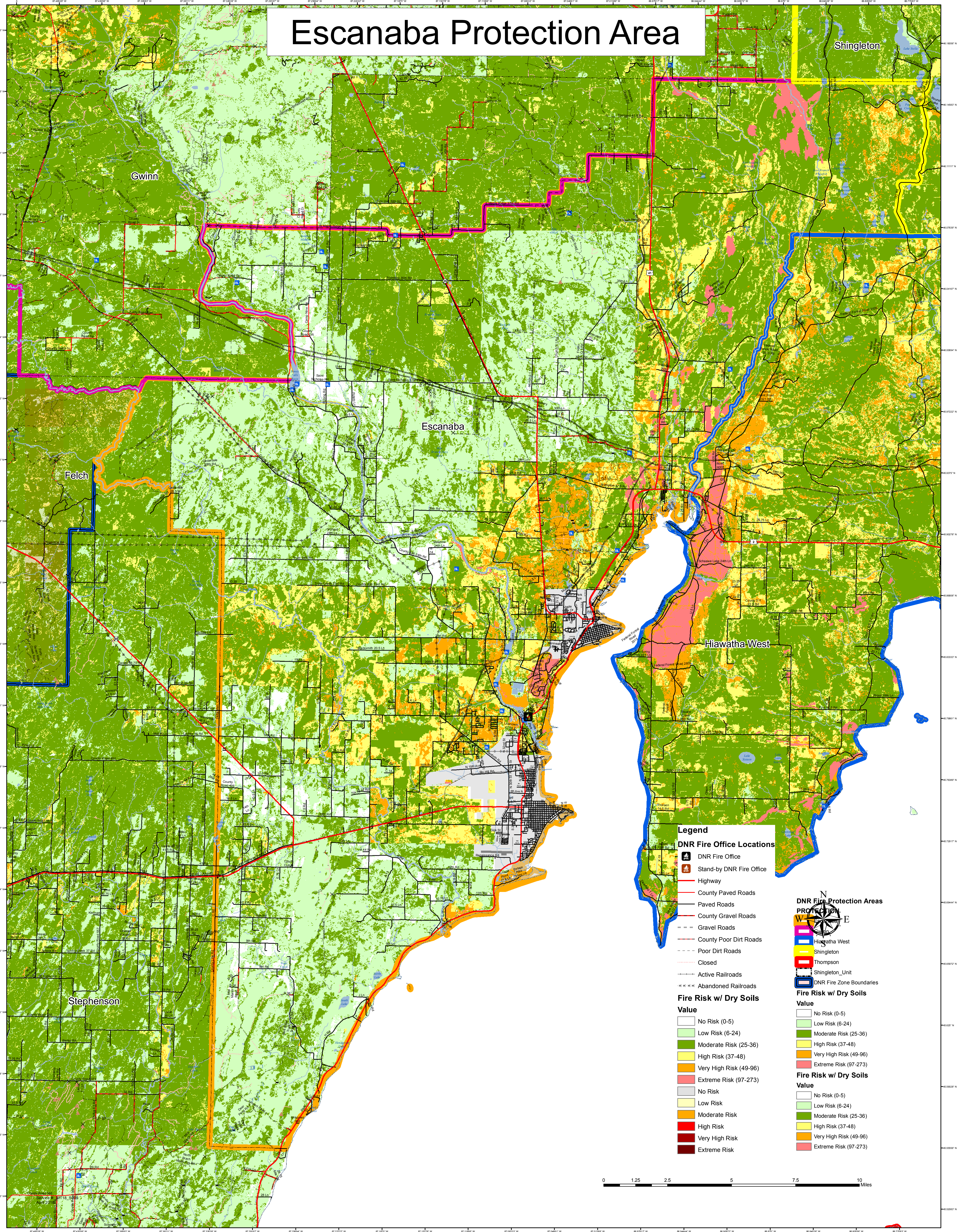


# Escanaba Protection Area



## Legend

### DNR Fire Office Locations

- DNR Fire Office
- Stand-by DNR Fire Office
- Highway
- County Paved Roads
- Paved Roads
- County Gravel Roads
- Gravel Roads
- County Poor Dirt Roads
- Poor Dirt Roads
- Closed
- Active Railroads
- Abandoned Railroads

### Fire Risk w/ Dry Soils

- Value**
- No Risk (0-5)
  - Low Risk (6-24)
  - Moderate Risk (25-36)
  - High Risk (37-48)
  - Very High Risk (49-96)
  - Extreme Risk (97-273)
- Value**
- No Risk
  - Low Risk
  - Moderate Risk
  - High Risk
  - Very High Risk
  - Extreme Risk

### DNR Fire Protection Areas

- Hiawatha West
- Shingleton
- Thompson
- Shingleton\_Unit
- DNR Fire Zone Boundaries

### Fire Risk w/ Dry Soils

- Value**
- No Risk (0-5)
  - Low Risk (6-24)
  - Moderate Risk (25-36)
  - High Risk (37-48)
  - Very High Risk (49-96)
  - Extreme Risk (97-273)
- Value**
- No Risk
  - Low Risk
  - Moderate Risk
  - High Risk
  - Very High Risk
  - Extreme Risk

