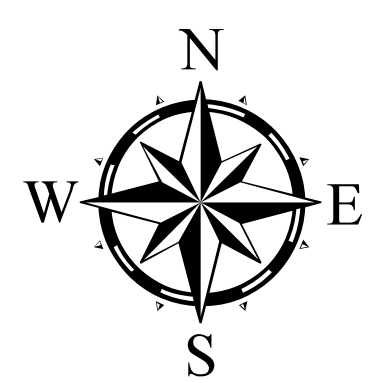
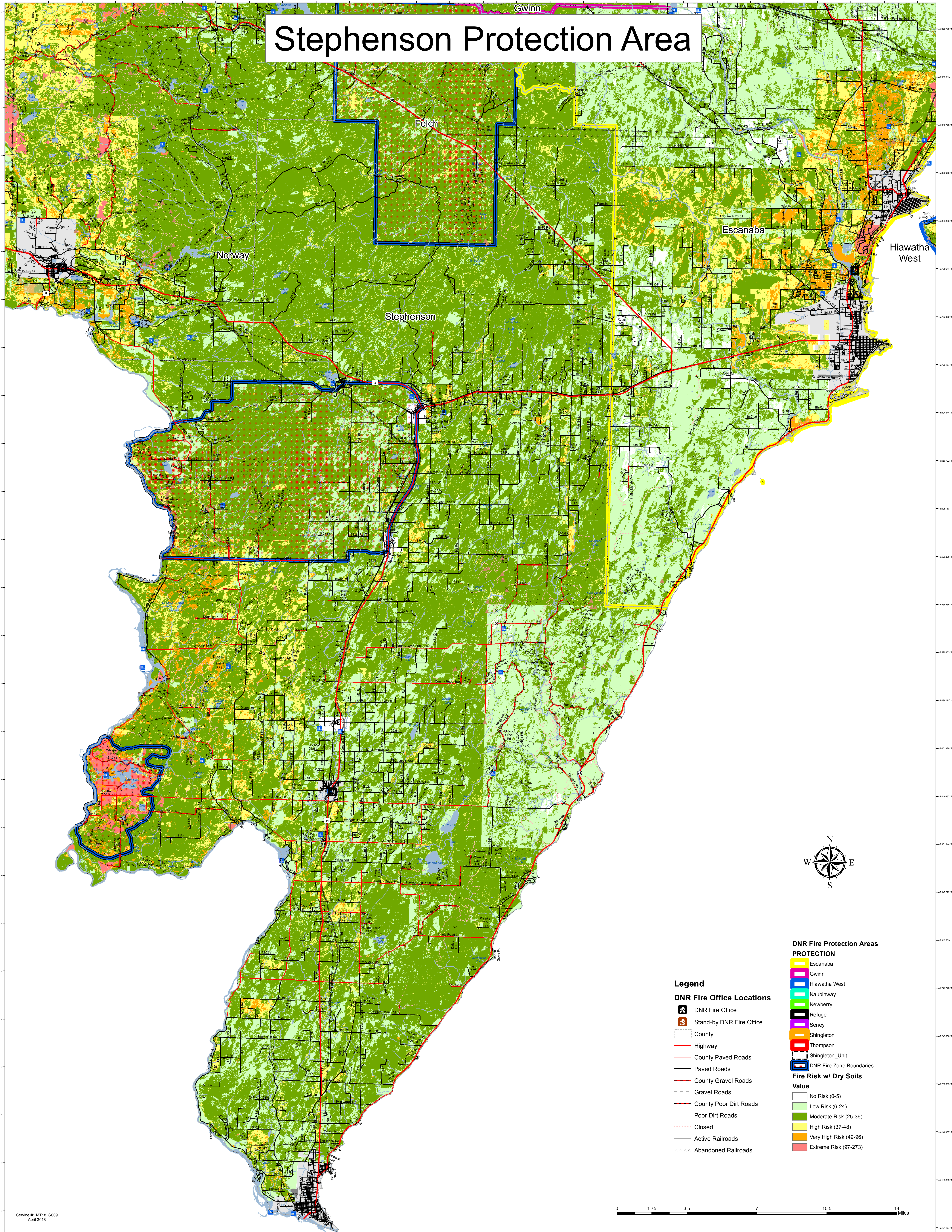


Stephenson Protection Area



Legend

- DNR Fire Office Locations**
- DNR Fire Office
 - Stand-by DNR Fire Office
 - County
 - Highway
 - County Paved Roads
 - Paved Roads
 - County Gravel Roads
 - Gravel Roads
 - County Poor Dirt Roads
 - Poor Dirt Roads
 - Closed
 - Active Railroads
 - Abandoned Railroads

DNR Fire Protection Areas

- Escanaba
- Gwinn
- Hiawatha West
- Naubinway
- Newberry
- Refuge
- Seney
- Shingleton
- Thompson
- Shingleton_Unit
- DNR Fire Zone Boundaries

Fire Risk w/ Dry Soils

- Value**
- No Risk (0-5)
 - Low Risk (6-24)
 - Moderate Risk (25-36)
 - High Risk (37-48)
 - Very High Risk (49-96)
 - Extreme Risk (97-273)

