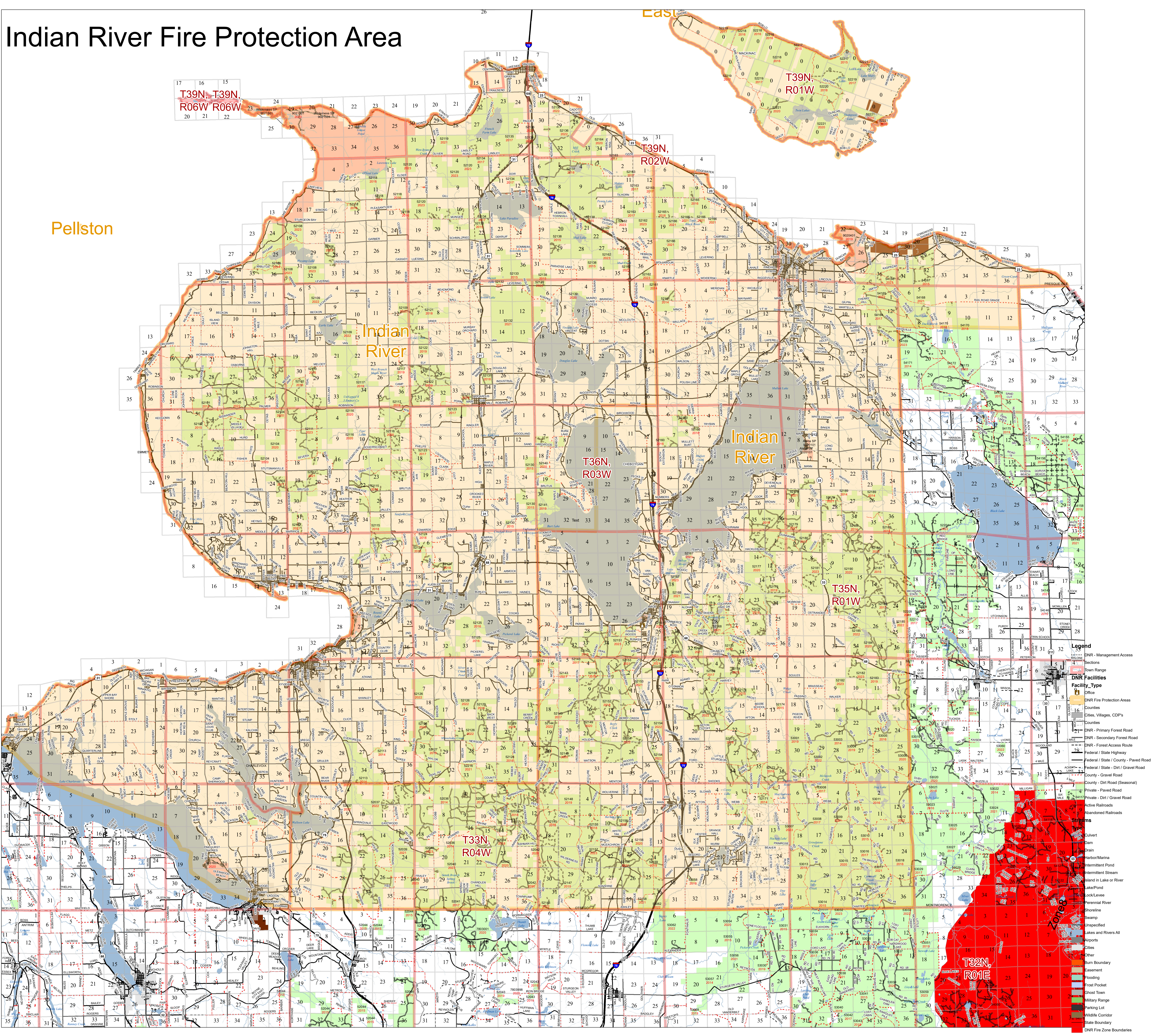


Indian River Fire Protection Area



T39N, T39N,
R06W, R06W

T39N,
R01W

T39N,
R02W

Pellston

Indian
River

Indian
River

T36N,
R03W

T35N,
R01W

T33N,
R04W

T32N,
R01E

- DNR - Management Access
- Sections
- Town Range
- DNR Facility Type
- Office
- DNR Fire Protection Areas
- Counties, Villages, CDPs
- Counties
- DNR - Primary Forest Road
- DNR - Secondary Forest Road
- DNR - Forest Access Route
- Federal / State Highway
- Federal / State / County - Paved Road
- County - Gravel Road
- County - Dirt Road (Seasonal)
- Private - Paved Road
- Private - Dirt / Gravel Road
- Active Railroads
- Abandoned Railroads
- Streams
- Culvert
- Dam
- Drain
- Harbor/Marina
- Intermittent Pond
- Intermittent Stream
- Island in Lake or River
- Lake/Pond
- Stock/Levee
- Shoreline
- Swamp
- Undesignated
- Lakes and Rivers All
- Airports
- Cities
- Other
- Burn Boundary
- Easement
- Flooding
- Frost Pocket
- Ghost Town
- Military Range
- Parking Lot
- Wildlife Corridor
- State Boundary
- DNR Fire Zone Boundaries