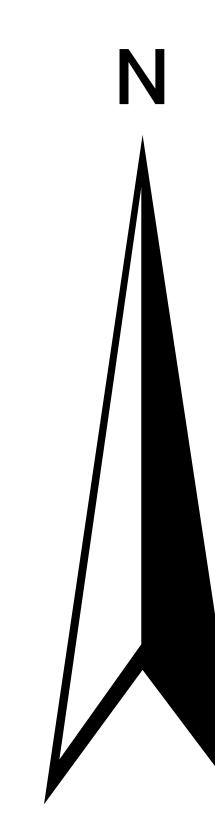
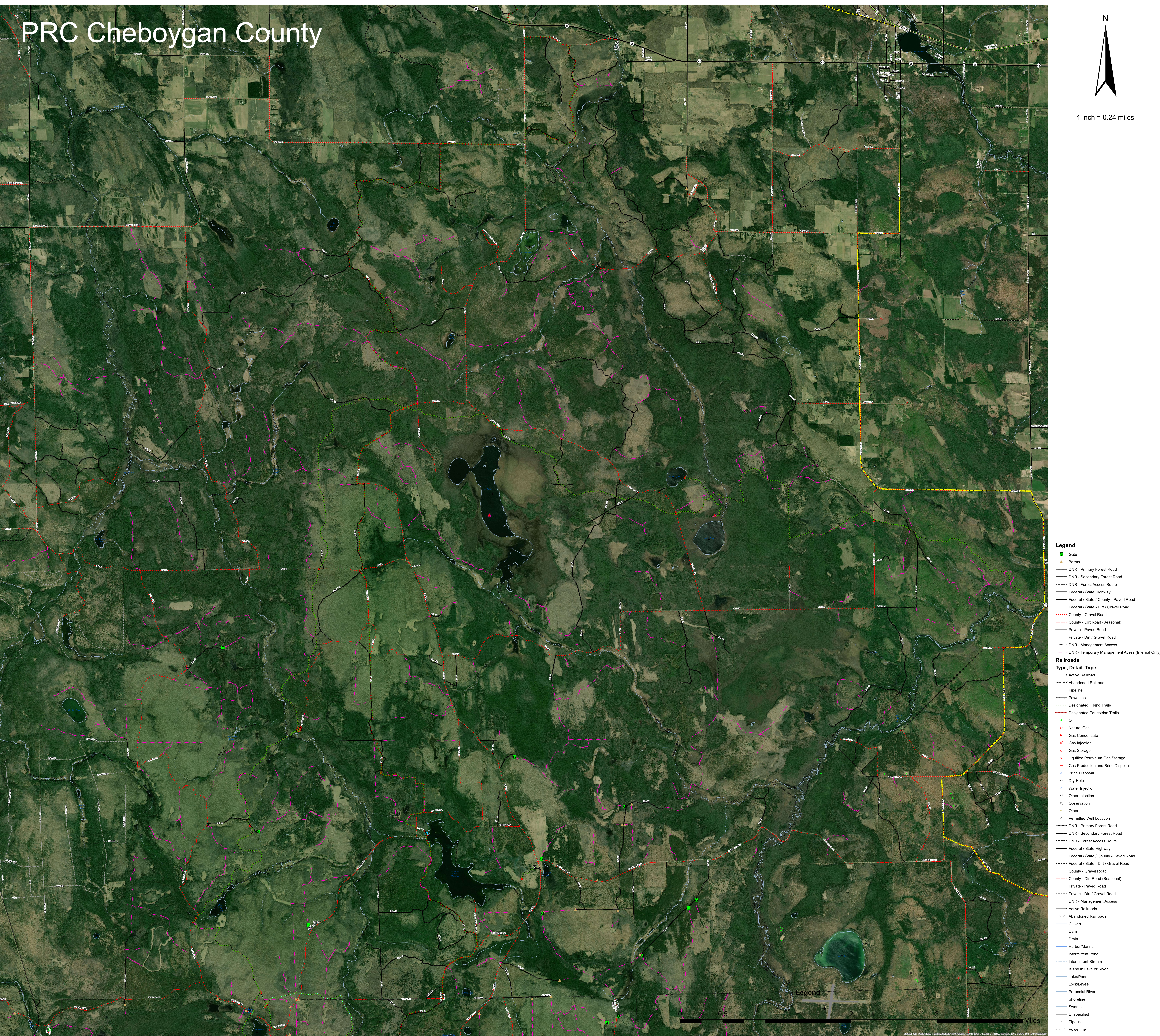


# PRC Cheboygan County



1 inch = 0.24 miles



### Legend

- Gate
- Berms
- DNR - Primary Forest Road
- DNR - Secondary Forest Road
- DNR - Forest Access Route
- Federal / State / County - Paved Road
- Federal / State - Dirt / Gravel Road
- County - Gravel Road
- County - Dirt Road (Seasonal)
- Private - Paved Road
- Private - Dirt / Gravel Road
- DNR - Management Access
- DNR - Temporary Management Access (Internal Only)

### Railroads

#### Type, Detail\_Type

- Active Railroad
- Abandoned Railroad
- Pipeline
- Powerline
- Designated Hiking Trails
- Designated Equestrian Trails
- Oil
- Natural Gas
- Gas Condensate
- Gas Injection
- Gas Storage
- Liquified Petroleum Gas Storage
- Gas Production and Brine Disposal
- Brine Disposal
- Dry Hole
- Water Injection
- Other Injection
- Observation
- Other
- Permitted Well Location
- DNR - Primary Forest Road
- DNR - Secondary Forest Road
- DNR - Forest Access Route
- Federal / State Highway
- Federal / State / County - Paved Road
- Federal / State - Dirt / Gravel Road
- County - Gravel Road
- County - Dirt Road (Seasonal)
- Private - Paved Road
- Private - Dirt / Gravel Road
- DNR - Management Access
- Active Railroads
- Abandoned Railroads
- Culvert
- Dam
- Drain
- Harbor/Marina
- Intermittent Pond
- Intermittent Stream
- Island in Lake or River
- Lake/Pond
- Lock/Levee
- Perennial River
- Shoreline
- Swamp
- Unspecified
- Pipeline
- Powerline

Legend

