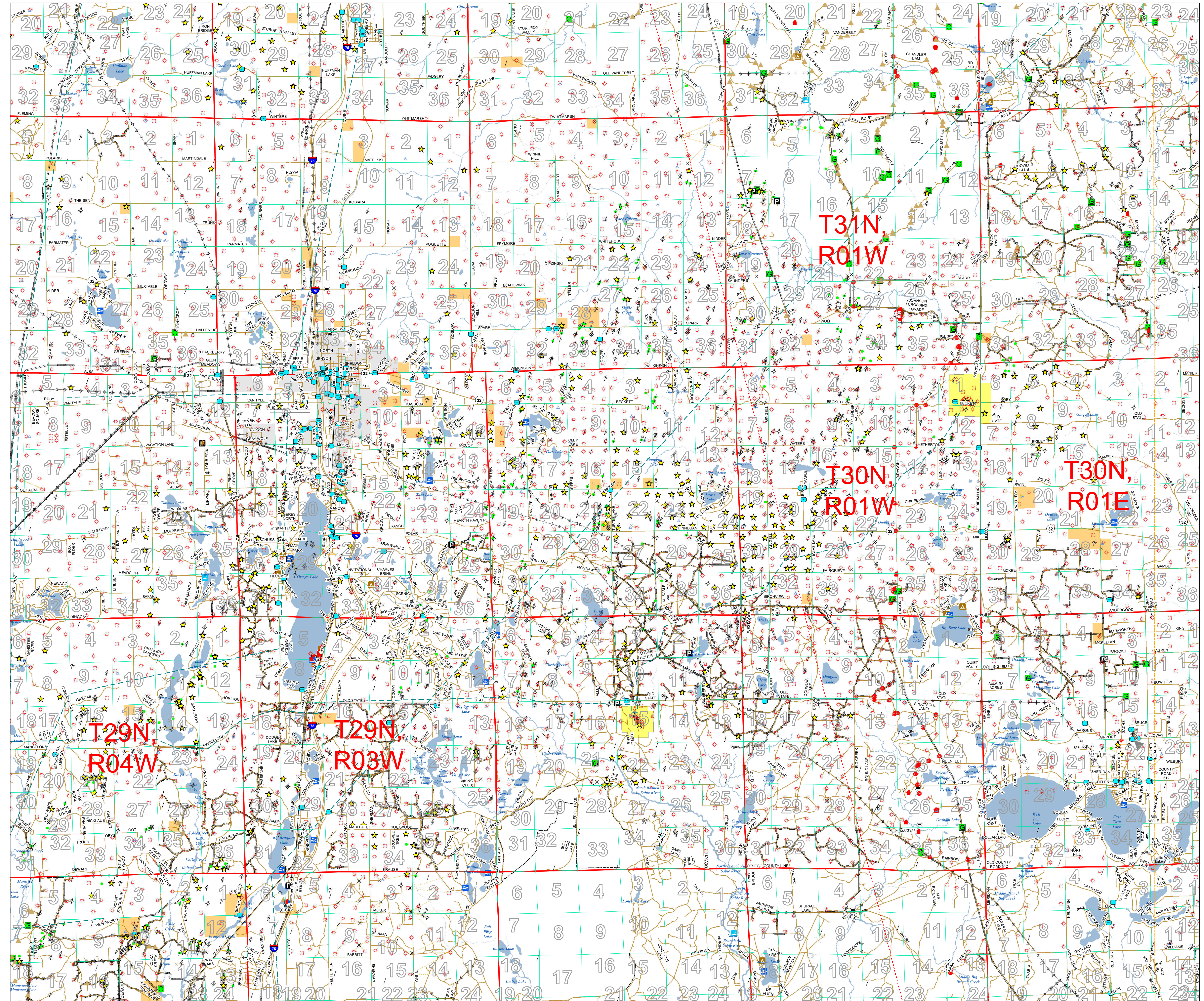


Utilities, Gaylord M32-Vienna +/- 10 Miles



Legend

- ★ Oil & Gas Well Hydrogen Sulfide Wells
- Mines
- Underground Storage Tanks

Railroads

Type, Detail_Type

- Active Railroad
- ××× Abandoned Railroad

Pipelines_MI_EIA

ProductType

- Crude Oil
- Hydrocarbon Gas Liquids
- Natural Gas
- Petroleum
- Sections
- Town Range
- Counties

- / Oil & Gas Wells Plugged Wells
- Oil
- Natural Gas
- Gas Condensate
- Gas Injection
- Gas Storage
- Liquefied Petroleum Gas Storage
- Gas Production and Brine Disposal
- Brine Disposal
- Dry Hole
- Water Injection
- Other Injection
- Observation
- Other
- Permitted Well Location
- Oil & Gas Well Surface Locations

- Directional
- Horizontal (90 deg.)
- DNR - Primary Forest Road
- DNR - Secondary Forest Road
- DNR - Forest Access Route
- Federal / State Highway
- Federal / State / County - Paved Road
- Federal / State - Dirt / Gravel Road
- County - Gravel Road
- County - Dirt Road (Seasonal)
- Private - Paved Road
- Private - Dirt / Gravel Road
- DNR - Management Access

- Pipeline
- Powerline
- Unspecified
- Fence
- Non-Designated Recreational Trail

- Airports
- Cities
- State Boundary
- Gas Storage Fields
- Sand & Gravel Pits

