



Sale Number	Year
72 - 046	19

TIMBER SALE MAP

This information provided by authority of Part 525, 1994 PA 451, as amended.

Forest Management Unit Graying		County Crawford	Mapped By Charlebois	Date 09/23/2019	Page 1	of 1
Township 26N	Range 1W	Section(s) and Subdivision(s) Sec 7: SESE, W1/2SE, E1/2SW		Scale 1:7,920		

Cover Type

A = Aspen	H = Hemlock	N = Marsh	U = Upland Brush
B = Paper Birch	J = Jack Pine	O = Oak	UM = Upland Mixed
C = Cedar	L = Lowland Brush	P = Lowland Poplar	V = Bog or Marsh
D = Tread Bog	LM = Lowland Mixed	Q = Mixed Swamp Conifer	W = White Pine
E = Swamp Hdwoods	M = Mpl, Bch, Brch	R = Red Pine	X = Non Stocked
F = Spruce Fir	MC = Mixed Conifer	S = Black Spruce	Z = Water
G = Grass	MD = Mixed Deciduous	T = Tamarack	

Density

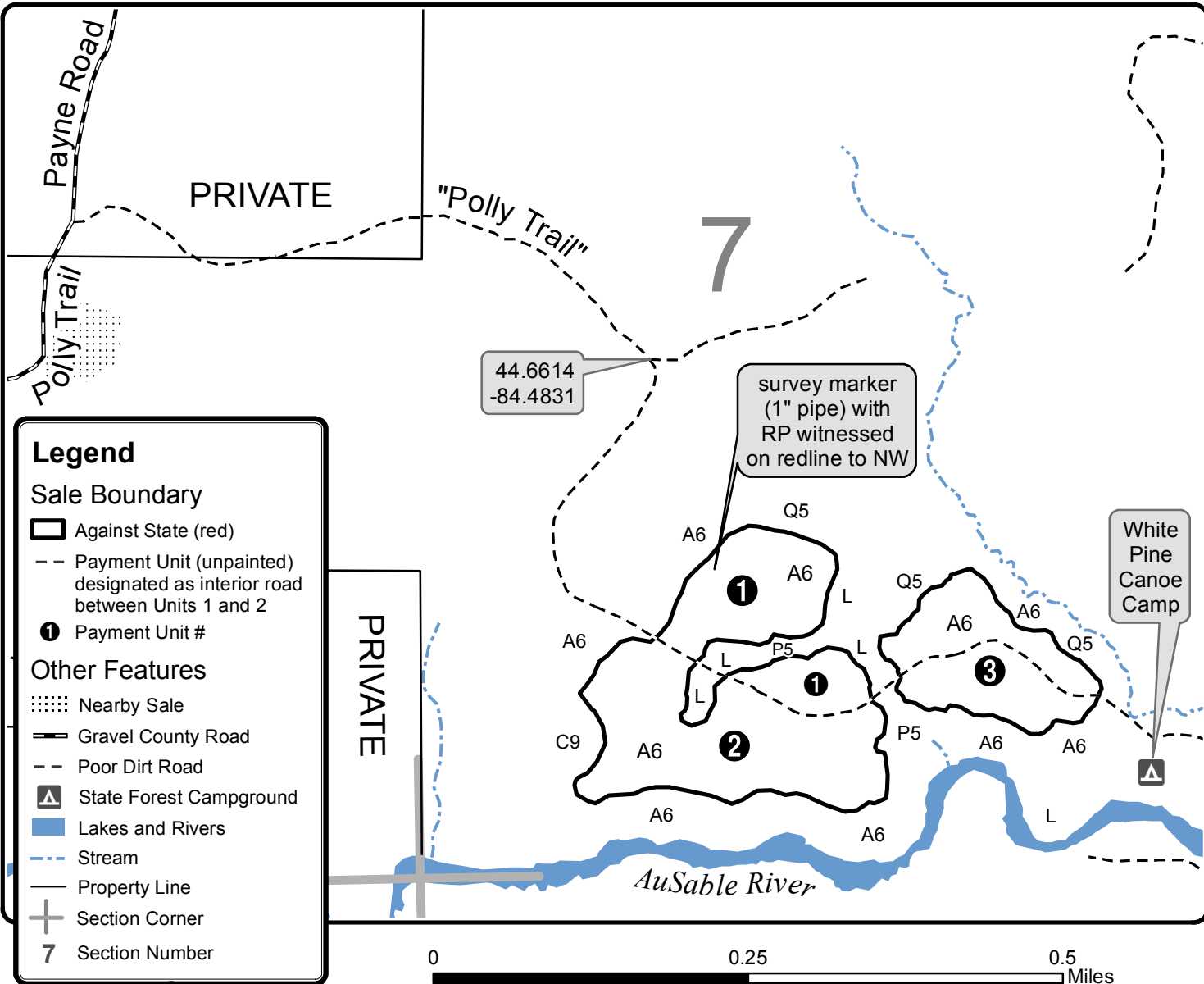
0 = Non Stocked	5 = Pole Timber Medium
1 = Seedling Sapling Poor	6 = Pole Timber Well
2 = Seedling Sapling Medium	7 = Saw Timber Poor
3 = Seedling Sapling Well	8 = Saw Timber Medium
4 = Pole Timber Poor	9 = Saw Timber Well

PU	Acres
1	8.7
2	13.1
3	8.4

Polly Trail Aspen

Compartment 280

30.2 Acres



Legend

- Sale Boundary**
 - Against State (red)
 - Payment Unit (unpainted) designated as interior road between Units 1 and 2
 - Payment Unit #
- Other Features**
 - Nearby Sale
 - Gravel County Road
 - Poor Dirt Road
 - State Forest Campground
 - Lakes and Rivers
 - Stream
 - Property Line
 - Section Corner
 - Section Number

