

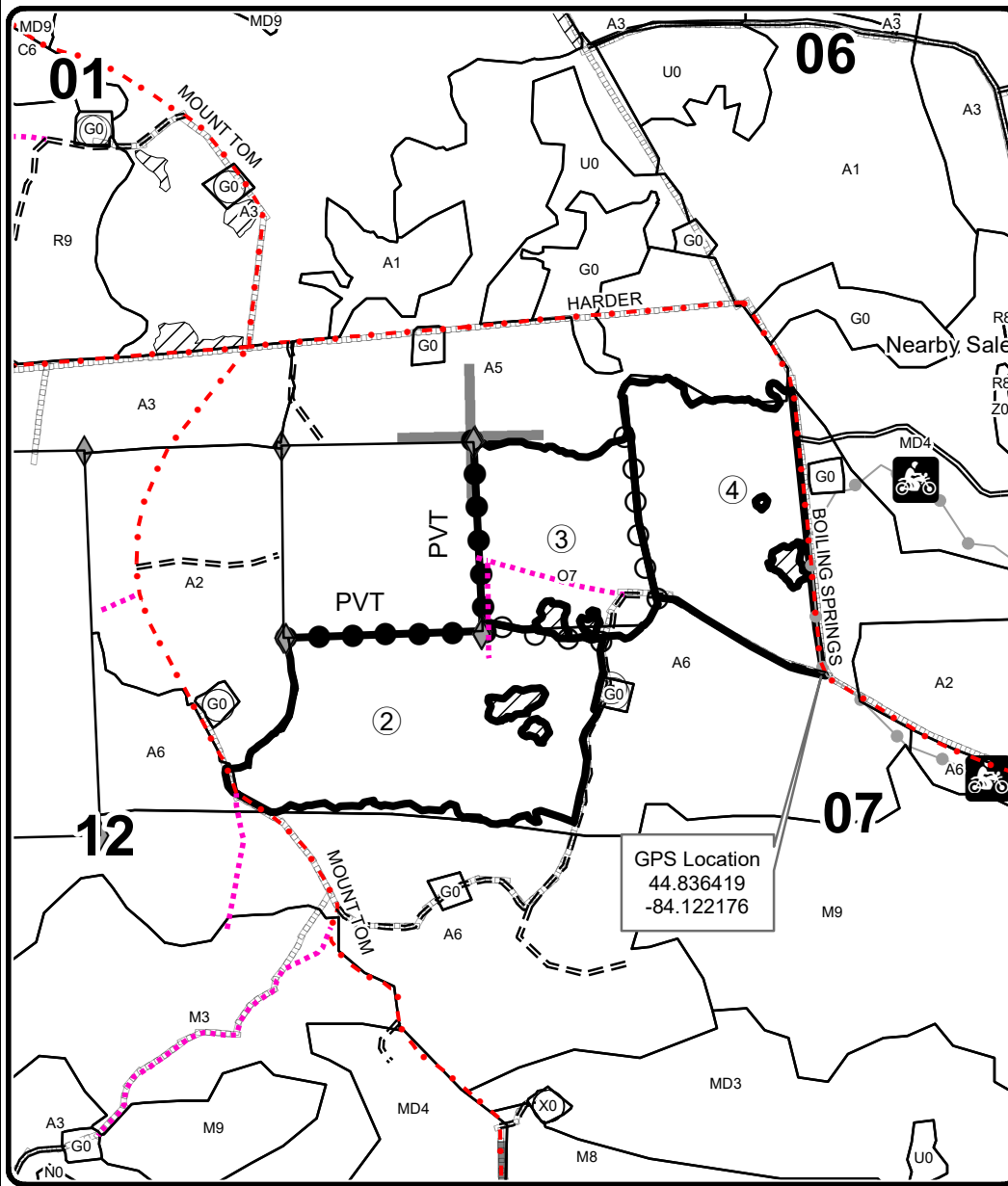
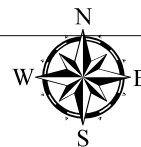


TIMBER SALE MAP

This information provided by authority of Part 525, 1994 PA 451, as amended.

Forest Management Unit Grayling		County Oscoda	Mapped By Price	Date 10/06/2022	Page 2	of 2
Township 28N	Range 02E/03E	Section(s) and Subdivision(s) R02 E - S12 S1/2NE & R03E - S6 S1/2NE & S7 NW		Scale 1:15,240		
Cover Type				Density		
A = Aspen	H = Hemlock	N = Marsh	U = Upland Brush	0 = Non Stocked	5 = Pole Timber Medium	
B = Paper Birch	J = Jack Pine	O = Oak	UM = Upland Mixed	1 = Seedling Sapling Poor	6 = Pole Timber Well	
C = Cedar	L = Lowland Brush	P = Lowland Poplar	V = Bog or Marsh	2 = Seedling Sapling Medium	7 = Saw Timber Poor	
D = Treed Bog	LM = Lowland Mixed	Q = Mixed Swamp Conifer	W = White Pine	3 = Seedling Sapling Well	8 = Saw Timber Medium	
E = Swamp Hdwoods	M = Mpl, Bch, Brch	R = Red Pine	X = Non Stocked	4 = Pole Timber Poor	9 = Saw Timber Well	
F = Spruce Fir	MC = Mixed Conifer	S = Black Spruce	Z = Water			
G = Grass	MD = Mixed Deciduous	T = Tamarack				

PU	Acres	PU	Acres	A Few Dollars More Aspen Oak	
1	26.2	4	42.2	Compartment 026 160.4 Acres	
2	60.0				
3	32.0				



Legend

- DNR - Secondary Forest Road
- DNR - Forest Access Route
- County - Gravel Road
- Against State (Red)
- Payment Unit (Yellow)
- Private Line (Blue)
- Stand Boundaries
- Recreational Trail
- Field Grade Corners
- Oil & Gas Well Surface Locations
- Retention Area
- Nearby Timber Sales
- Section Corners
- Recreational Trail
- Pipeline
- Payment Unit

QR Code For Avenza

