



TIMBER SALE MAP

This information provided by authority of Part 525, 1994 PA 451, as amended.

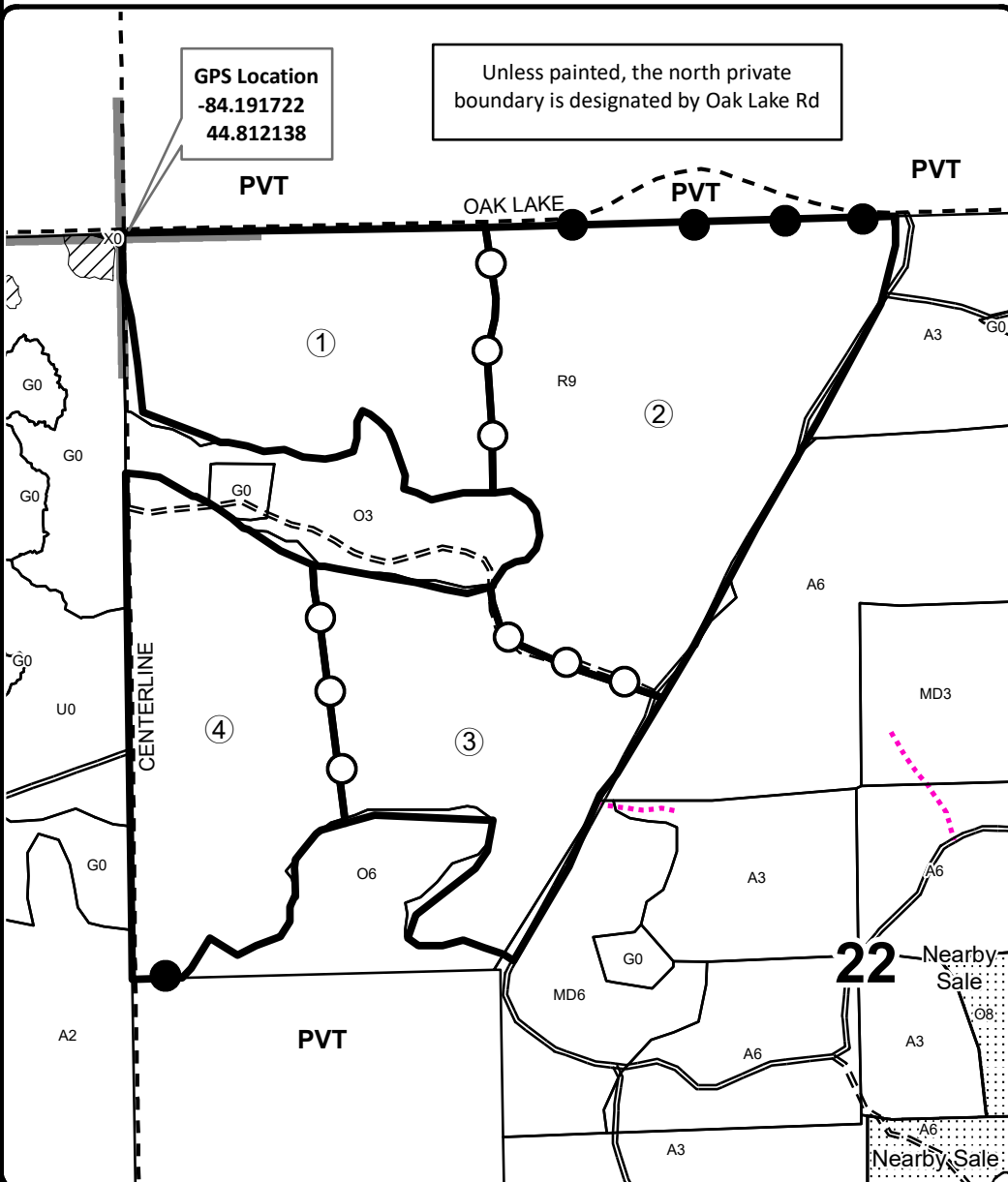
Forest Management Unit Grayling		County Oscoda	Mapped By Kubitskey	Date 12/15/2022	Page 1	of 1
Township 28N	Range 02E	Section(s) and Subdivision(s) Sec. 21 SENE, Sec 22 NW, NWNE		Scale 1:7,920		
Cover Type				Density		
A = Aspen	H = Hemlock	N = Marsh	U = Upland Brush	0 = Non Stocked	5 = Pole Timber Medium	
B = Paper Birch	J = Jack Pine	O = Oak	UM = Upland Mixed	1 = Seedling Sapling Poor	6 = Pole Timber Well	
C = Cedar	L = Lowland Brush	P = Lowland Poplar	V = Bog or Marsh	2 = Seedling Sapling Medium	7 = Saw Timber Poor	
D = Treed Bog	LM = Lowland Mixed	Q = Mixed Swamp Conifer	W = White Pine	3 = Seedling Sapling Well	8 = Saw Timber Medium	
E = Swamp Hdwoods	M = Mpl, Bch, Brch	R = Red Pine	X = Non Stocked	4 = Pole Timber Poor	9 = Saw Timber Well	
F = Spruce Fir	MC = Mixed Conifer	S = Black Spruce	Z = Water			
G = Grass	MD = Mixed Deciduous	T = Tamarack				

PU	Acres	PU	Acres
1	23.2	4	24.2
2	39.2		
3	21.3		

Comp 17 RP

Compartment 17

107.9 Acres



Legend

- Against State (Red)
- Payment Unit (Yellow)
- Private Line (Blue)
- Nearby Timber Sales
- Stand Boundaries
- Secondary Forest Road
- Forest Access Route
- Gravel Road
- Temporary Management Access
- Retention Area
- Payment Unit
- PVT** Private Property
- Section Corners

Locator Map

