



# TIMBER SALE MAP

This information provided by authority of Part 525, 1994 PA 451, as amended.

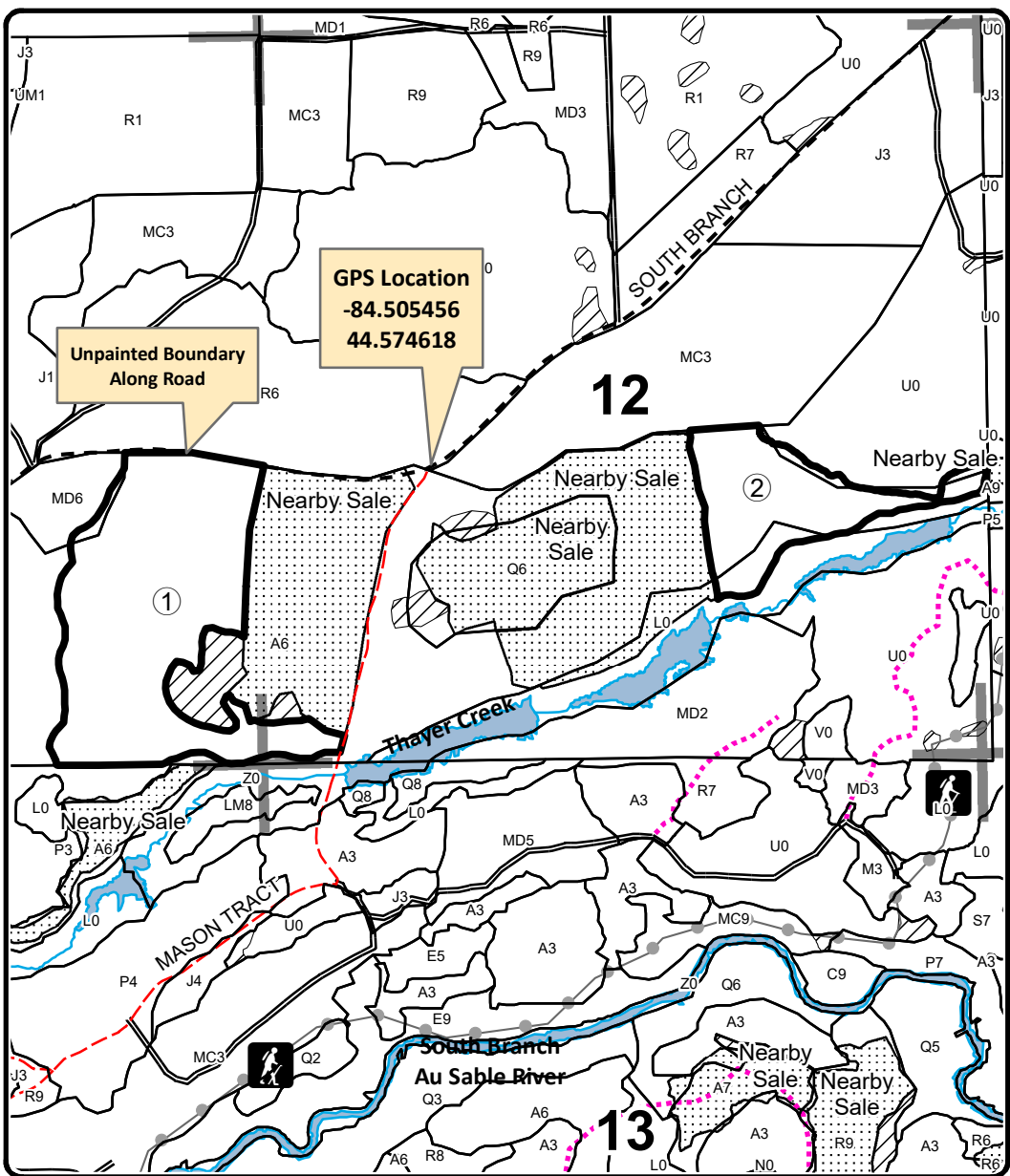
Forest Management Unit Grayling Management Unit		County Crawford	Mapped By Price, Nellis	Date 10/06/2021	Page 1	of 1
Township 25N	Range 02W	Section(s) and Subdivision(s) Sec. 11 SE & Sec. 12 SWSW, N1/2SE, SWSE			Scale 1:15,840	
Cover Type				Density		
A = Aspen	H = Hemlock	N = Marsh	U = Upland Brush	0 = Non Stocked	5 = Pole Timber Medium	
B = Paper Birch	J = Jack Pine	O = Oak	UM = Upland Mixed	1 = Seedling Sapling Poor	6 = Pole Timber Well	
C = Cedar	L = Lowland Brush	P = Lowland Poplar	V = Bog or Marsh	2 = Seedling Sapling Medium	7 = Saw Timber Poor	
D = Treed Bog	LM = Lowland Mixed	Q = Mixed Swamp Conifer	W = White Pine	3 = Seedling Sapling Well	8 = Saw Timber Medium	
E = Swamp Hdwoods	M = Mpl, Bch, Brch	R = Red Pine	X = Non Stocked	4 = Pole Timber Poor	9 = Saw Timber Well	
F = Spruce Fir	MC = Mixed Conifer	S = Black Spruce	Z = Water			
G = Grass	MD = Mixed Deciduous	T = Tamarack				

PU	Acres
1	61.0
2	24.3

## Fill Your Hands Aspen

### Compartment 298

### 85.3 Acres



### Legend

- Sale Boundary (Red)
- Retention Area (Red)
- Payment Unit
- Stand Boundaries
- Recreational Trail
- Secondary Forest Road
- Gravel Road
- County Road - Seasonal
- Temporary Management Access
- Perennial River
- Lakes and Rivers
- Nearby Timber Sales
- Section Corners

Avenza PDF Map

