



TIMBER SALE MAP

This information provided by authority of Part 525, 1994 PA 451, as amended.

| | | | | | |
|------------------------------------|--------------------|--|--------------------|-----------|---------|
| Forest Management Unit Grayling | County Crawford | Mapped By Scott McClarren | Date 06/03/2019 | Page 1 | of 1 |
| Township 27N | Range 04W | Section(s) and Subdivision(s) Sec. 36 NE, N1/2 SE, SENW, NESW | Scale 1:7,920 | | |

| Cover Type | | | | Density | |
|-------------------|----------------------|-------------------------|-------------------|-----------------------------|------------------------|
| A = Aspen | H = Hemlock | N = Marsh | U = Upland Brush | 0 = Non Stocked | 5 = Pole Timber Medium |
| B = Paper Birch | J = Jack Pine | O = Oak | UM = Upland Mixed | 1 = Seedling Sapling Poor | 6 = Pole Timber Well |
| C = Cedar | L = Lowland Brush | P = Lowland Poplar | V = Bog or Marsh | 2 = Seedling Sapling Medium | 7 = Saw Timber Poor |
| D = Treed Bog | LM = Lowland Mixed | Q = Mixed Swamp Conifer | W = White Pine | 3 = Seedling Sapling Well | 8 = Saw Timber Medium |
| E = Swamp Hdwoods | M = Mpl, Bch, Brch | R = Red Pine | X = Non Stocked | 4 = Pole Timber Poor | 9 = Saw Timber Well |
| F = Spruce Fir | MC = Mixed Conifer | S = Black Spruce | Z = Water | | |
| G = Grass | MD = Mixed Deciduous | T = Tamarack | | | |

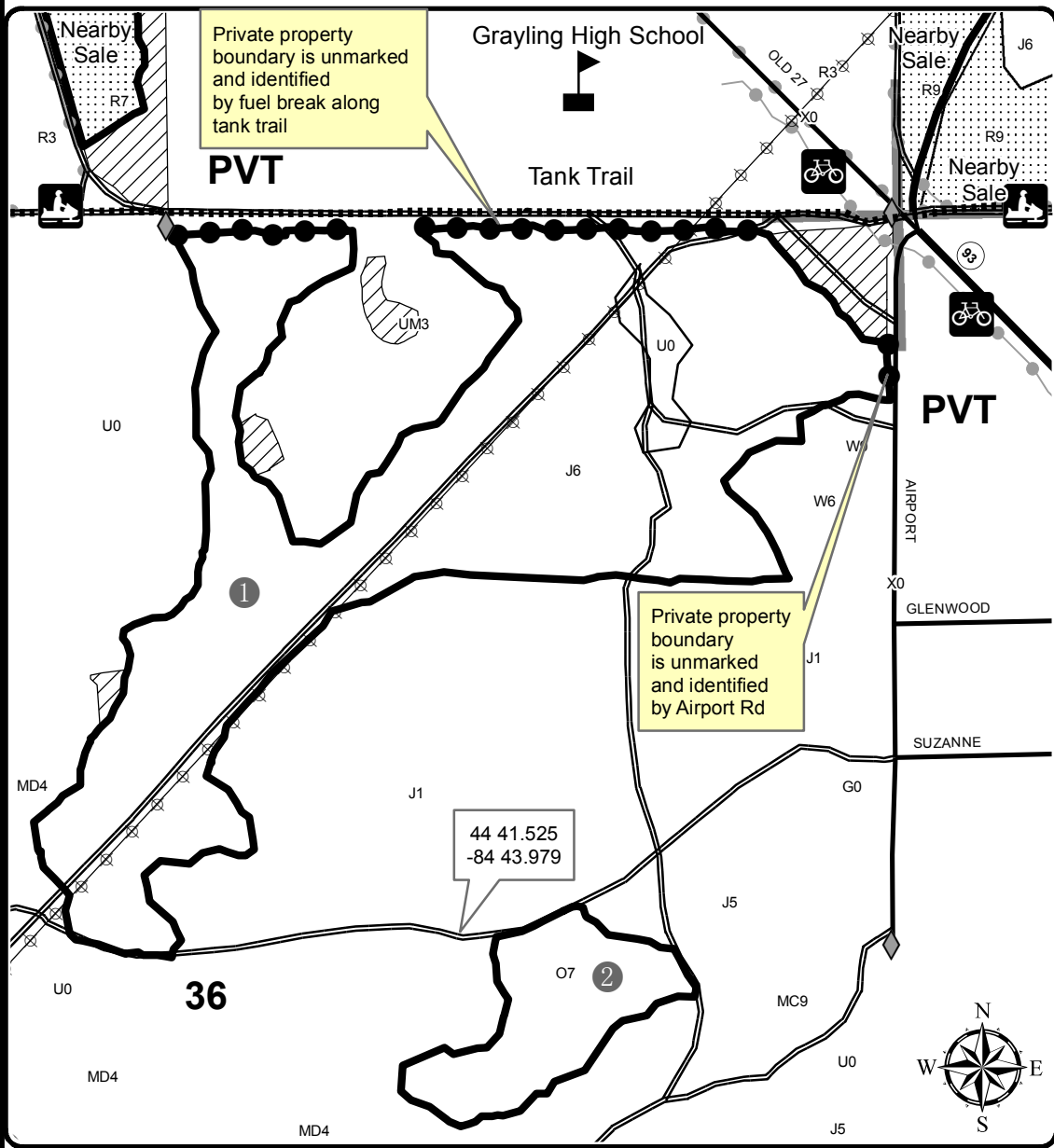
| PU | Acres |
|----|-------|
| 1 | 62.5 |
| 2 | 9.1 |

Couch Heavy Jack

Compartment 206

71.6 Acres

QR Code Opens Map in PDF Maps App



- Against State (Red)
- Private Line
- Retention Area (Red)
- Nearby Timber Sales
- Secondary Forest Road
- Paved Road
- Gravel Road
- Tank Trail
- Powerline
- Section Corners
- Recreational Trail
- Bike Trails
- Snowmobile Trails
- Field Grade Corners
- PU Label

Locator Map
1:200,000

