



TIMBER SALE MAP

This information provided by authority of Part 525, 1994 PA 451, as amended.

Forest Management Unit

County

Mapped By Matt Foster

Date

Page

of

Gaylord

Otsego

Cruised By UMLM

09/12/2022

2

3

Township

Range

Section(s) and Subdivision(s) Sec.23:SW; Sec.25:SWNW;
Sec.26:S1/2NE,SE; Sec. 35:NENW,S1/2NW,NWNE,SW

Scale

1:15,840

Cover Type

A = Aspen	H = Hemlock	N = Marsh	U = Upland Brush
B = Paper Birch	J = Jack Pine	O = Oak	UM = Upland Mixed
C = Cedar	L = Lowland Brush	P = Lowland Poplar	V = Bog or Marsh
D = Treed Bog	LM = Lowland Mixed	Q = Mixed Swamp Conifer	W = White Pine
E = Swamp Hdwoods	M = Mpl, Bch, Brch	R = Red Pine	X = Non Stocked
F = Spruce Fir	MC = Mixed Conifer	S = Black Spruce	Z = Water
G = Grass	MD = Mixed Deciduous	T = Tamarack	

Density

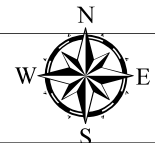
0 = Non Stocked	5 = Pole Timber Medium
1 = Seedling Sapling Poor	6 = Pole Timber Well
2 = Seedling Sapling Medium	7 = Saw Timber Poor
3 = Seedling Sapling Well	8 = Saw Timber Medium
4 = Pole Timber Poor	9 = Saw Timber Well

PU	Acres	PU	Acres
1	24.4	4	35.9
2	11.7	5	23.8
3	84.6		

Kolke Creek Red Pine

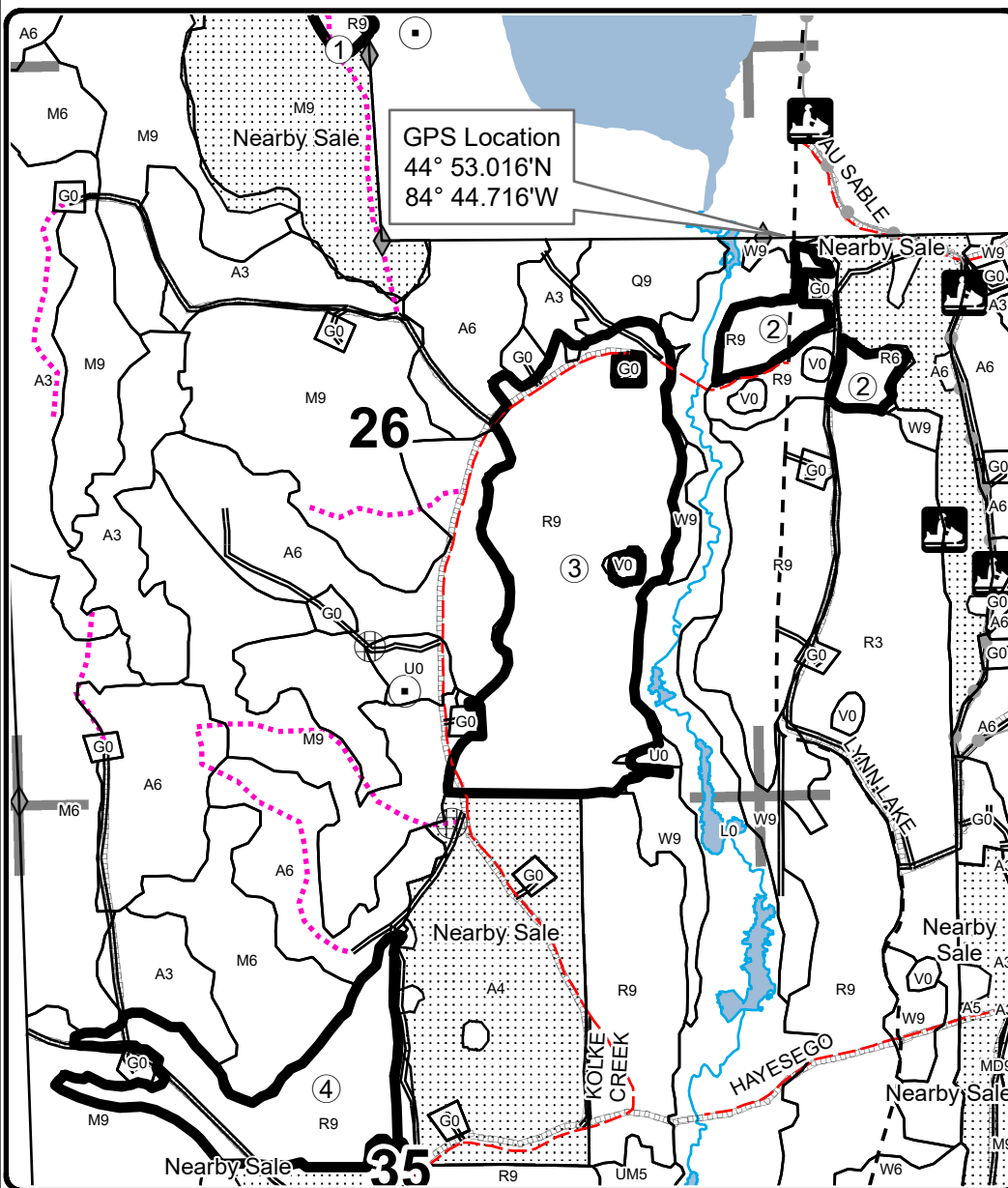
Compartment 21

180.4 Acres



Legend

- Sale Boundary (Red)
- Private Line (Blue)
- Stand Boundaries
- Nearby Timber Sales
- Recreational Trail
- Field Grade Corners
- Oil & Gas Well Surface Locations
- Secondary Forest Road
- Gravel Road
- County Road - Seasonal
- Temporary Management Access
- Perennial River
- Lakes and Rivers
- Section Corners
- Pipeline



Avenza Map

