

TIMBER SALE MAP

This information provided by authority of Part 525, 1994 PA 451, as amended.

Sale Number 52-009-24	Date 07/26/2024	
Scale 1:21,174	Page 1	Of 1

Forest Management Unit Gaylord Mgt Unit	County Charlevoix	Mapped By: Lachman
		Cruised By: Lachman/Tyran

Township 33N	Range 04W	Section(s) and Subdivision(s) Sec. 17 N1/2NE; Sec. 5 NWNE,S1/2NE,SE; Sec. 8 NE,SE;
------------------------	---------------------	---

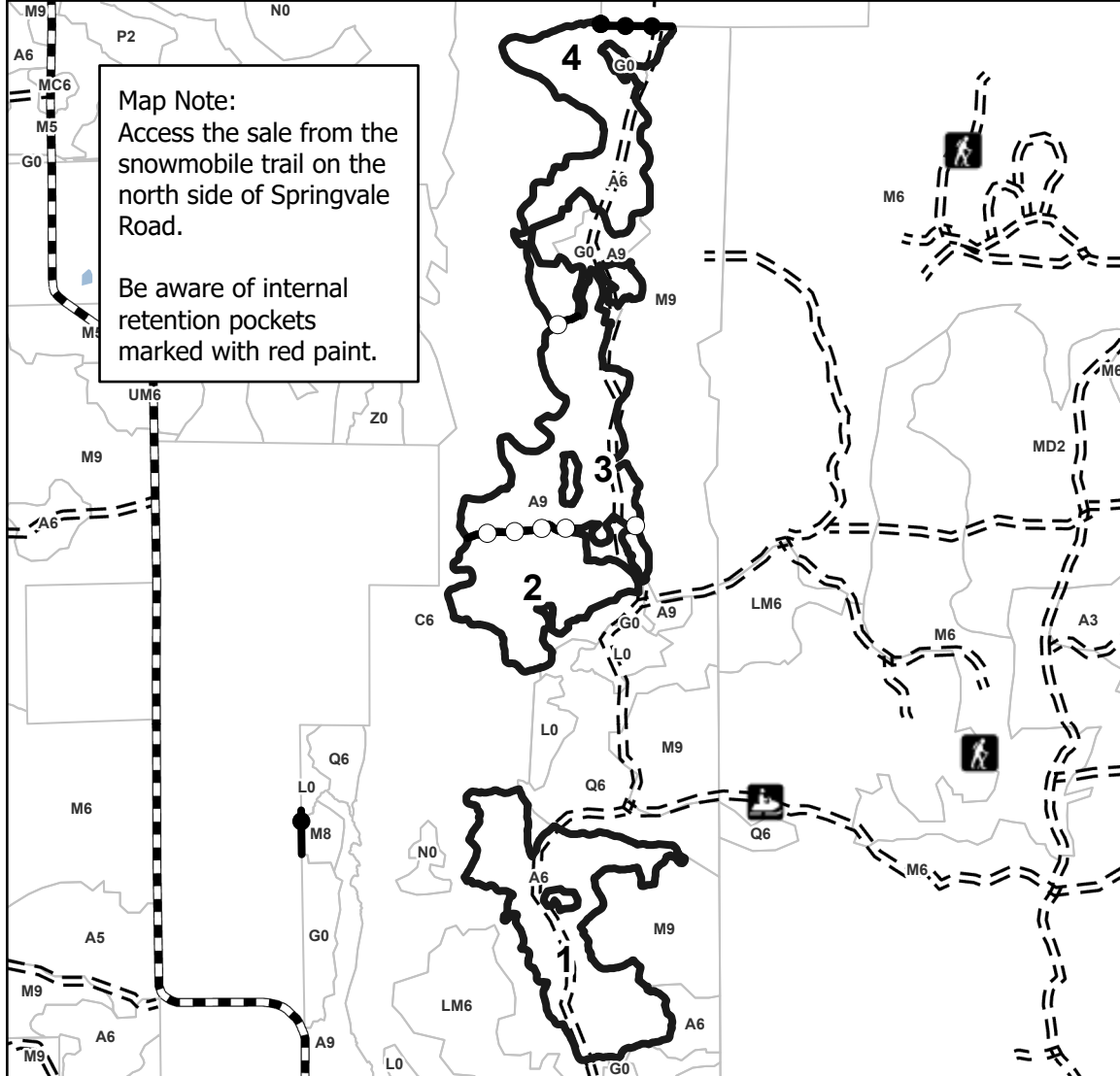
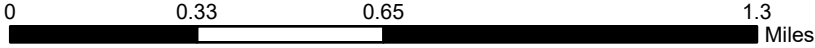
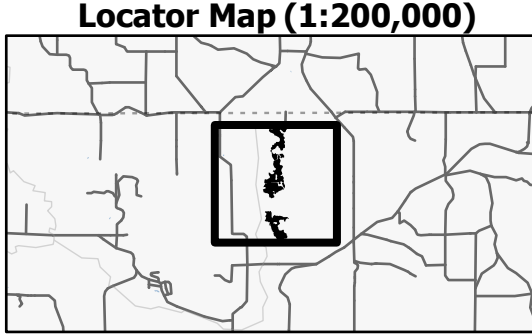
Cover Type			
A = Aspen	J = Jack Pine	O = Oak	U = Upland Brush
B = Paper Birch	K = Rock	P = Lowland Poplar	UM = Upland Mix Forest
C = Cedar	L = Lowland Brush	Q = Mixed Swamp Conifer	V = Bog or Marsh
D = Treed Bog	LM = Lowland Mix Forest	R = Red Pine	W = White Pine
E = Swamp Hardwoods	M = Maple, Beech, Birch	S = Black Spruce	X = Non Stocked
F = Spruce/Fir	MC = Mixed Conifer	T = Tamarack	Y = Sand
G = Grass	MD = Mixed Deciduous	Z = Water	
H = Hemlock	N = Marsh		

Density	
0 = Non Stocked	5 = Pole Timber Medium
1 = Seedling Sapling Poor	6 = Pole Timber Well
2 = Seedling Sapling Medium	7 = Saw Timber Poor
3 = Seedling Sapling Well	8 = Saw Timber Medium
4 = Pole Timber Poor	9 = Saw Timber Well

PU #	Acres
1	52.7
2	33.5
3	44.8
4	41.8

Waterstone Aspen

172.8 Acres



Map Note:
Access the sale from the snowmobile trail on the north side of Springvale Road.

Be aware of internal retention pockets marked with red paint.

- Legend**
- Against State (Red)
 - Stand
 - Payment Unit (Yellow)
 - Private Line (Blue)
 - Primary Forest Road
 - Forest Access Route
 - Administrative Access Only
 - Paved Road
 - Government Gravel/Dirt
 - Private Gravel/Dirt



Use QR Code to open Map in App

