



TIMBER SALE MAP

This information provided by authority of Part 525, 1994 PA 451, as amended.

Forest Management Unit Gaylord	County Charlevoix	Mapped By Doug Tyran	Date 08/30/2023	Page 2	of 2
Township 33N	Range 04W	Section(s) and Subdivision(s) 27: W1/2NW, 28: NW,NE,W1/2SW, 29: E1/2NE,NESE	Scale 1:15,840		

Cover Type

A = Aspen	H = Hemlock	N = Marsh	U = Upland Brush
B = Paper Birch	J = Jack Pine	O = Oak	UM = Upland Mixed
C = Cedar	L = Lowland Brush	P = Lowland Poplar	V = Bog or Marsh
D = Treed Bog	LM = Lowland Mixed	Q = Mixed Swamp Conifer	W = White Pine
E = Swamp Hdwoods	M = Mpl, Bch, Brch	R = Red Pine	X = Non Stocked
F = Spruce Fir	MC = Mixed Conifer	S = Black Spruce	Z = Water
G = Grass	MD = Mixed Deciduous	T = Tamarack	

Density

0 = Non Stocked	5 = Pole Timber Medium
1 = Seedling Sapling Poor	6 = Pole Timber Well
2 = Seedling Sapling Medium	7 = Saw Timber Poor
3 = Seedling Sapling Well	8 = Saw Timber Medium
4 = Pole Timber Poor	9 = Saw Timber Well

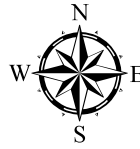
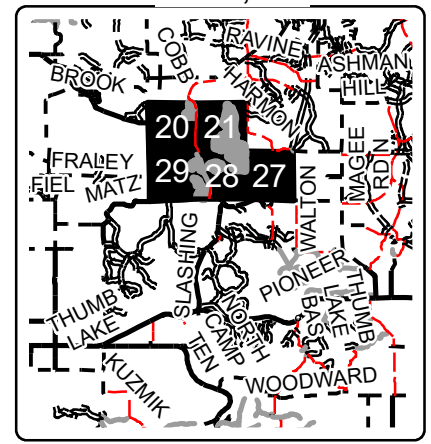
PU	Acres	PU	Acres
1	16.5	5	102.8
2	13.1	6	55.1
3	23.4	7	18.3
4	40.3		

Wooden Puzzle Pieces

Compartment 40
269.5 Acres

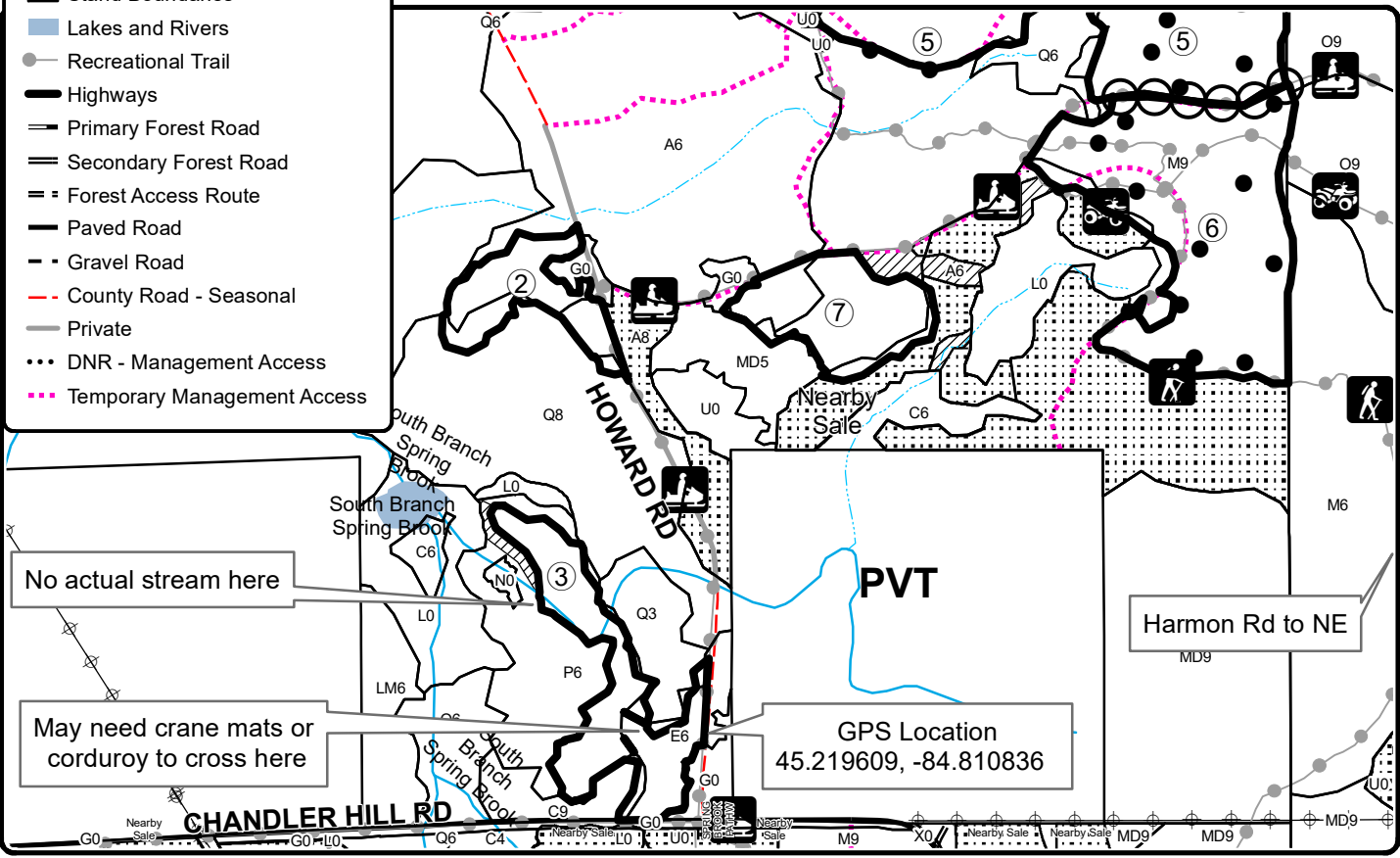
Locator Map

1:250,000



Legend

- Sale Boundary (Red)
- Payment Unit (Yellow)
- Regen Gaps (Green)
- Nearby Timber Sales
- Stand Boundaries
- Lakes and Rivers
- Recreational Trail
- Highways
- Primary Forest Road
- Secondary Forest Road
- Forest Access Route
- Paved Road
- Gravel Road
- County Road - Seasonal
- Private
- DNR - Management Access
- Temporary Management Access



No actual stream here

May need crane mats or corduroy to cross here

GPS Location
45.219609, -84.810836

Harmon Rd to NE

