



# TIMBER SALE MAP

This information provided by authority of Part 525, 1994 PA 451, as amended.

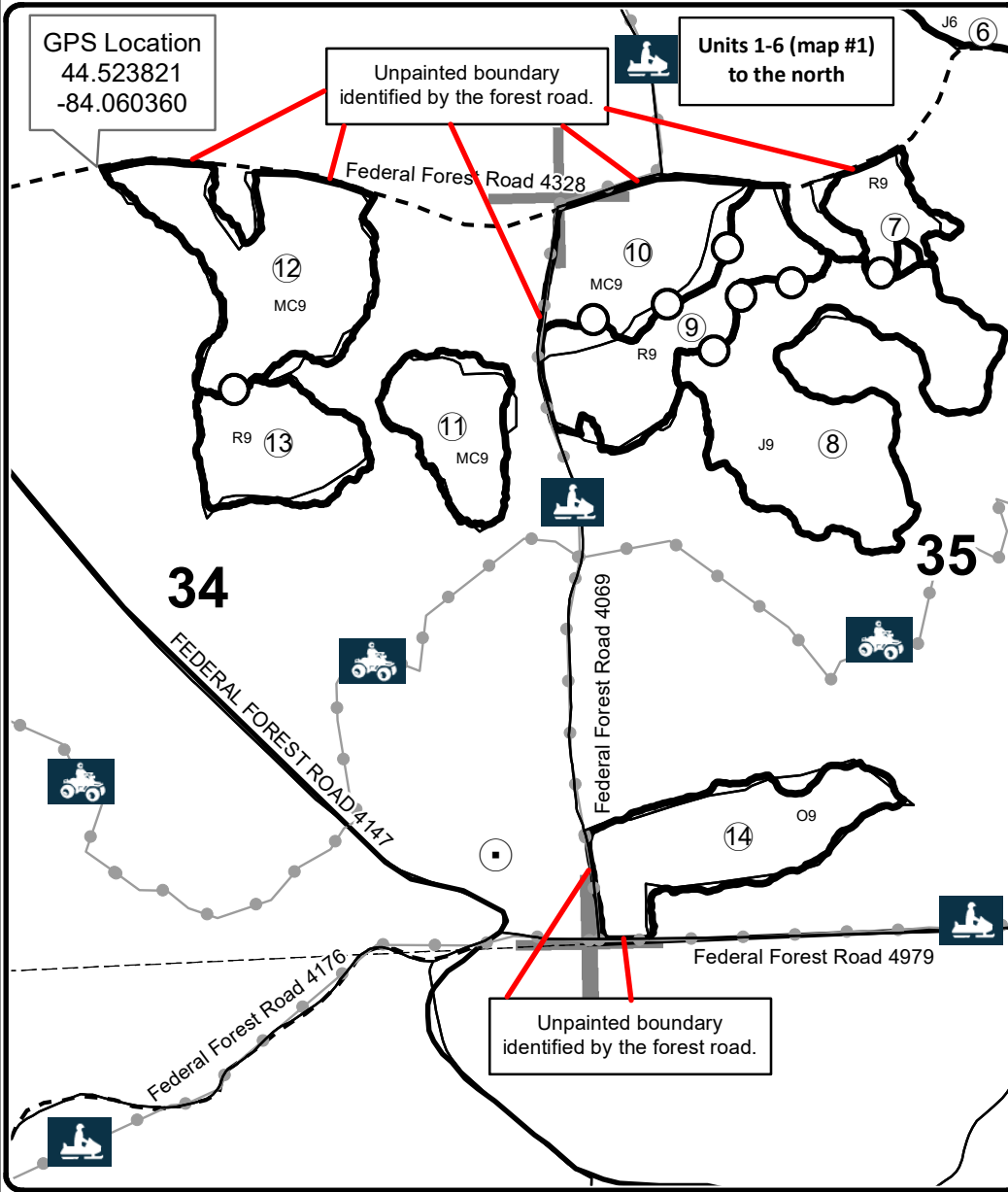
Forest Management Unit Grayling, GNA		County Oscoda	Mapped By Kubitsky	Date 8/26/2021	Page 2	of 2
Township 25N	Range 03E	Section(s) and Subdivision(s) Sec 25 W1/2NW, Sec27 NENE,SESW,SWSE, Sec. 34 NENW,NE, Sec. 35 NW,W1/2NE,S1/2SW			Scale 1:15,840	
Cover Type				Density		
A = Aspen	H = Hemlock	N = Marsh	U = Upland Brush	0 = Non Stocked	5 = Pole Timber Medium	
B = Paper Birch	J = Jack Pine	O = Oak	UM = Upland Mixed	1 = Seedling Sapling Poor	6 = Pole Timber Well	
C = Cedar	L = Lowland Brush	P = Lowland Poplar	V = Bog or Marsh	2 = Seedling Sapling Medium	7 = Saw Timber Poor	
D = Treed Bog	LM = Lowland Mixed	Q = Mixed Swamp Conifer	W = White Pine	3 = Seedling Sapling Well	8 = Saw Timber Medium	
E = Swamp Hdwoods	M = Mpl, Bch, Brch	R = Red Pine	X = Non Stocked	4 = Pole Timber Poor	9 = Saw Timber Well	
F = Spruce Fir	MC = Mixed Conifer	S = Black Spruce	Z = Water			
G = Grass	MD = Mixed Deciduous	T = Tamarack				

PU	Acres	PU	Acres
7	9.8	11	17.4
8	54.8	12	38.9
9	28.5	13	19.7
10	26.2	14	30.6

## GNA2 Deckerville North

### Compartment 7925197 & 7925198

#### 441.8 Acres



### Legend

- Sale Boundary (Orange)
- Payment Unit (Orange)
- Stand Boundaries
- Recreational Trail
- Oil & Gas Well Surface Locations
- Gravel Road
- - - Gravel Road
- Section Corners



Locator Map  
1:200,000

