



TIMBER SALE MAP

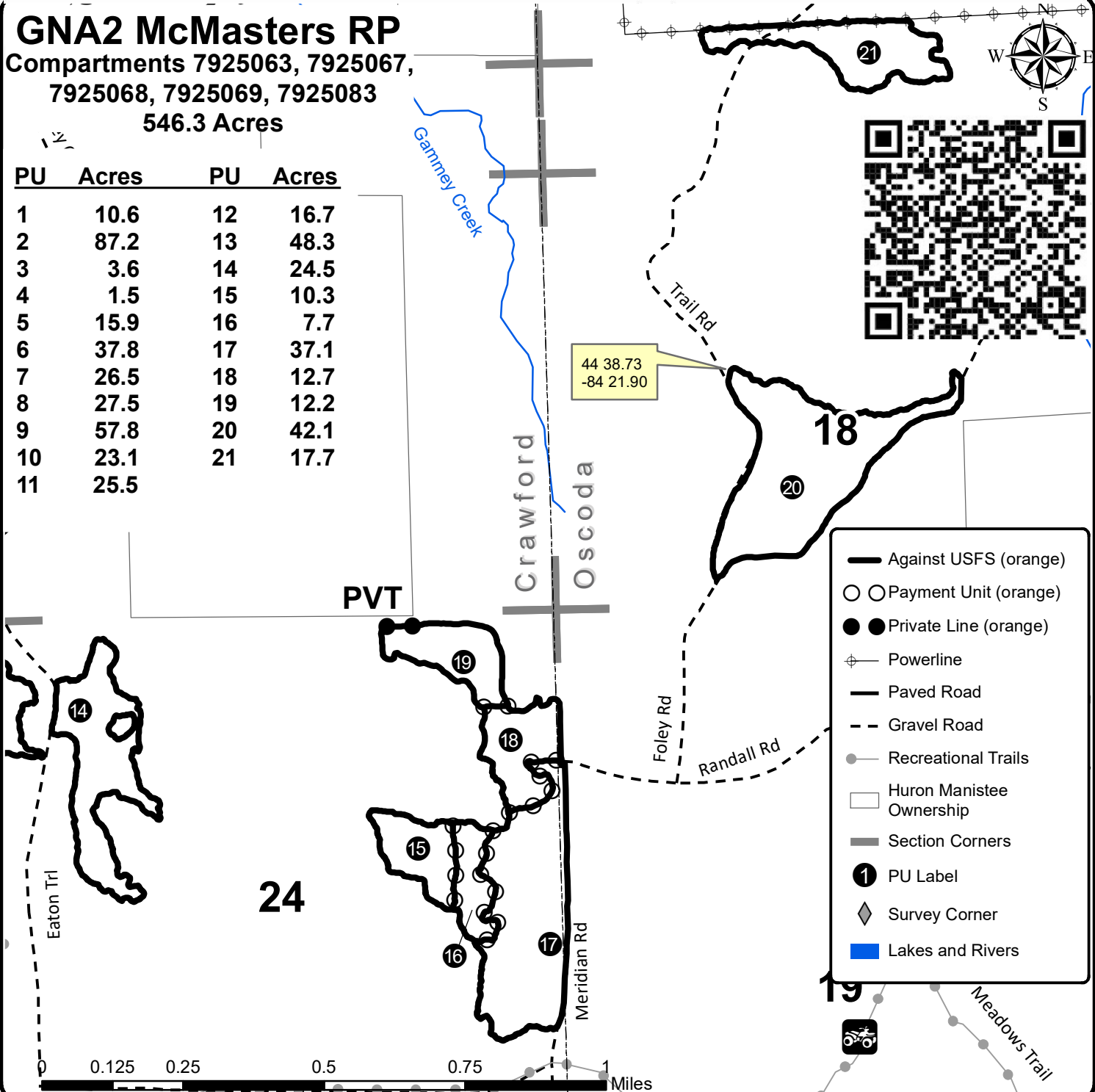
This information provided by authority of Part 525, 1994 PA 451, as amended.

Forest Management Unit Grayling		County Crawford/Oscoda	Mapped By Contractor (UMLMWS)	Date 07/13/2022	Page 2	of 2
Township 26N	Range 01E 01W	Section(s) and Subdivision(s) Sec 7, Sec 18, Sec 19 Sec 11, Sec 12, Sec 13, Sec 14, Sec 23, Sec 24		Scale 1:15,840		

Cover Type				Density	
A = Aspen	H = Hemlock	N = Marsh	U = Upland Brush	0 = Non Stocked	5 = Pole Timber Medium
B = Paper Birch	J = Jack Pine	O = Oak	UM = Upland Mixed	1 = Seedling Sapling Poor	6 = Pole Timber Well
C = Cedar	L = Lowland Brush	P = Lowland Poplar	V = Bog or Marsh	2 = Seedling Sapling Medium	7 = Saw Timber Poor
D = Treed Bog	LM = Lowland Mixed	Q = Mixed Swamp Conifer	W = White Pine	3 = Seedling Sapling Well	8 = Saw Timber Medium
E = Swamp Hdwoods	M = Mpl, Bch, Brch	R = Red Pine	X = Non Stocked	4 = Pole Timber Poor	9 = Saw Timber Well
F = Spruce Fir	MC = Mixed Conifer	S = Black Spruce	Z = Water		
G = Grass	MD = Mixed Deciduous	T = Tamarack			

GNA2 McMasters RP
 Compartments 7925063, 7925067,
 7925068, 7925069, 7925083
 546.3 Acres

PU	Acres	PU	Acres
1	10.6	12	16.7
2	87.2	13	48.3
3	3.6	14	24.5
4	1.5	15	10.3
5	15.9	16	7.7
6	37.8	17	37.1
7	26.5	18	12.7
8	27.5	19	12.2
9	57.8	20	42.1
10	23.1	21	17.7
11	25.5		



- Against USFS (orange)
- Payment Unit (orange)
- Private Line (orange)
- Powerline
- Paved Road
- Gravel Road
- Recreational Trails
- Huron Manistee Ownership
- Section Corners
- PU Label
- Survey Corner
- Lakes and Rivers

