



# TIMBER SALE MAP

This information provided by authority of Part 525, 1994 PA 451, as amended.

Forest Management Unit <b>Gwinn</b>		County <b>Marquette</b>	Mapped By <b>Rick Hill</b>	Date <b>5/11/2020</b>	Page <b>1</b>	of <b>1</b>
Township <b>46N</b>	Range <b>28W</b>	Section(s) and Subdivision(s) <b>Sections 29, 32, 33</b>		Scale <b>1:15,840</b>		

### Cover Type

A = Aspen	H = Hemlock	N = Marsh	U = Upland Brush
B = Paper Birch	J = Jack Pine	O = Oak	UM = Upland Mixed
C = Cedar	L = Lowland Brush	P = Lowland Poplar	V = Bog or Marsh
D = Treed Bog	LM = Lowland Mixed	Q = Mixed Swamp Conifer	W = White Pine
E = Swamp Hdwoods	M = Mpl, Bch, Brch	R = Red Pine	X = Non Stocked
F = Spruce Fir	MC = Mixed Conifer	S = Black Spruce	Z = Water
G = Grass	MD = Mixed Deciduous	T = Tamarack	

### Density

0 = Non Stocked	5 = Pole Timber Medium
1 = Seedling Sapling Poor	6 = Pole Timber Well
2 = Seedling Sapling Medium	7 = Saw Timber Poor
3 = Seedling Sapling Well	8 = Saw Timber Medium
4 = Pole Timber Poor	9 = Saw Timber Well

### PU Acres

<b>1</b>	<b>65.3</b>
<b>2</b>	<b>8.9</b>



## Quarantine Conifer

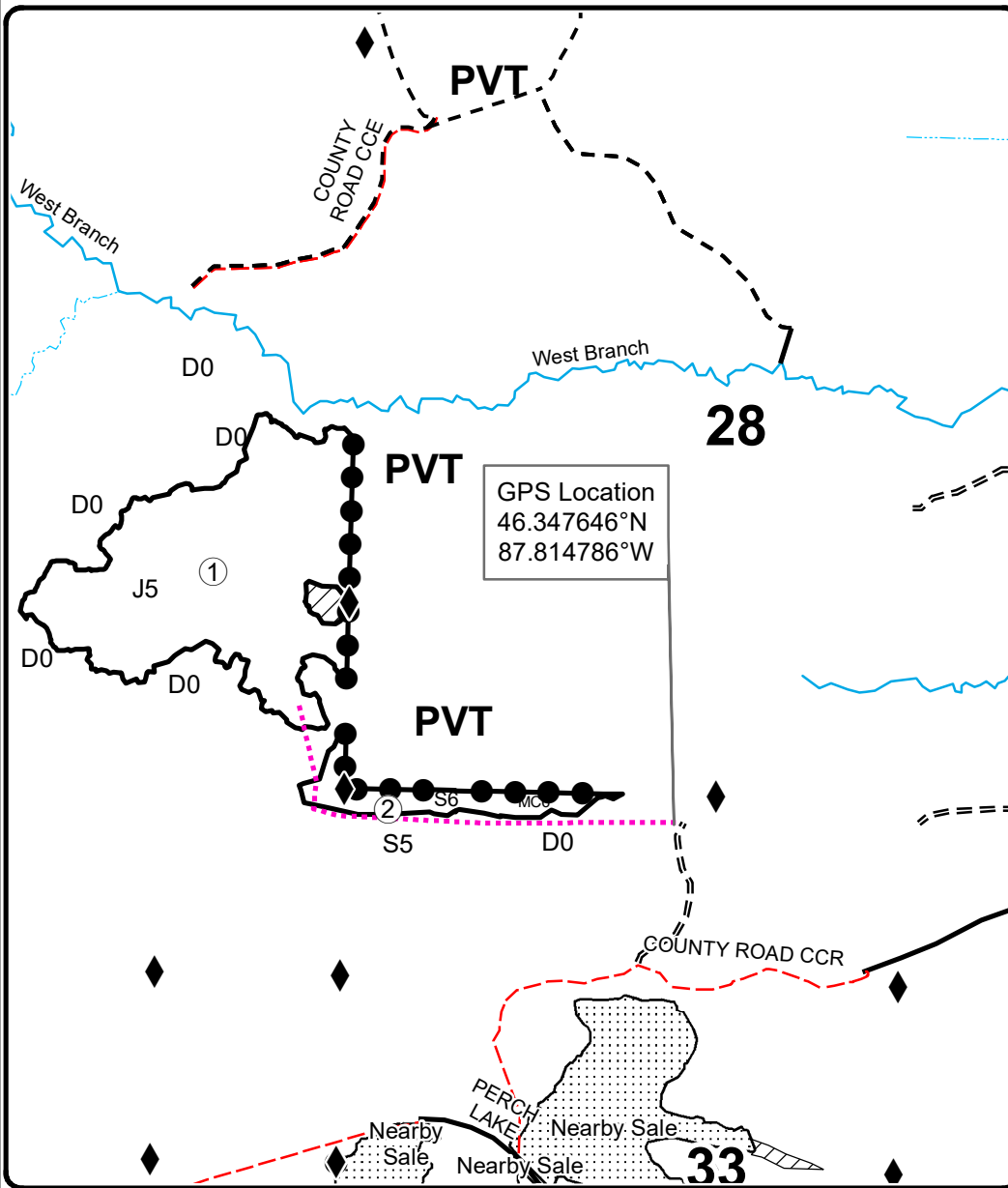
### Compartment 227

74.2 Acres

### Legend

- - - Temporary Management Access
- Forest Access Route
- Paved Road
- Gravel Road
- County Road - Seasonal
- ◆ Survey Corners
- Intermittent Stream
- Perennial River
- Retention Area
- Against State (Red)
- Private Line (Blue)
- Nearby Timber Sales

QR Code For PDF Maps



Locator Map  
1:200,000

