



TIMBER SALE MAP

This information provided by authority of Part 525, 1994 PA 451, as amended.

Forest Management Unit Gwinn FMU		County Marquette	Mapped By Rick Hill	Date 10/11/2021	Page 2	of 2
Township 45N	Range 25W	Section(s) and Subdivision(s) Section 32, 34		Scale 1:15,840		
Cover Type				Density		
A = Aspen	H = Hemlock	N = Marsh	U = Upland Brush	0 = Non Stocked	5 = Pole Timber Medium	
B = Paper Birch	J = Jack Pine	O = Oak	UM = Upland Mixed	1 = Seedling Sapling Poor	6 = Pole Timber Well	
C = Cedar	L = Lowland Brush	P = Lowland Poplar	V = Bog or Marsh	2 = Seedling Sapling Medium	7 = Saw Timber Poor	
D = Treed Bog	LM = Lowland Mixed	Q = Mixed Swamp Conifer	W = White Pine	3 = Seedling Sapling Well	8 = Saw Timber Medium	
E = Swamp Hdwoods	M = Mpl, Bch, Brch	R = Red Pine	X = Non Stocked	4 = Pole Timber Poor	9 = Saw Timber Well	
F = Spruce Fir	MC = Mixed Conifer	S = Black Spruce	Z = Water			
G = Grass	MD = Mixed Deciduous	T = Tamarack				

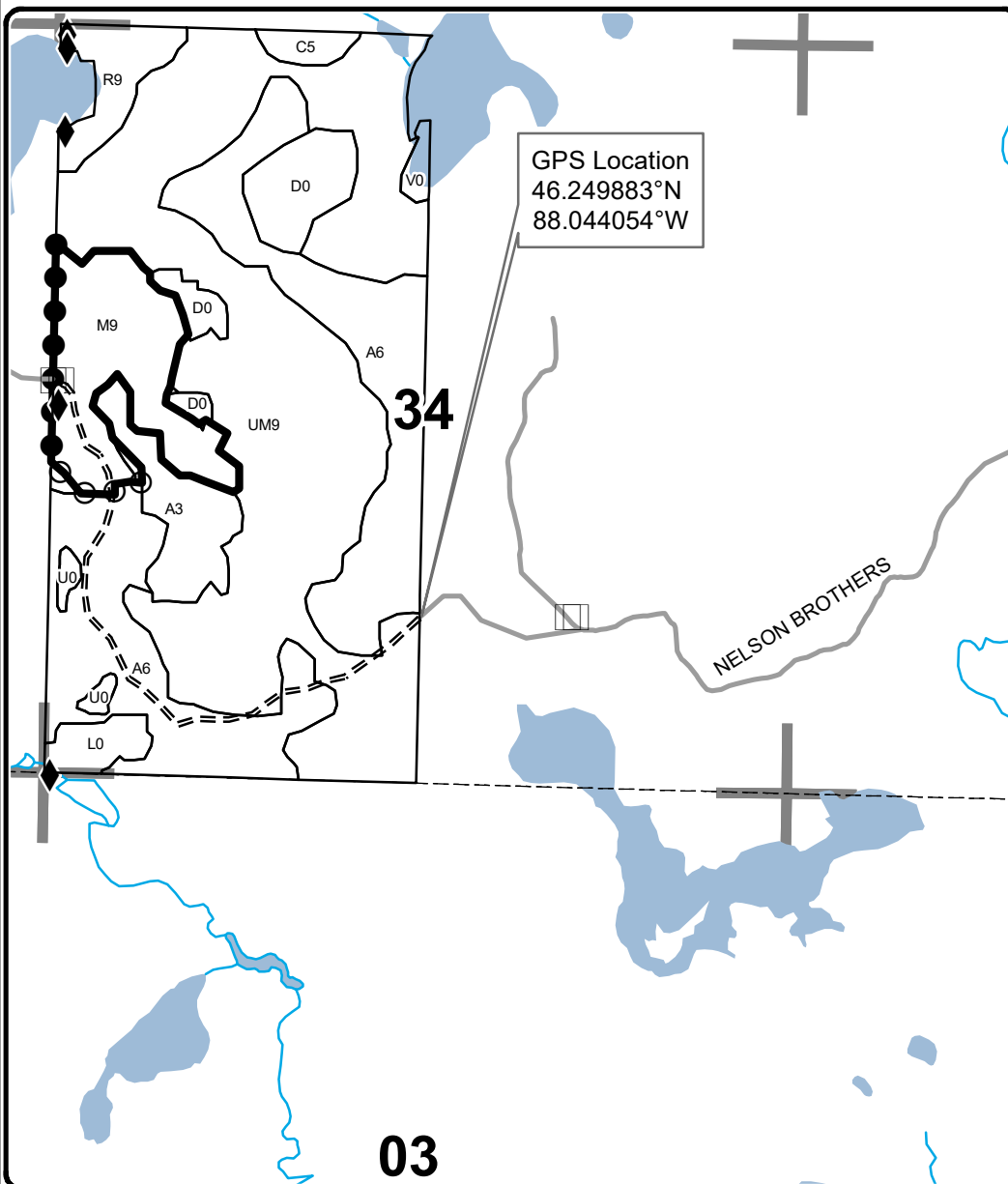
PU Acres

- 1 39.4
- 2 31.9



Haris-Lotto Contract Hrdwd

Compartment 246
71.3 Acres



Legend

- Stand Boundaries
- ◆ Survey Corners
- == Forest Access Route
- Private
- Perennial River
- Lakes and Rivers
- Against State (Red)
- ○ Payment Unit (Yellow)
- ● Private Line (Blue)
- Section Corners

PDF Map QR Code

Locator Map QR Code

