



TIMBER SALE MAP

This information provided by authority of Part 525, 1994 PA 451, as amended.

Forest Management Unit Gwinn FMU		County Marquette	Mapped By Rick Hill	Date 9/17/2021	Page 1	of 1
Township 45N	Range 17W	Section(s) and Subdivision(s) Sections 8, 17, 20		Scale 1:15,840		
Cover Type				Density		
A = Aspen	H = Hemlock	N = Marsh	U = Upland Brush	0 = Non Stocked	5 = Pole Timber Medium	
B = Paper Birch	J = Jack Pine	O = Oak	UM = Upland Mixed	1 = Seedling Sapling Poor	6 = Pole Timber Well	
C = Cedar	L = Lowland Brush	P = Lowland Poplar	V = Bog or Marsh	2 = Seedling Sapling Medium	7 = Saw Timber Poor	
D = Treed Bog	LM = Lowland Mixed	Q = Mixed Swamp Conifer	W = White Pine	3 = Seedling Sapling Well	8 = Saw Timber Medium	
E = Swamp Hdwoods	M = Mpl, Bch, Brch	R = Red Pine	X = Non Stocked	4 = Pole Timber Poor	9 = Saw Timber Well	
F = Spruce Fir	MC = Mixed Conifer	S = Black Spruce	Z = Water			
G = Grass	MD = Mixed Deciduous	T = Tamarack				

PU	Acres	PU	Acres
1	17.3	4	7.6
2	12.9	5	12.5
3	17.8		

Moose Mix

Compartment 231
68.1 Acres

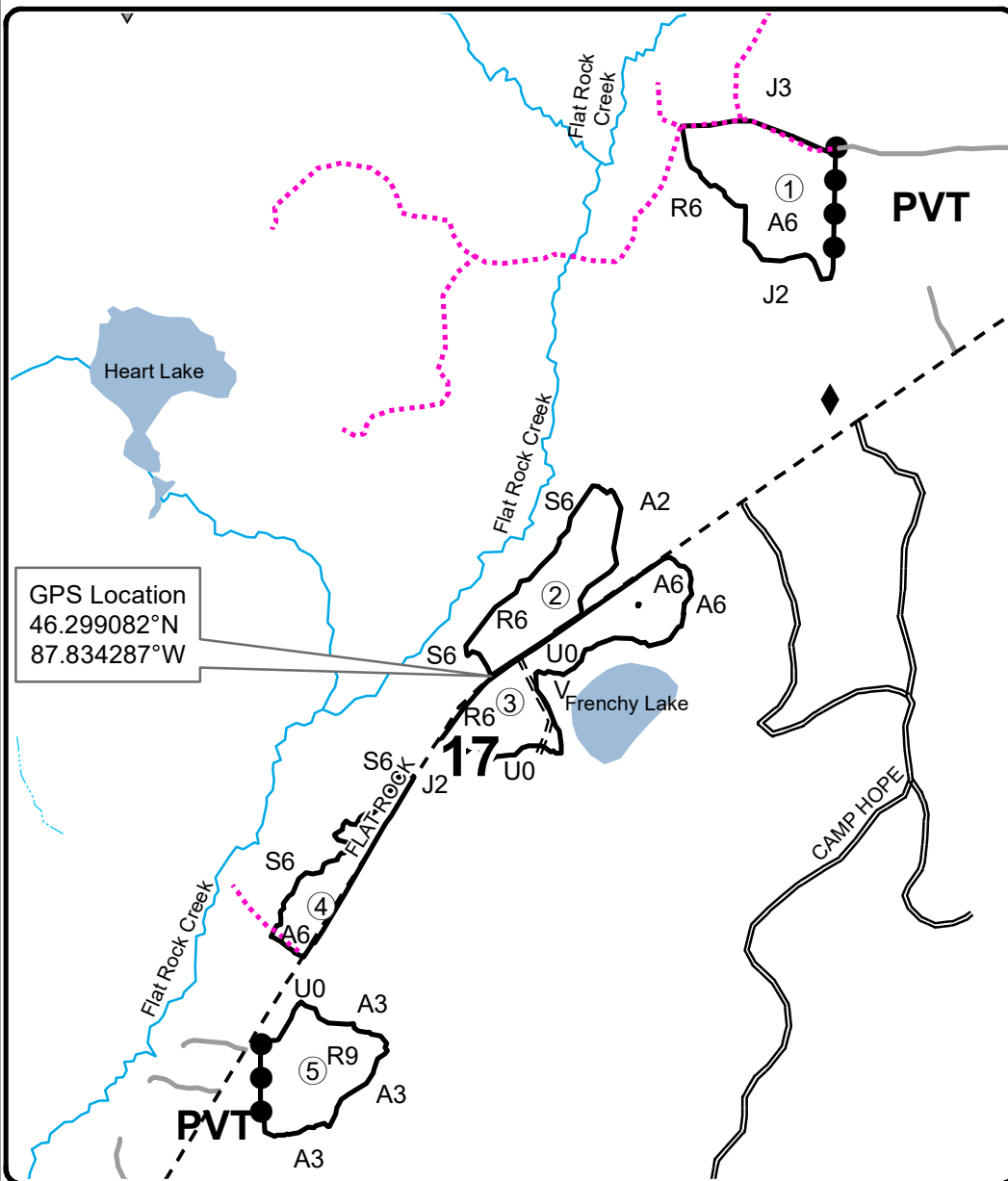
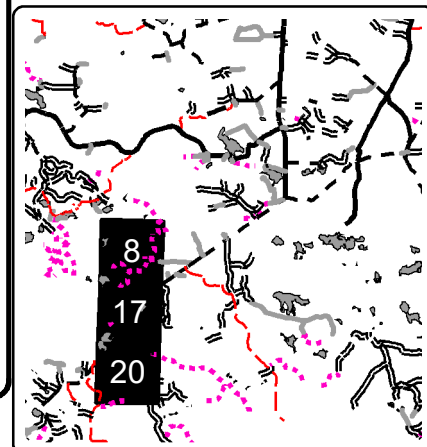


Legend

- == Forest Access Route
- ◆ Survey Corners
- ◇ Field Grade Corners
- == Secondary Forest Road
- - Gravel Road
- Private
- ⋯ Temporary Management Access
- ⋯ Intermittent Stream
- Perennial River
- Lakes and Rivers
- Private Line (Blue)

QR Code for PDF Map

Locator Map
1:200,000



GPS Location
46.299082°N
87.834287°W

