



# TIMBER SALE MAP

This information provided by authority of Part 525, 1994 PA 451, as amended.

Forest Management Unit Gaylord		County Cheboygan	Mapped By TSP	Date 09/21/2021	Page 1	of 1
Township 35N	Range 02W	Section(s) and Subdivision(s) 31: NW, NE, SESW, N1/2SE, SESE		Scale 1:15,840		

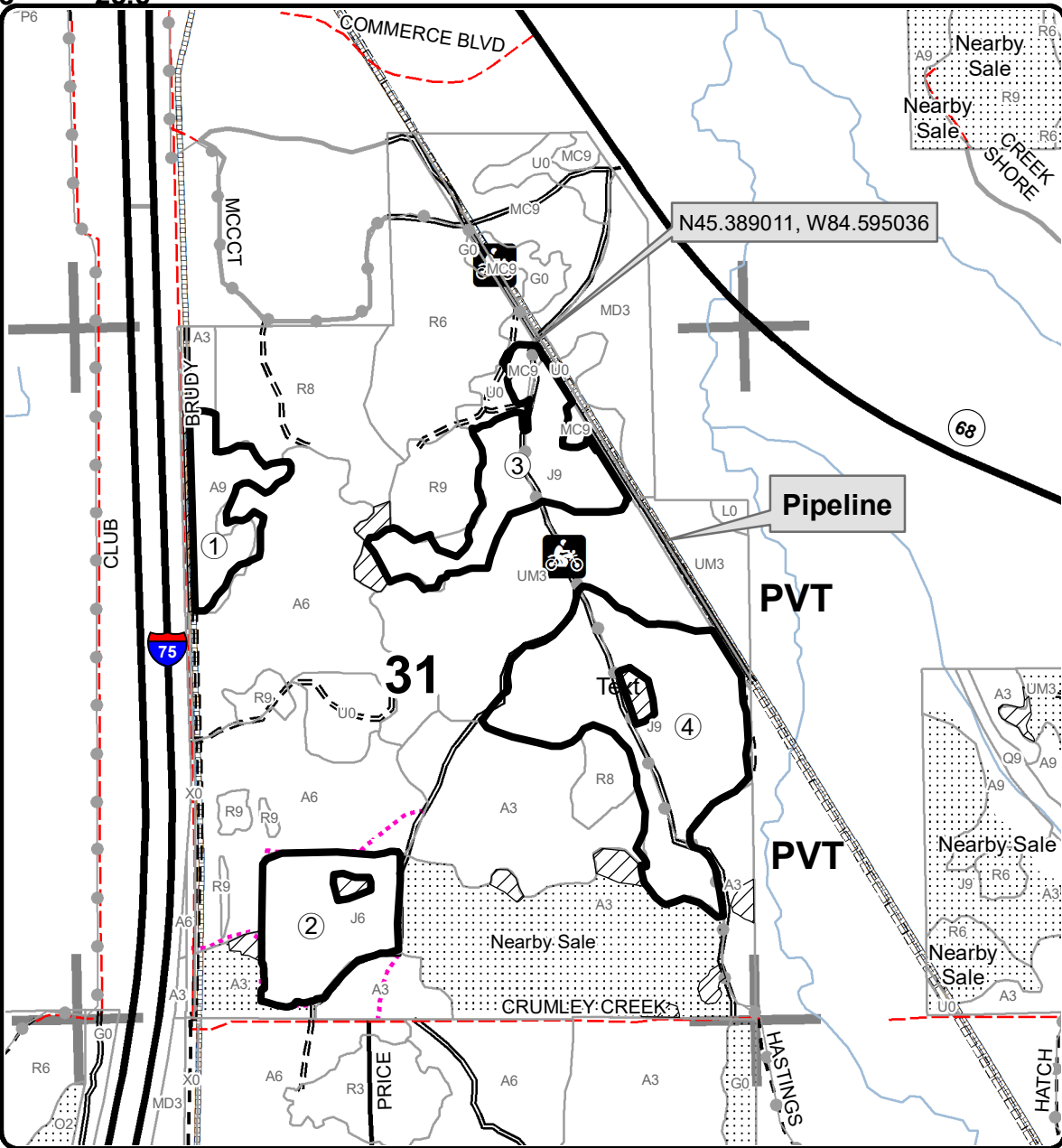
Cover Type				Density	
A = Aspen	H = Hemlock	N = Marsh	U = Upland Brush	0 = Non Stocked	5 = Pole Timber Medium
B = Paper Birch	J = Jack Pine	O = Oak	UM = Upland Mixed	1 = Seedling Sapling Poor	6 = Pole Timber Well
C = Cedar	L = Lowland Brush	P = Lowland Poplar	V = Bog or Marsh	2 = Seedling Sapling Medium	7 = Saw Timber Poor
D = Treed Bog	LM = Lowland Mixed	Q = Mixed Swamp Conifer	W = White Pine	3 = Seedling Sapling Well	8 = Saw Timber Medium
E = Swamp Hdwoods	M = Mpl, Bch, Brch	R = Red Pine	X = Non Stocked	4 = Pole Timber Poor	9 = Saw Timber Well
F = Spruce Fir	MC = Mixed Conifer	S = Black Spruce	Z = Water		
G = Grass	MD = Mixed Deciduous	T = Tamarack			

PU	Acres	PU	Acres
1	13.1	4	52.1
2	22.4		
3	25.6		

## Brudy Road Mix

### Compartment 168

#### 113.2 Acres



### Legend

- Against State (Red)
- ▨ Retention Area
- ⋯ Nearby Timber Sale
- Stand Boundaries
- Recreational Trails
- Highway
- Secondary Forest Road
- == Forest Access Route
- Paved Road
- - Gravel Road
- - County Road - Seasonal
- Private Road
- ⋯ Temporary Management Access
- Pipeline
- Section Corners

