



# TIMBER SALE MAP

This information provided by authority of Part 525, 1994 PA 451, as amended.

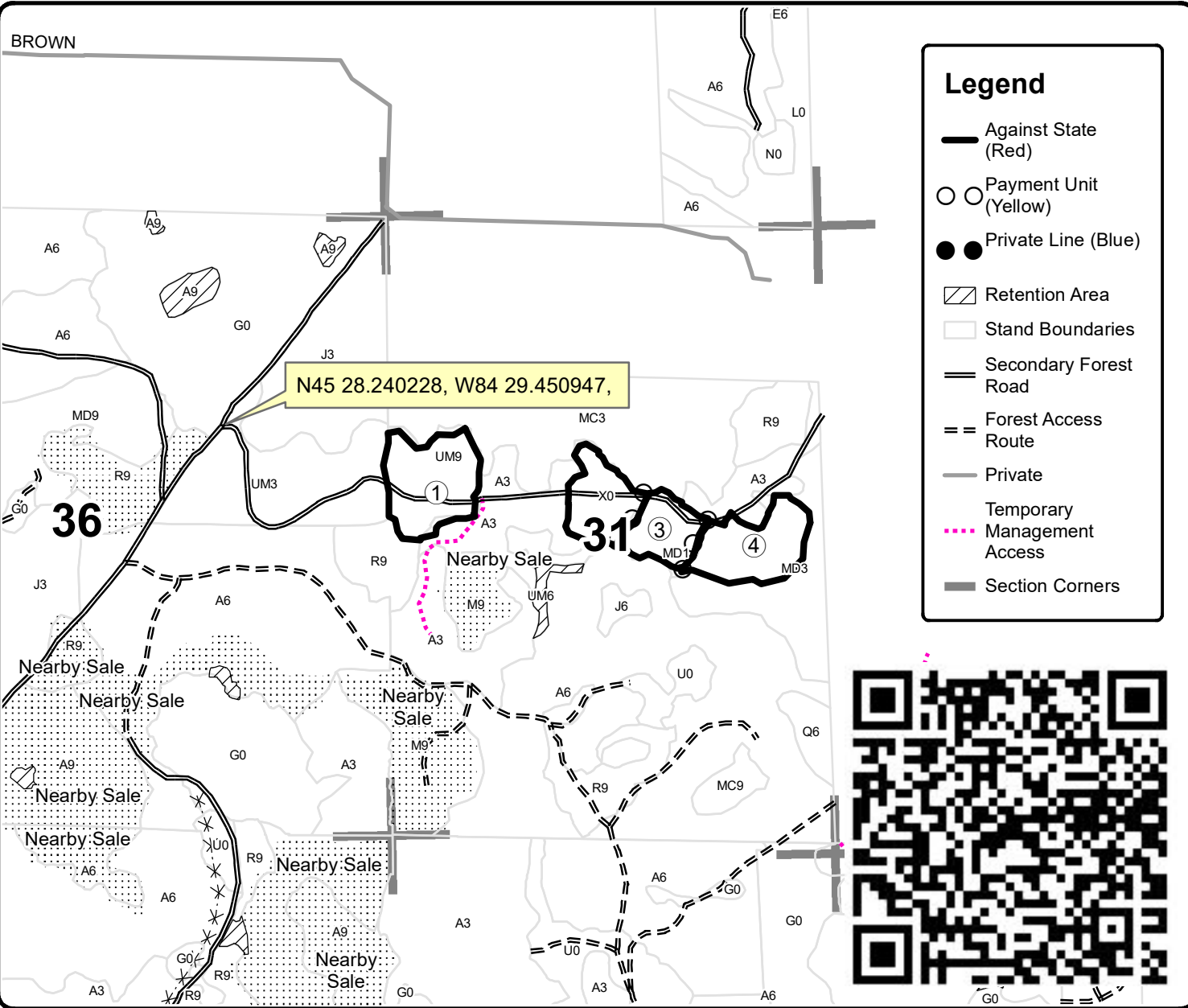
Forest Management Unit <b>Gaylord Management Unit</b>		County <b>Cheboygan</b>	Mapped By <b>John Scheele</b>	Date <b>09/23/2021</b>	Page 1 of <b>1</b>	
Township <b>36N</b>	Range <b>02W</b>	Section(s) and Subdivision(s) <b>Section 31 SENW, S1/2 NE, NESW, N1/2 SE</b>			Scale <b>1:15,840</b>	
<b>Cover Type</b>			<b>Density</b>			
A = Aspen	H = Hemlock	N = Marsh	U = Upland Brush	0 = Non Stocked	5 = Pole Timber Medium	
B = Paper Birch	J = Jack Pine	O = Oak	UM = Upland Mixed	1 = Seedling Sapling Poor	6 = Pole Timber Well	
C = Cedar	L = Lowland Brush	P = Lowland Poplar	V = Bog or Marsh	2 = Seedling Sapling Medium	7 = Saw Timber Poor	
D = Treed Bog	LM = Lowland Mixed	Q = Mixed Swamp Conifer	W = White Pine	3 = Seedling Sapling Well	8 = Saw Timber Medium	
E = Swamp Hdwoods	M = Mpl, Bch, Brch	R = Red Pine	X = Non Stocked	4 = Pole Timber Poor	9 = Saw Timber Well	
F = Spruce Fir	MC = Mixed Conifer	S = Black Spruce	Z = Water			
G = Grass	MD = Mixed Deciduous	T = Tamarack				

PU	Acres	PU	Acres
1	13.6	4	11.5
2	8.4		
3	6.9		

## Low Volume Pine Mix

### Compartment 179

#### 40.4 Acres



### Legend

- Against State (Red)
- ○ Payment Unit (Yellow)
- ● Private Line (Blue)
- ▨ Retention Area
- Stand Boundaries
- == Secondary Forest Road
- == Forest Access Route
- Private
- Temporary Management Access
- Section Corners

