



TIMBER SALE MAP

This information provided by authority of Part 525, 1994 PA 451, as amended.

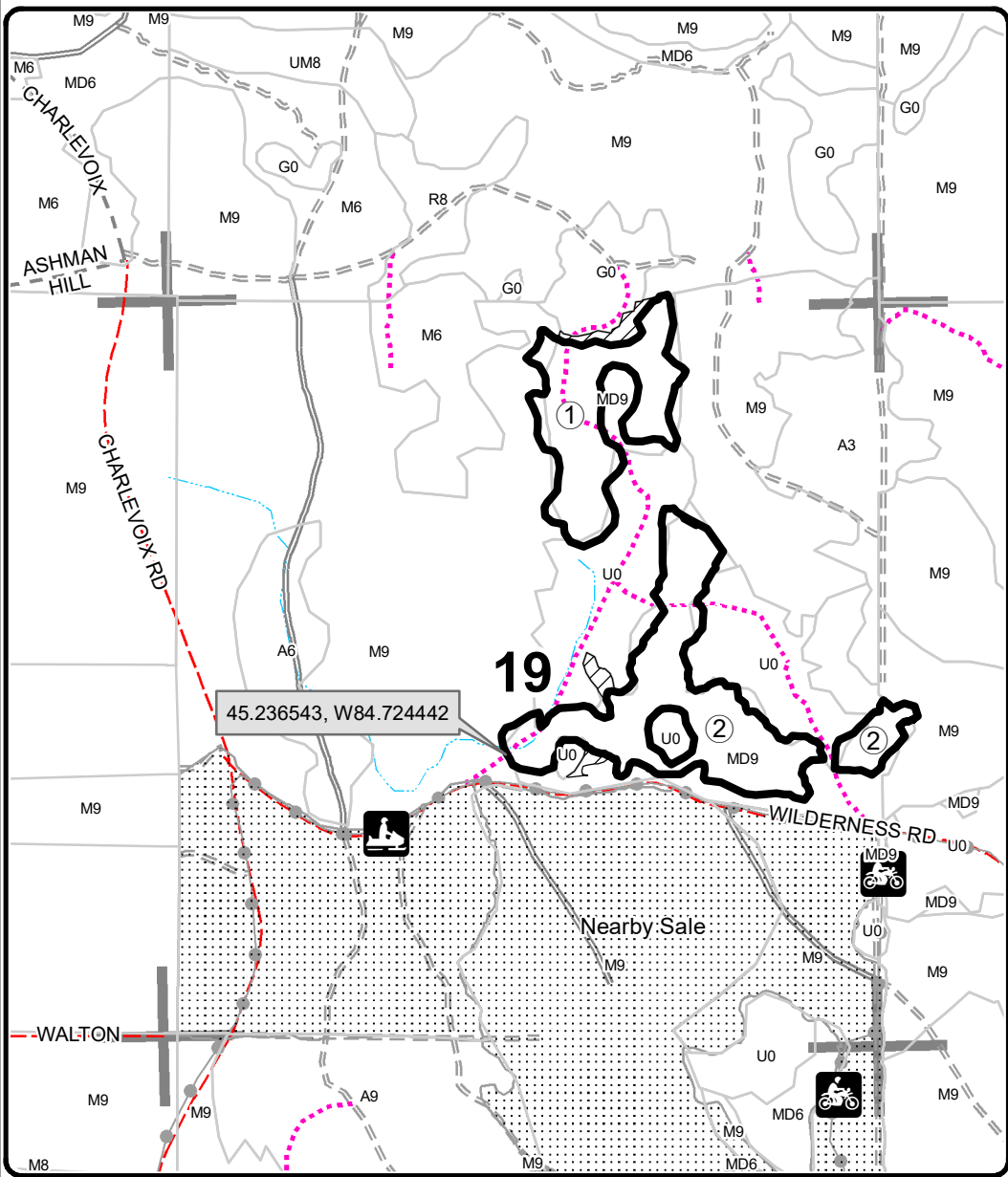
Forest Management Unit Gaylord		County Cheboygan	Mapped By TSP	Date 08/25/2022	Page 1	of 2
Township 33N	Range 03W	Section(s) and Subdivision(s) 18: SWSE; 19: NWNE, S1/2NE, NESW, N1/2SE; 20: NWSW; 30: E1/2NW, SWNE, E1/2SW, NWSE; 31: N1/2NW, SWNW		Scale 1:15,840		
Cover Type				Density		
A = Aspen	H = Hemlock	N = Marsh	U = Upland Brush	0 = Non Stocked	5 = Pole Timber Medium	
B = Paper Birch	J = Jack Pine	O = Oak	UM = Upland Mixed	1 = Seedling Sapling Poor	6 = Pole Timber Well	
C = Cedar	L = Lowland Brush	P = Lowland Poplar	V = Bog or Marsh	2 = Seedling Sapling Medium	7 = Saw Timber Poor	
D = Treed Bog	LM = Lowland Mixed	Q = Mixed Swamp Conifer	W = White Pine	3 = Seedling Sapling Well	8 = Saw Timber Medium	
E = Swamp Hdwoods	M = Mpl, Bch, Brch	R = Red Pine	X = Non Stocked	4 = Pole Timber Poor	9 = Saw Timber Well	
F = Spruce Fir	MC = Mixed Conifer	S = Black Spruce	Z = Water			
G = Grass	MD = Mixed Deciduous	T = Tamarack				

PU	Acres	PU	Acres
1	22.1	4	17.5
2	35.9		
3	29.6		

Hades Mix

Compartment 146

105.1 Acres



Legend

- Against State (Red)
- Retention Area
- Stand Boundaries
- Nearby Timber Sales
- Recreational Trail
- Secondary Forest Road
- Forest Access Route
- Paved Road
- Gravel Road
- County Road - Seasonal
- Temporary Management Access
- Intermittent Stream
- Section Corners

Locator Map
1:200,000

