



TIMBER SALE MAP

This information provided by authority of Part 525, 1994 PA 451, as amended.

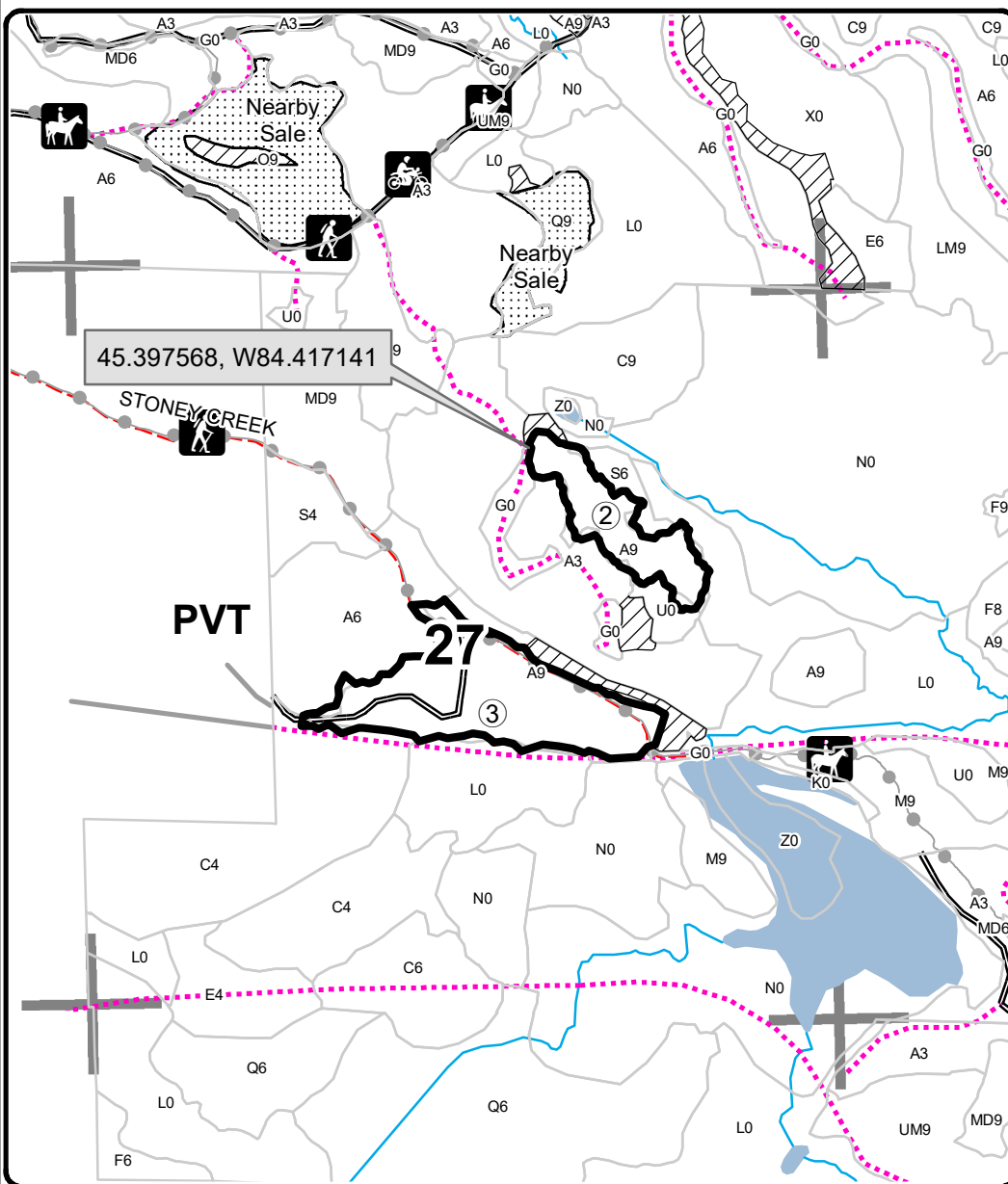
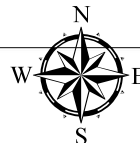
Forest Management Unit Gaylord		County Cheboygan	Mapped By TSP	Date 09/29/2022	Page 2	of 2
Township 35N	Range 01W	Section(s) and Subdivision(s) 26: NESW, NWSE, S1/2SE; 27: SENW, NWNE, S1/2NE, NESW, N1/2SE; 35: NENE			Scale 1:15,840	
Cover Type				Density		
A = Aspen	H = Hemlock	N = Marsh	U = Upland Brush	0 = Non Stocked	5 = Pole Timber Medium	
B = Paper Birch	J = Jack Pine	O = Oak	UM = Upland Mixed	1 = Seedling Sapling Poor	6 = Pole Timber Well	
C = Cedar	L = Lowland Brush	P = Lowland Poplar	V = Bog or Marsh	2 = Seedling Sapling Medium	7 = Saw Timber Poor	
D = Treed Bog	LM = Lowland Mixed	Q = Mixed Swamp Conifer	W = White Pine	3 = Seedling Sapling Well	8 = Saw Timber Medium	
E = Swamp Hdwoods	M = Mpl, Bch, Brch	R = Red Pine	X = Non Stocked	4 = Pole Timber Poor	9 = Saw Timber Well	
F = Spruce Fir	MC = Mixed Conifer	S = Black Spruce	Z = Water			
G = Grass	MD = Mixed Deciduous	T = Tamarack				

PU	Acres
1	31.4
2	12.4
3	30.2

Spread Out Aspen Mix

Compartment 185

74 Acres



Legend

- Against State (Red)
- Retention Area
- Stand Boundaries
- Recreational Trail
- Secondary Forest Road
- County Road - Seasonal
- Private
- Temporary Management Access
- Perennial River
- Lakes and Rivers
- Nearby Timber Sales
- Section Corners

Locator Map

1:200,000

