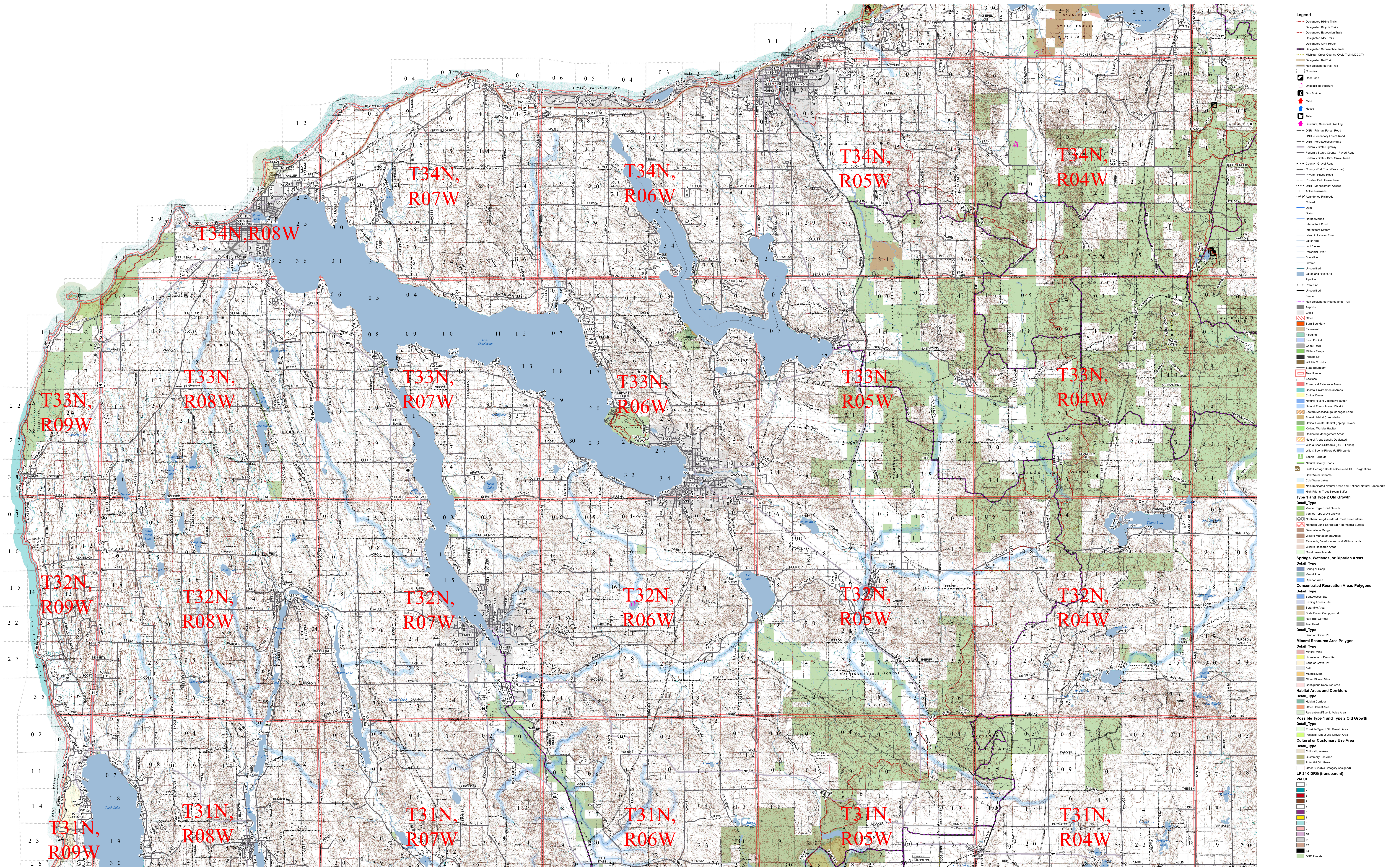


# Charlevoix County

## DNR Ownership - Terrain - Legal - SCA's - HCVA's



0 1 2 4 6 8 Miles

1 in = 1 miles

Author: S. Thompson April 2020



- Legend**
- Designated Hiking Trails
  - Designated Bicycle Trails
  - Designated Equestrian Trails
  - Designated ATV Trails
  - Designated OHV Routes
  - Designated Snowmobile Trails
  - Michigan Cross County Cycle Trail (MCCCT)
  - Designated Rail Trail
  - Non-Designated Rail Trail
  - Counties
  - Clear Block
  - Unspecified Structure
  - Gas Station
  - Gas Station
  - House
  - Structure, Seasonal Dwelling
  - DNR - Primary Forest Road
  - DNR - Secondary Forest Road
  - DNR - Forest Access Road
  - Federal / State Highway
  - Federal / State / County - Paved Road
  - Federal / State / DNR / Gravel Road
  - County - Gravel Road
  - County - Dirt Road (Seasonal)
  - Private - Paved Road
  - Private - Gravel Road
  - DNR - Management Access
  - Active Railroads
  - Abandoned Railroads
  - Canal
  - Dam
  - Dike
  - HydroPond
  - Intermittent Pond
  - Hamlet Pond
  - Inland Lake or River
  - Lake/Pond
  - Lock/Levee
  - Powerline River
  - Shoalway
  - Swamp
  - Lakes and Rivers All
  - Pipeline
  - Powerline
  - Unspecified
  - Fence
  - Non-Designated Recreation Trail
  - Aspen
  - Cedar
  - Burn Boundary
  - Escarpment
  - Flooding
  - Forest Product
  - Great Sand
  - Military Flange
  - Military Land
  - Wildlife Corridor
  - State Boundary
  - Section
  - Ecological Reference Areas
  - Coastal Environmental Areas
  - Critical Dunes
  - Natural Shores Vegetation Buffer
  - Natural Shores Living District
  - Eastern Mesquigue Managed Land
  - Forest Habitat Core Interior
  - Forest Habitat (Ponding Prairie)
  - Inland Wetland Habitat
  - Dedicated Management Areas
  - Natural Areas Lightly Disturbed
  - Wild & Scenic Rivers (USFS Lands)
  - Wild & Scenic Rivers (USFS Lands)
  - Sewer Treatment
  - Natural Shores Buffer
  - State Heritage River-Scape (MDC Designation)
  - Cold Water Streams
  - Cold Water Lakes
  - High Priority Four Stream Buffer
  - High Priority Four Stream Buffer
  - Type 1 and Type 2 Old Growth
  - Detail\_Type
  - Unspoiled Type 1 Old Growth
  - Unspoiled Type 2 Old Growth
  - Northern Long-Eared Bat Hibernaculum Buffer
  - Cave Winter Range
  - Wildlife Management Areas
  - Research, Development, and Military Lands
  - Wildlife Research Areas
  - Trail Head
  - Springs, Wetlands, or Riparian Areas
  - Detail\_Type
  - Spring or Seep
  - Wetland
  - Riparian Area
  - Concentrated Recreation Areas Polygons
  - Detail\_Type
  - Boat Access Site
  - Fishing Access Site
  - Recreation Area
  - State Forest Campground
  - Trail Trail Corridor
  - Trail Head
  - Mining Resource Area Polygon
  - Detail\_Type
  - Mining Mine
  - Unspoiled or Disturbed
  - Boat or Gravel Pit
  - Salt
  - Mudflat Mine
  - Other Mining Mine
  - Contiguous Resource Area
  - Habitat Areas and Corridors
  - Detail\_Type
  - Inland Corridor
  - Other Habitat Area
  - Recreation Resource Area
  - Possible Type 1 and Type 2 Old Growth
  - Detail\_Type
  - Possible Type 1 Old Growth Area
  - Possible Type 2 Old Growth Area
  - Cultural or Customary Use Area
  - Detail\_Type
  - Cultural Use Area
  - Customary Use Area
  - Potential Old Growth
  - Other SCA (No Category Assigned)
  - LP 24K DRG (transparent)
  - VALUE
  - 2
  - 3
  - 4
  - 5
  - 6
  - 7
  - 8
  - 9
  - 10
  - 11
  - 12
  - 13
  - 14
  - 15
  - 16
  - 17
  - 18
  - 19
  - 20
  - 21
  - 22
  - 23
  - 24
  - 25
  - 26
  - 27
  - 28
  - 29
  - 30
  - 31
  - 32
  - 33
  - 34
  - 35
  - 36
  - 37
  - 38
  - 39
  - 40
  - 41
  - 42
  - 43
  - 44
  - 45
  - 46
  - 47
  - 48
  - 49
  - 50
  - DNR Parcels