



# TIMBER SALE MAP

This information provided by authority of Part 525, 1994 PA 451, as amended.

|  |              |   |                    |                    |           |         |
|--|--------------|---|--------------------|--------------------|-----------|---------|
| Forest Management Unit<br>Sault Ste. Marie |              | County<br>Mackinac  | Mapped By<br>Plato | Date<br>08/25/2022 | Page<br>1 | of<br>1 |
| Township<br>43N                            | Range<br>07W | Section(s) and Subdivision(s)<br>Sec 34: S1/2NW,S1/2NE,SW |                    | Scale<br>1:15,840  |           |         |

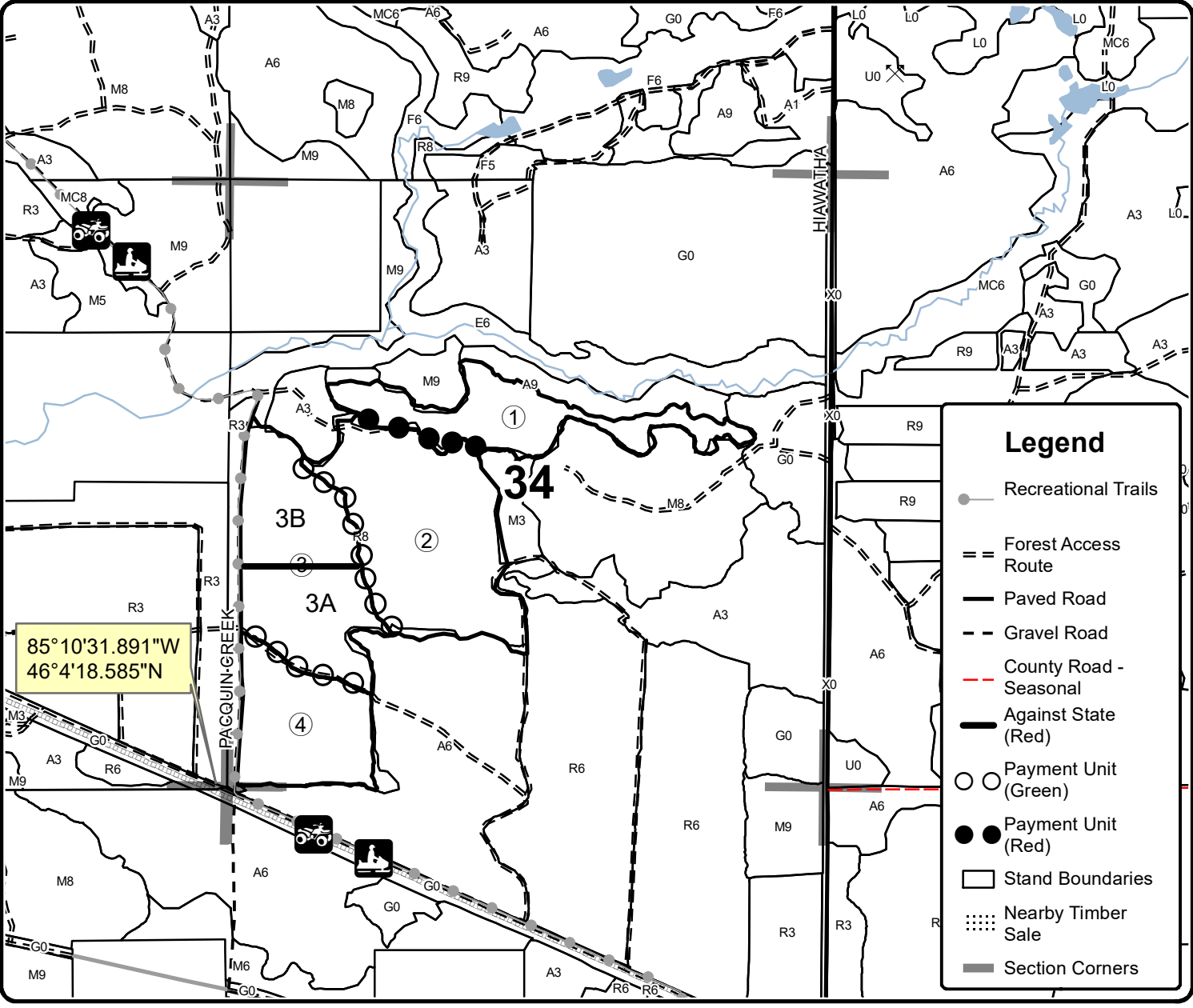
| Cover Type        |                      |                         |                   | Density                     |                        |
|-------------------|----------------------|-------------------------|-------------------|-----------------------------|------------------------|
| A = Aspen         | H = Hemlock          | N = Marsh               | U = Upland Brush  | 0 = Non Stocked             | 5 = Pole Timber Medium |
| B = Paper Birch   | J = Jack Pine        | O = Oak                 | UM = Upland Mixed | 1 = Seedling Sapling Poor   | 6 = Pole Timber Well   |
| C = Cedar         | L = Lowland Brush    | P = Lowland Poplar      | V = Bog or Marsh  | 2 = Seedling Sapling Medium | 7 = Saw Timber Poor    |
| D = Treed Bog     | LM = Lowland Mixed   | Q = Mixed Swamp Conifer | W = White Pine    | 3 = Seedling Sapling Well   | 8 = Saw Timber Medium  |
| E = Swamp Hdwoods | M = Mpl, Bch, Brch   | R = Red Pine            | X = Non Stocked   | 4 = Pole Timber Poor        | 9 = Saw Timber Well    |
| F = Spruce Fir    | MC = Mixed Conifer   | S = Black Spruce        | Z = Water         |                             |                        |
| G = Grass         | MD = Mixed Deciduous | T = Tamarack            |                   |                             |                        |

| PU | Acres | PU | Acres |
|----|-------|----|-------|
| 1  | 26.4  | 4  | 26.4  |
| 2  | 51.5  |    |       |
| 3  | 43.0  |    |       |

## Sharp Cheddar

### Compartment 142

### 147.3 Acres



### Legend

- Recreational Trails
- Forest Access Route
- Paved Road
- Gravel Road
- County Road - Seasonal
- Against State (Red)
- Payment Unit (Green)
- Payment Unit (Red)
- Stand Boundaries
- Nearby Timber Sale
- Section Corners

