



### TIMBER SALE MAP

This information provided by authority of Part 525, 1994 PA 451, as amended.

Sale Number <b>45-114-23</b>	Date <b>11/20/2023</b>	
Scale <b>1:24,000</b>	Page <b>1</b>	Of <b>1</b>

Forest Management Unit <b>Sault Ste Marie Mgt Unit</b>	County <b>Mackinac</b>	Mapped By: <b>C. Flatt</b>
		Cruised By: <b>DNR Staff</b>

Township <b>43N</b>	Range <b>08W</b>	Section(s) and Subdivision(s) <b>Sec. 23 E1/2NE; Sec. 26 SWNW,NWSW; Sec. 27 NWNW,S1/2NW,NWNE,SENE;</b>
------------------------	---------------------	--

Cover Type			
A = Aspen	J = Jack Pine	O = Oak	U = Upland Brush
B = Paper Birch	K = Rock	P = Lowland Poplar	UM = Upland Mix Forest
C = Cedar	L = Lowland Brush	Q = Mixed Swamp Conifer	V = Bog or Marsh
D = Treed Bog	LM = Lowland Mix Forest	R = Red Pine	W = White Pine
E = Swamp Hardwoods	M = Maple, Beech, Birch	S = Black Spruce	X = Non Stocked
F = Spruce/Fir	MC = Mixed Conifer	T = Tamarack	Y = Sand
G = Grass	MD = Mixed Deciduous	Z = Water	
H = Hemlock	N = Marsh		

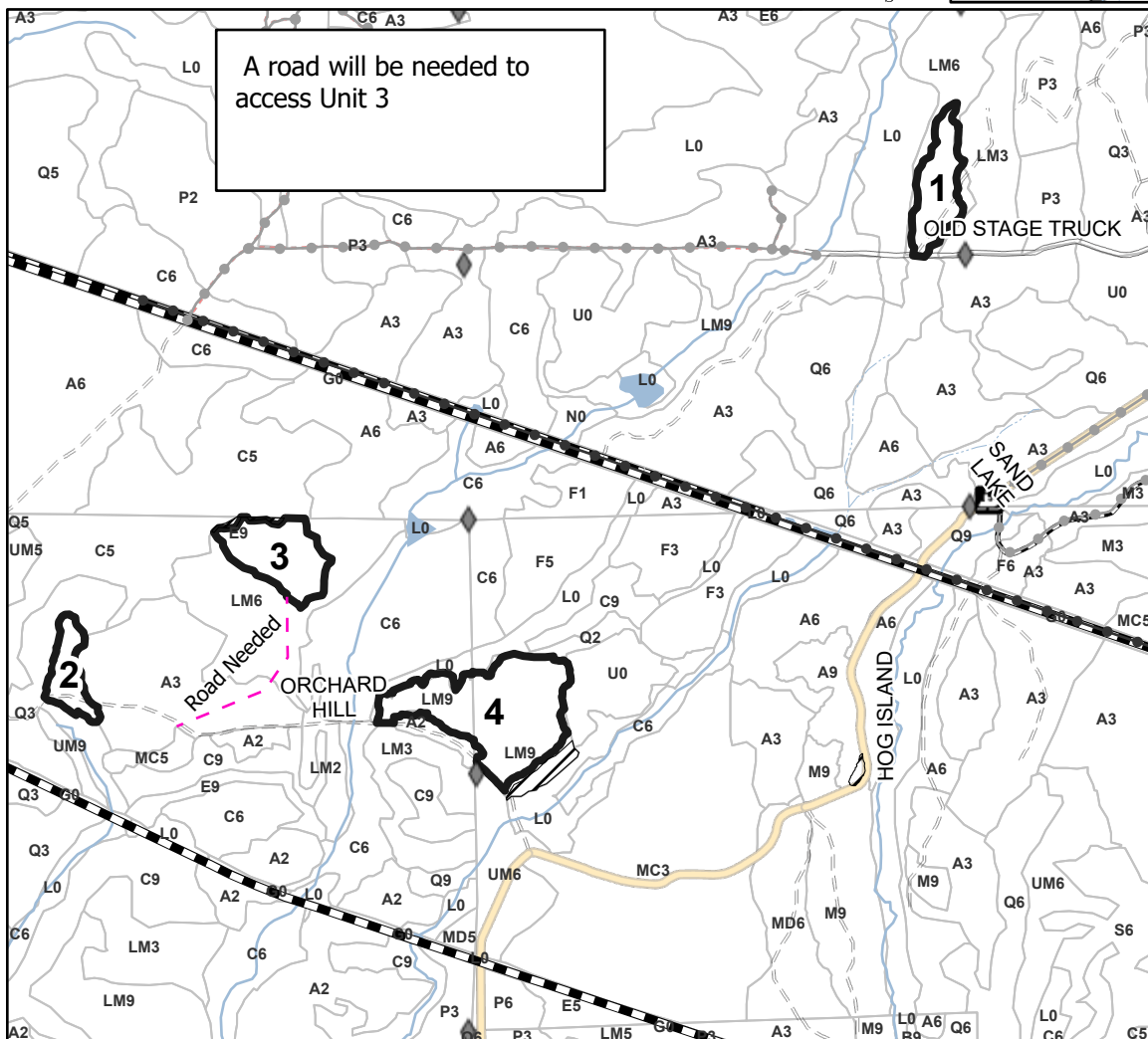
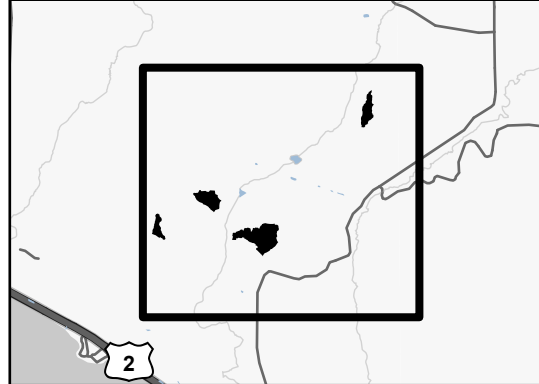
Density	
0 = Non Stocked	5 = Pole Timber Medium
1 = Seedling Sapling Poor	6 = Pole Timber Well
2 = Seedling Sapling Medium	7 = Saw Timber Poor
3 = Seedling Sapling Well	8 = Saw Timber Medium
4 = Pole Timber Poor	9 = Saw Timber Well

PU #	Acres
1	11.7
2	7
3	15.1
4	34.2

## Double Barrel Mix

### 68.0 Acres

### Locator Map (1:100,000)



### Legend

- Against State (Red)
- Stand
- Retention Areas
- Recreational Trail
- Road Needed
- Primary Forest Road
- Secondary Forest Road
- Forest Access Route
- Administrative Access Only
- Non-DNR Road
- Pipeline
- Powerline
- Snowmobile
- Field Grade Corner

Use QR Code to open Map in App

