



TIMBER SALE MAP

This information provided by authority of Part 525, 1994 PA 451, as amended.

Forest Management Unit Sault Ste. Marie		County Mackinac	Mapped By Plato	Date 06/01/2023	Page 1	of 1
Township 43N	Range 06W	Section(s) and Subdivision(s) Sec. 11 S1/2SW, SWSE Sec. 14 N1/2NW, SENW, W1/2NE, NESW, NWSE		Scale 1:15,840		

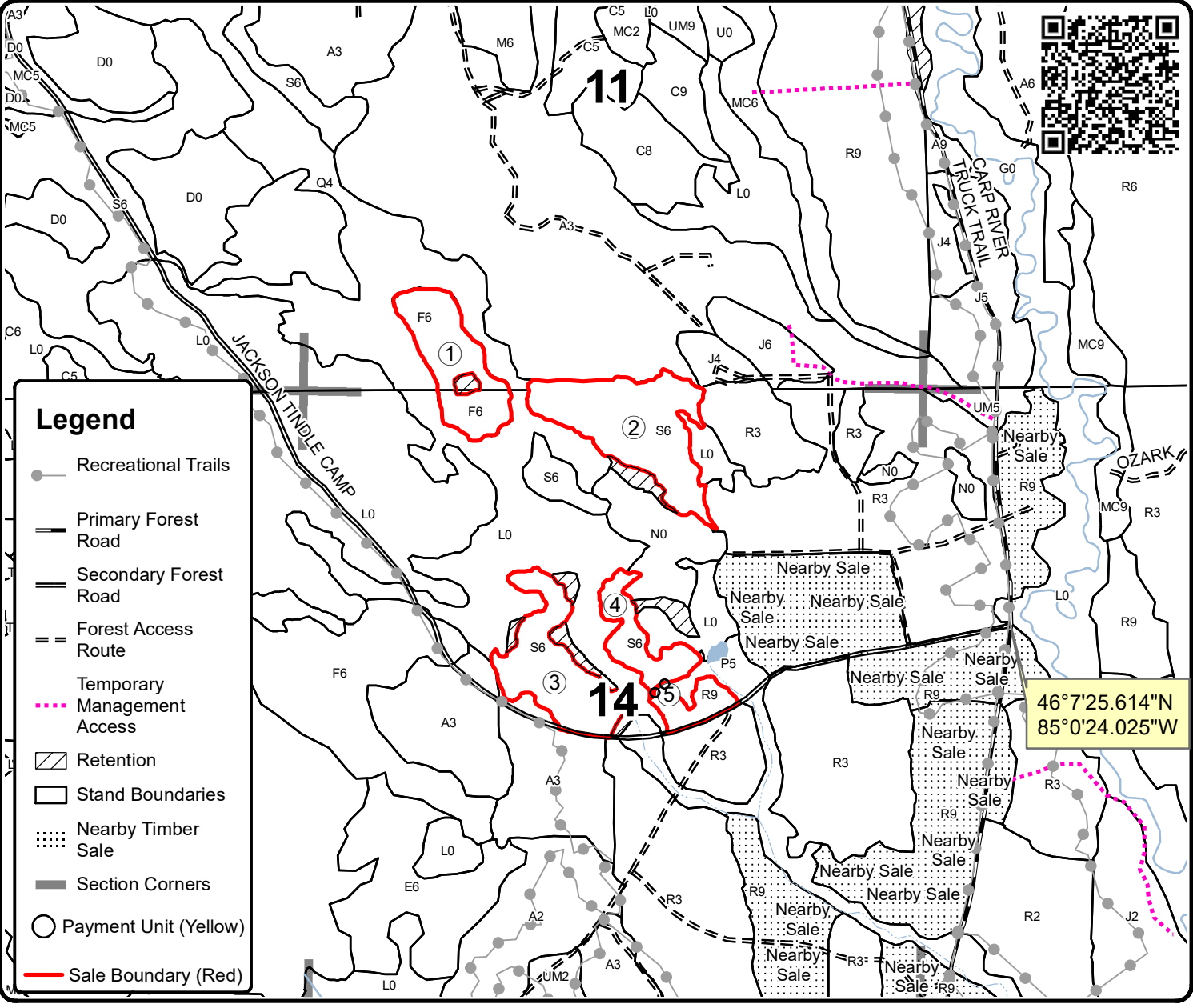
Cover Type				Density			
A = Aspen	H = Hemlock	N = Marsh	U = Upland Brush	0 = Non Stocked	5 = Pole Timber Medium		
B = Paper Birch	J = Jack Pine	O = Oak	UM = Upland Mixed	1 = Seedling Sapling Poor	6 = Pole Timber Well		
C = Cedar	L = Lowland Brush	P = Lowland Poplar	V = Bog or Marsh	2 = Seedling Sapling Medium	7 = Saw Timber Poor		
D = Treed Bog	LM = Lowland Mixed	Q = Mixed Swamp Conifer	W = White Pine	3 = Seedling Sapling Well	8 = Saw Timber Medium		
E = Swamp Hdwoods	M = Mpl, Bch, Brch	R = Red Pine	X = Non Stocked	4 = Pole Timber Poor	9 = Saw Timber Well		
F = Spruce Fir	MC = Mixed Conifer	S = Black Spruce	Z = Water				
G = Grass	MD = Mixed Deciduous	T = Tamarack					

PU	Acres	PU	Acres
1	14.4	4	8.0
2	23.0	5	4.3
3	17.0		

Patches O'Spruceihan

Compartment 106/107

66.7 Acres



Legend

- Recreational Trails
- Primary Forest Road
- Secondary Forest Road
- Forest Access Route
- Temporary Management Access
- Retention
- Stand Boundaries
- Nearby Timber Sale
- Section Corners
- Payment Unit (Yellow)
- Sale Boundary (Red)

46°7'25.614"N
85°0'24.025"W

