



TIMBER SALE MAP

This information provided by authority of Part 525, 1994 PA 451, as amended.

Sale Number 45-131-24	Date 07/11/2024
Scale 1:24,000	Page 1
	Of 1

Forest Management Unit Sault Ste Marie Mgt Unit	County Mackinac	Mapped By: Plato
		Cruised By: N/A

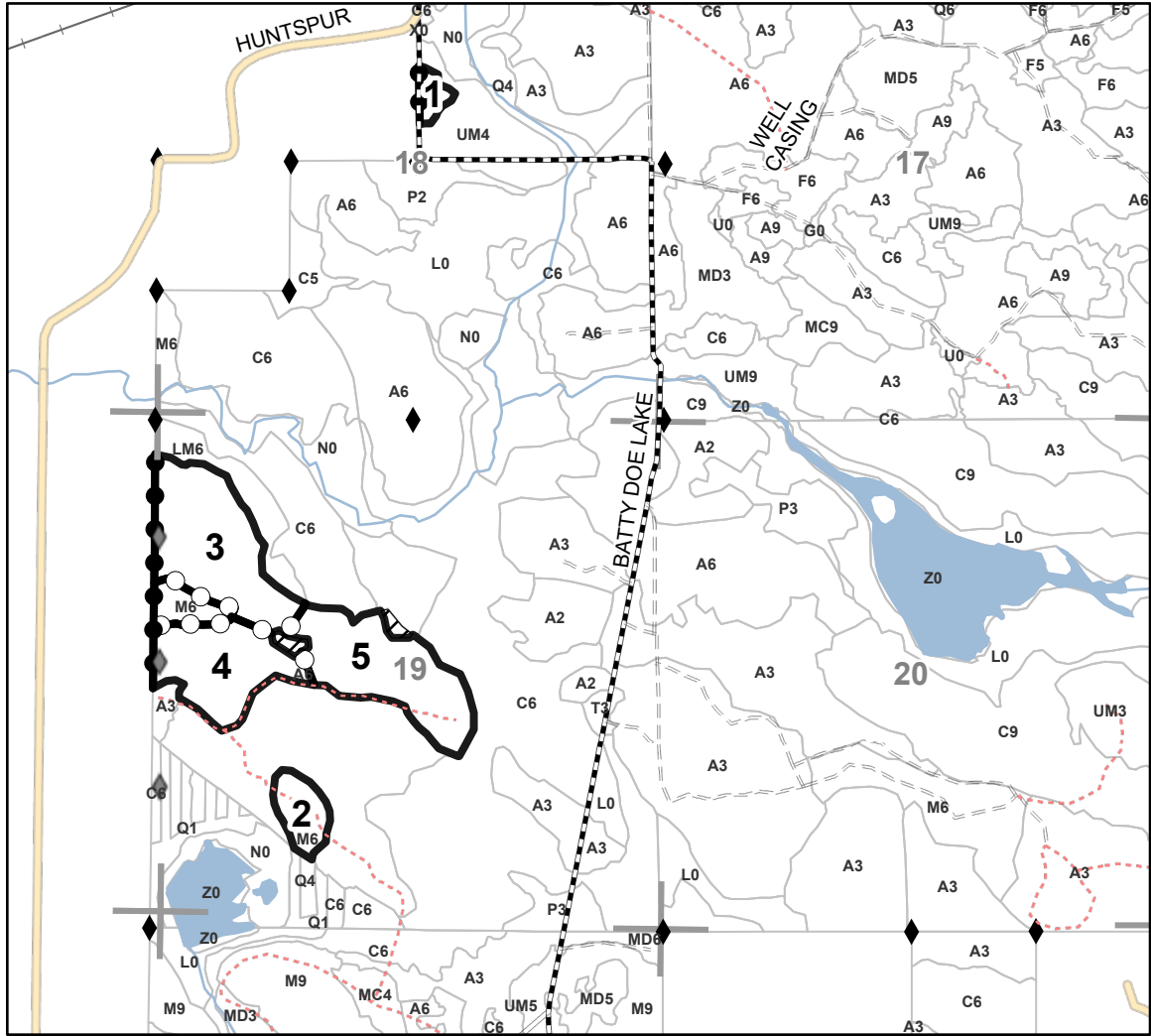
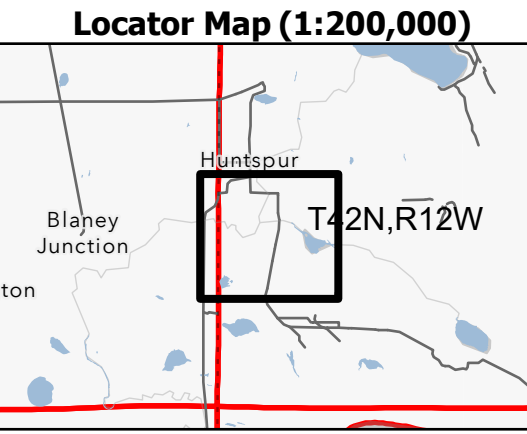
Township 42N	Range 12W	Section(s) and Subdivision(s) Sec. 18 SWNE; Sec. 19 NWNW,S1/2NW,SWNE,SW,NWSE;
------------------------	---------------------	--

Cover Type			
A = Aspen	J = Jack Pine	O = Oak	U = Upland Brush
B = Paper Birch	K = Rock	P = Lowland Poplar	UM = Upland Mix Forest
C = Cedar	L = Lowland Brush	Q = Mixed Swamp Conifer	V = Bog or Marsh
D = Treed Bog	LM = Lowland Mix Forest	R = Red Pine	W = White Pine
E = Swamp Hardwoods	M = Maple, Beech, Birch	S = Black Spruce	X = Non Stocked
F = Spruce/Fir	MC = Mixed Conifer	T = Tamarack	Y = Sand
G = Grass	MD = Mixed Deciduous		Z = Water
H = Hemlock	N = Marsh		

Density	
0 = Non Stocked	5 = Pole Timber Medium
1 = Seedling Sapling Poor	6 = Pole Timber Well
2 = Seedling Sapling Medium	7 = Saw Timber Poor
3 = Seedling Sapling Well	8 = Saw Timber Medium
4 = Pole Timber Poor	9 = Saw Timber Well

PU #	Acres
1	3.1
2	14.6
3	37.2
4	26.4
5	34

C192
Contract
115.3 Acres



Legend

- Payment Unit
- Stand
- Retention Areas
- Payment Unit (Yellow)
- Private Line (Blue)
- Paved Road
- Gravel Road
- County Road - Seasonal
- Private Road
- Primary Forest Road
- Secondary Forest Road
- Forest Access Route
- Administrative Access Only
- Non-DNR Road
- Active Railroad
- Field Grade Corner
- Survey Grade Corner

Use QR Code to open Map in App

