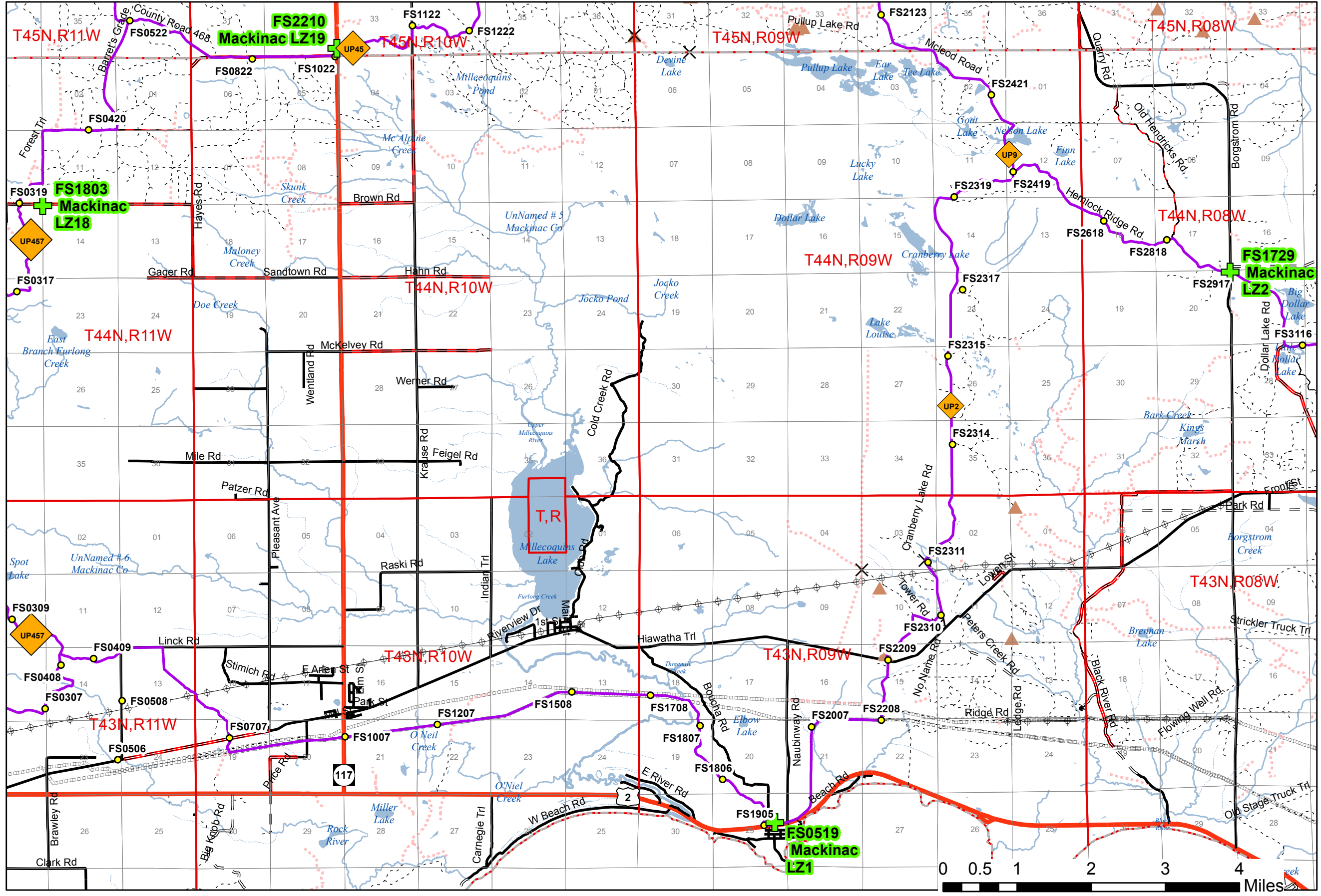
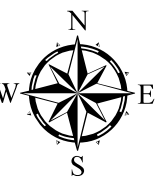


Legend

- + EUP_LZ_MGRS
- 911 Trail Number
- Designated Snowmobile Trails
- Designated ATV Trails
- - - - - Designated ORV Route
- = Highway
- County Paved Roads
- Paved Roads
- County Gravel Roads
- = Gravel Roads
- - - - - County Poor Dirt Roads
- - - - - Poor Dirt Roads
- - - - - Closed
- X Gate
- ▲ Berms
- X Bridge
- Stream
- River
- Lakes
- - - - - Pipeline
- ⊕ Powerline
- County
- TownRange
- Sections

Landing Zone Name	Coordinates	911 FS Number
Mackinac LZ1	85°27'1.53"W, 46°5'41.21"N	FS0519
Mackinac LZ2	85°19'16.32"W, 46°12'6.48"N	FS1729
Mackinac LZ18	85°39'19.45"W, 46°12'58.6"N	FS1803
Mackinac LZ19	85°34'20.48"W, 46°14'48.41"N	FS2210



Matt Payment
1/31/18