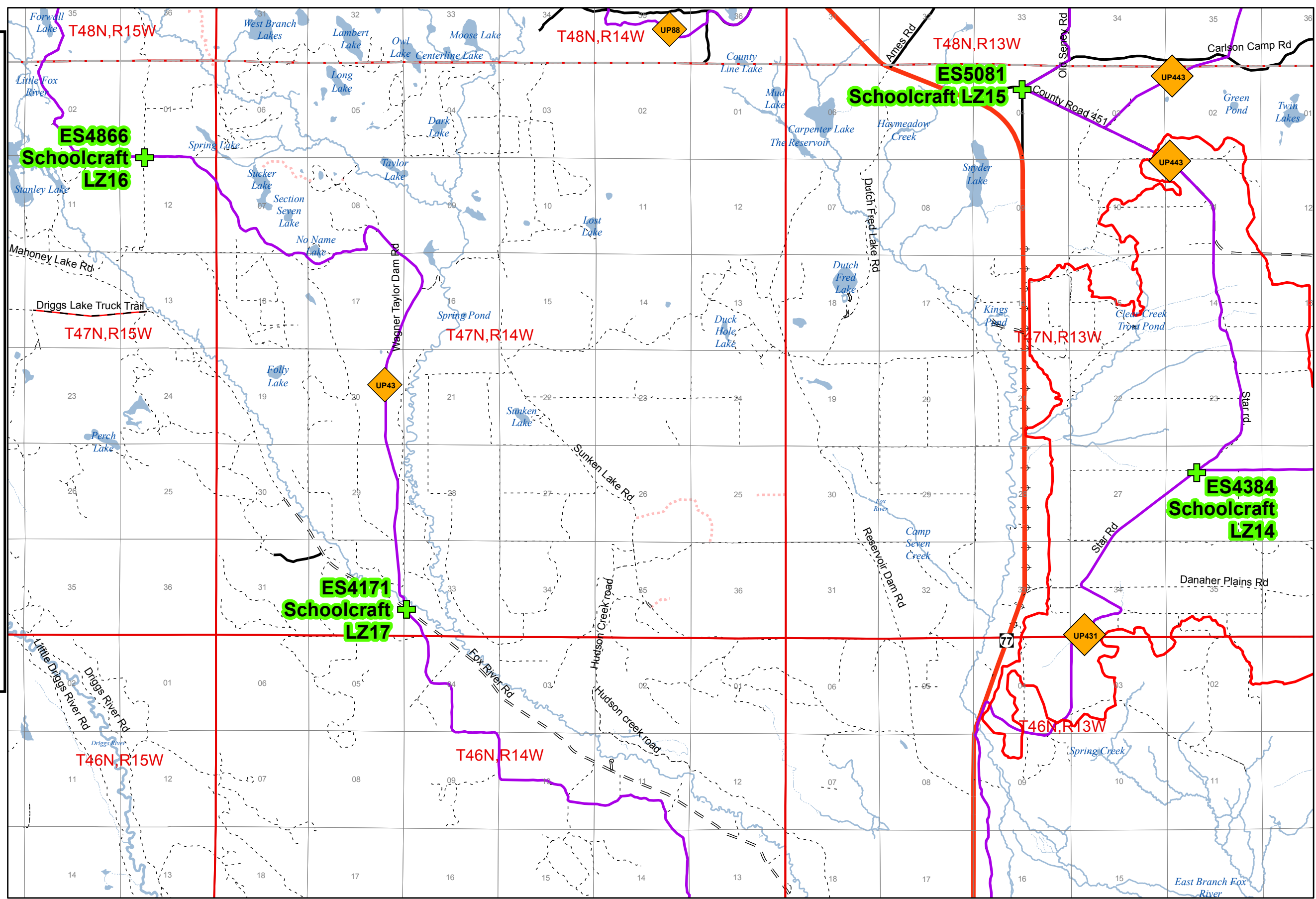
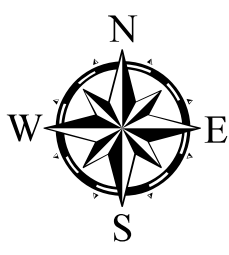


Legend

- + Landing Zones
- Designated Snowmobile Trails
- Designated ATV Trails
- Designated ORV Route
- Highway
- County Paved Roads
- Paved Roads
- County Gravel Roads
- Gravel Roads
- County Poor Dirt Roads
- Poor Dirt Roads
- Closed
- Stream
- River
- Lakes
- ✕ Gate
- ▲ Berms
- Bridge
- ⊕ Powerline
- State Boundary
- County
- Sections
- TownRange



Landing Zone Name	Coordinates	Nearest 911 FS Number
Schoolcraft LZ14	85°53'59.88"W, 46°26'35.08"N	ES4384
Schoolcraft LZ15	85°56'17.27"W, 46°30'4.12"N	ES5081
Schoolcraft LZ16	86°7'50.88"W, 46°29'26.88"N	ES4866
Schoolcraft LZ17	86°4'23.55"W, 46°25'20.51"N	ES4171

