

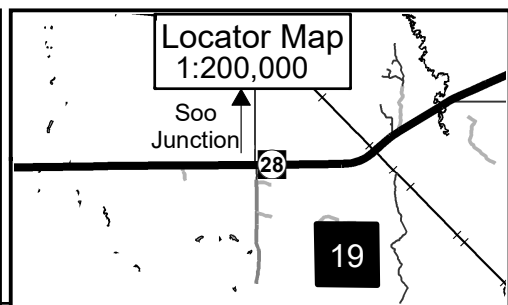
TIMBER SALE MAP

This information provided by authority of Part 525, 1994 PA 451, as amended.

Sale Number 42 - 008

Year 19

Forest Management Unit Newberry		County Chippewa	Mapped By Lester Livermore	Date 04/08/2019	Page 1	of 1
Township 47N	Range 09W	Section(s) and Subdivision(s) Section 19: NWNW, S1/2NW, N1/2SW; SWSW		Scale 1:15,840		
Cover Type			Density			
A = Aspen	H = Hemlock	N = Marsh	U = Upland Brush	0 = Non Stocked	5 = Pole Timber Medium	
B = Paper Birch	J = Jack Pine	O = Oak	UM = Upland Mixed	1 = Seedling Sapling Poor	6 = Pole Timber Well	
C = Cedar	L = Lowland Brush	P = Lowland Poplar	V = Bog or Marsh	2 = Seedling Sapling Medium	7 = Saw Timber Poor	
D = Tread Bog	LM = Lowland Mixed	Q = Mixed Swamp Conifer	W = White Pine	3 = Seedling Sapling Well	8 = Saw Timber Medium	
E = Swamp Hdwoods	M = Mpl, Bch, Brch	R = Red Pine	X = Non Stocked	4 = Pole Timber Poor	9 = Saw Timber Well	
F = Spruce Fir	MC = Mixed Conifer	S = Black Spruce	Z = Water			
G = Grass	MD = Mixed Deciduous	T = Tamarack				



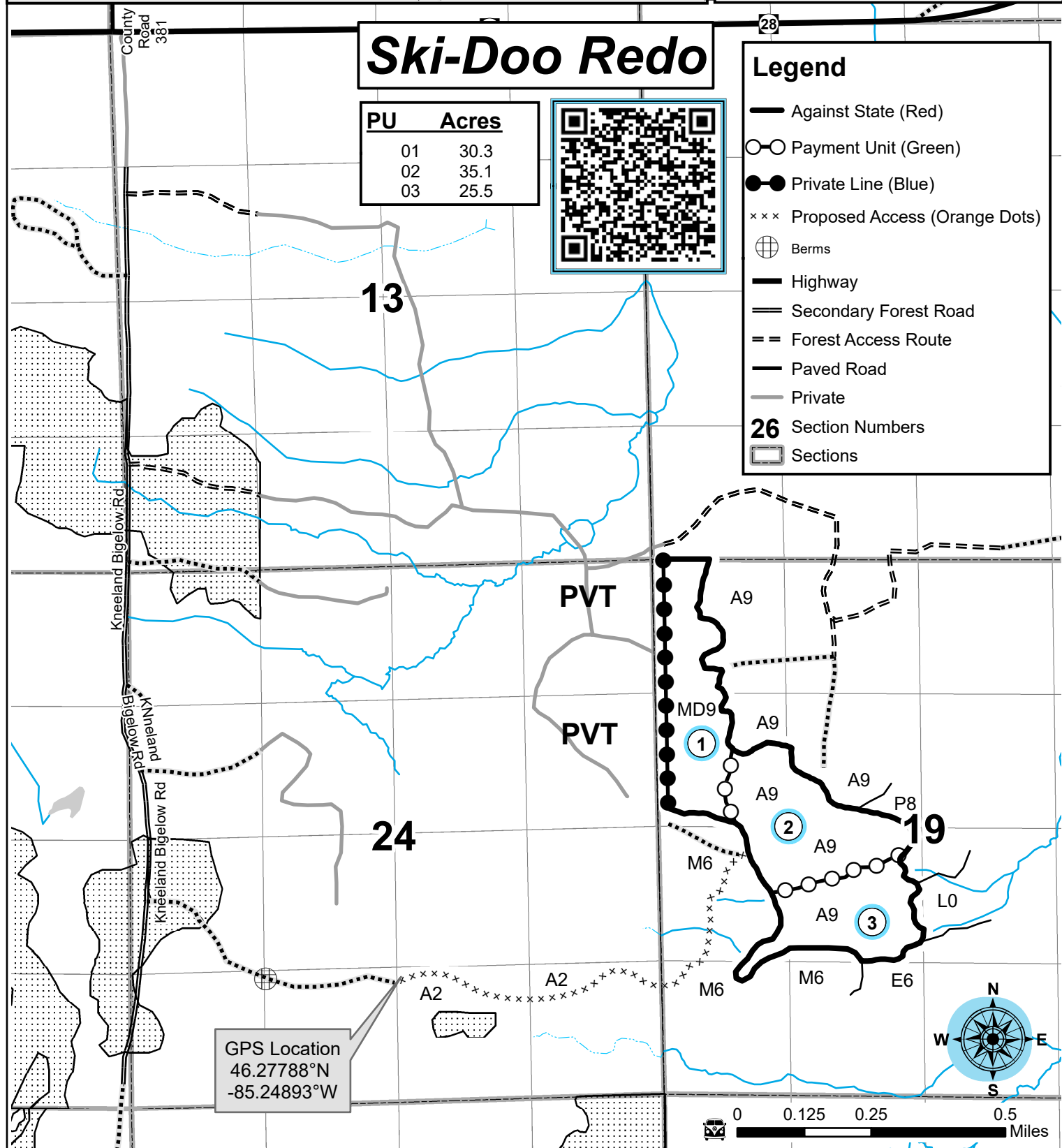
Ski-Doo Redo

PU	Acres
01	30.3
02	35.1
03	25.5



Legend

- Against State (Red)
- Payment Unit (Green)
- Private Line (Blue)
- Proposed Access (Orange Dots)
- Berms
- Highway
- Secondary Forest Road
- Forest Access Route
- Paved Road
- Private
- 26** Section Numbers
- Sections



GPS Location
46.27788°N
-85.24893°W

