



TIMBER SALE MAP

This information provided by authority of Part 525, 1994 PA 451, as amended.

Forest Management Unit Newberry	County Luce	Mapped By Lester Livermore	Date 09/02/2019	Page 1	of 1
Cruised By Newberry Unit / Grossman Forestry					

Township 47N	Range 09W	Section(s) and Subdivision(s) Section 13 - SWNE, W1/2SW Section 14 - NW, S1/2NE, E1/2SW, SE	Scale 1:15,840
-----------------	--------------	--	-------------------

Cover Type

A = Aspen	H = Hemlock	N = Marsh	U = Upland Brush
B = Paper Birch	J = Jack Pine	O = Oak	UM = Upland Mixed
C = Cedar	L = Lowland Brush	P = Lowland Poplar	V = Bog or Marsh
D = Treed Bog	LM = Lowland Mixed	Q = Mixed Swamp Conifer	W = White Pine
E = Swamp Hdwoods	M = Mpl, Bch, Brch	R = Red Pine	X = Non Stocked
F = Spruce Fir	MC = Mixed Conifer	S = Black Spruce	Z = Water
G = Grass	MD = Mixed Deciduous	T = Tamarack	

Density

0 = Non Stocked	5 = Pole Timber Medium
1 = Seedling Sapling Poor	6 = Pole Timber Well
2 = Seedling Sapling Medium	7 = Saw Timber Poor
3 = Seedling Sapling Well	8 = Saw Timber Medium
4 = Pole Timber Poor	9 = Saw Timber Well

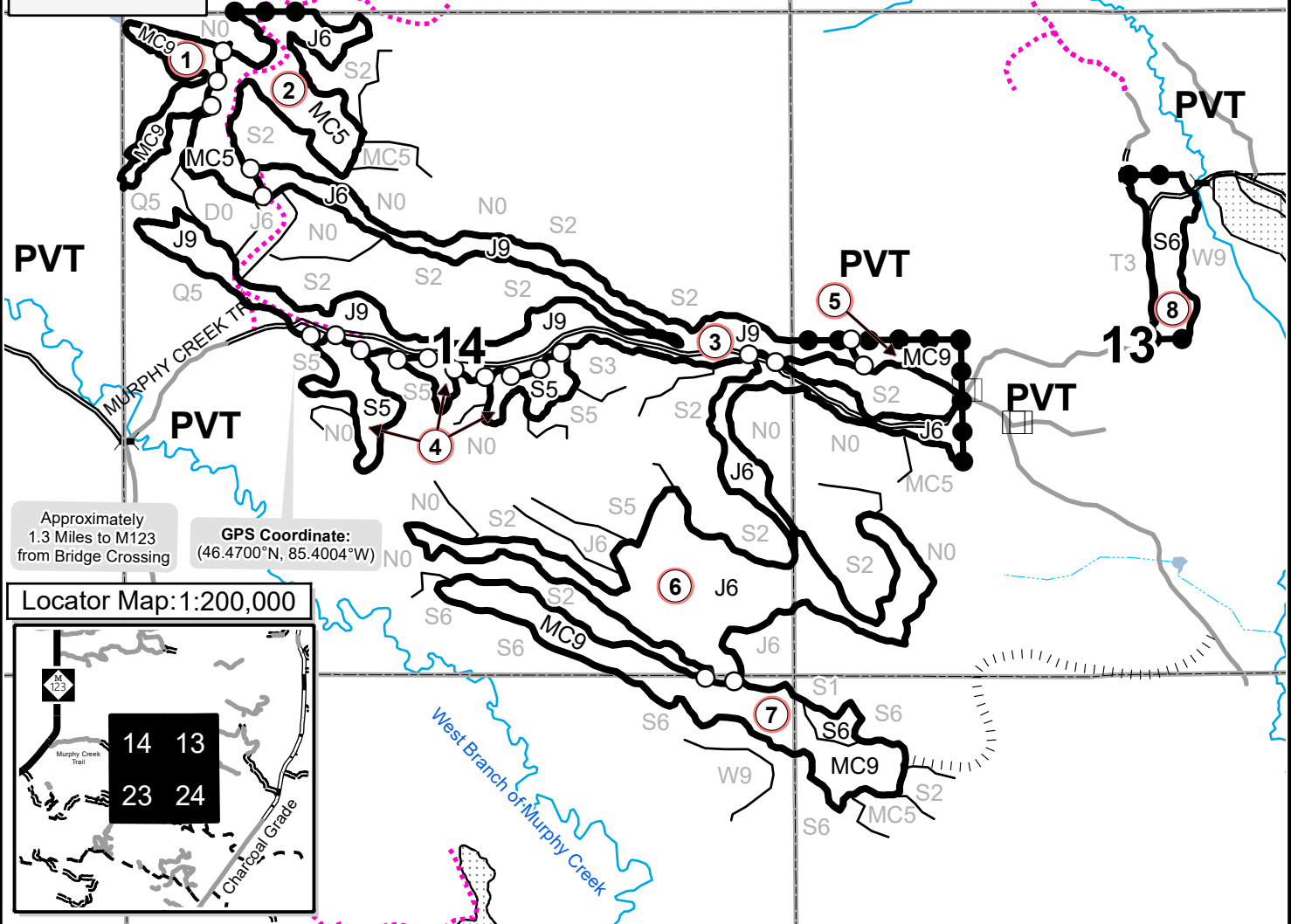
PU	Acres
1	7.9
2	21.6
3	43.5
4	13.2
5	5.0
6	54.0
7	28.8
8	9.5

Timbco Timber

Compartment 80
183.5 Acres

Legend

PU Label	Secondary Forest Road
Payment Unit (Yellow)	Forest Access Route
Private Line (Blue)	Gravel Road
14 Section Numbers	Private
Sections	Temporary Management Access
	Possible Private Access
	Lakes and Rivers
	Nearby Timber Sales



Approximately 1.3 Miles to M123 from Bridge Crossing

GPS Coordinate: (46.4700°N, 85.4004°W)

Locator Map: 1:200,000

