



# TIMBER SALE MAP

This information provided by authority of Part 525, 1994 PA 451, as amended.

Sale Number	Year
42-005-21	2021

Forest Management Unit Newberry	County Chippewa	Mapped By Livermore	Date 10/26/2020	Page 1	of 1
Township 50N	Range 06W / 07W	Section(s) and Subdivision(s) Section 19: S½NW,SENE,N½SW,N½SE Section 20: S½NW,N½SW Section 24: SENE,NESE	Scale 1:15,840		

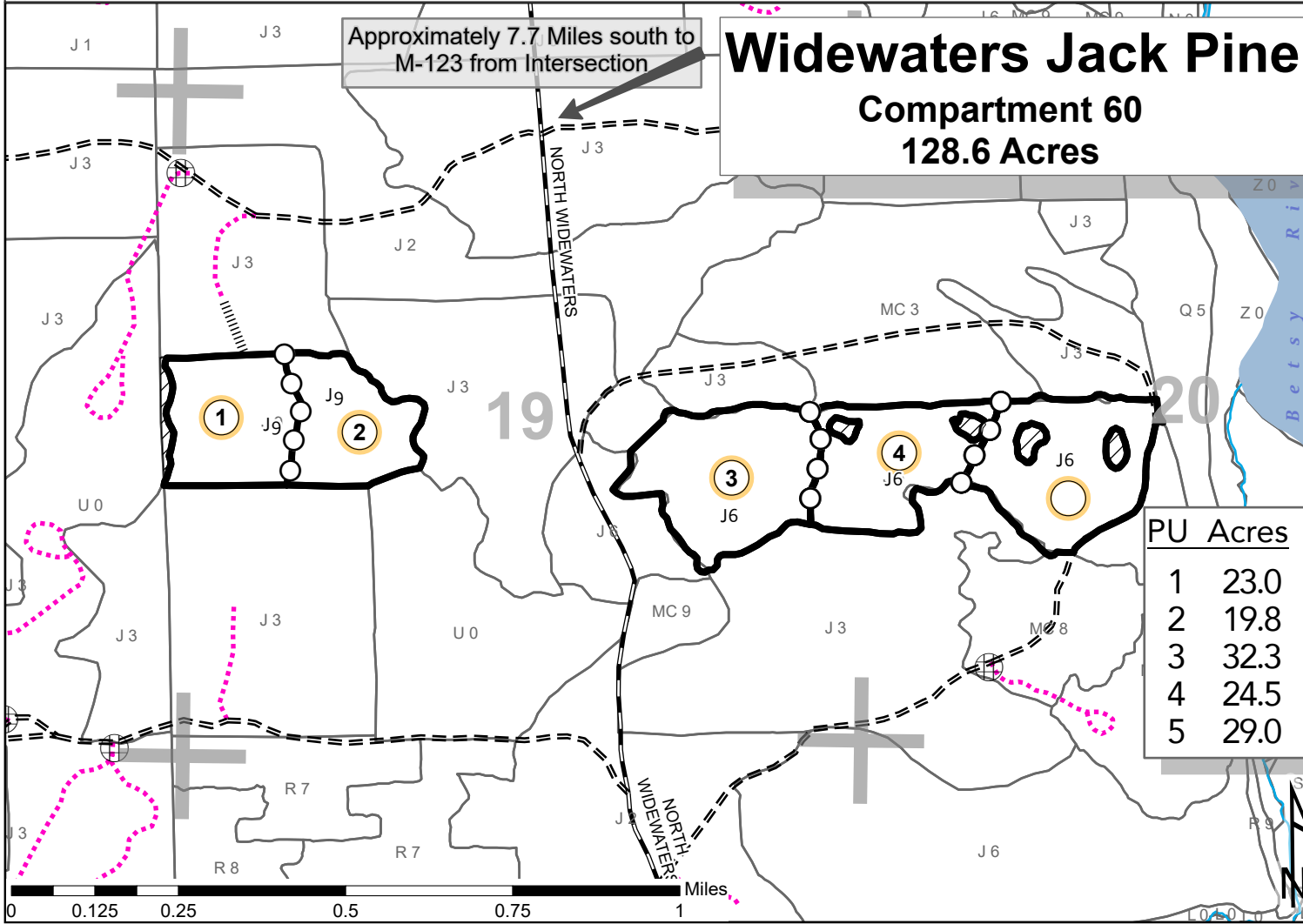
<b>Cover Type</b>				<b>Density</b>	
A = Aspen	H = Hemlock	N = Marsh	U = Upland Brush	0 = Non Stocked	5 = Pole Timber Medium
B = Paper Birch	J = Jack Pine	O = Oak	UM = Upland Mixed	1 = Seedling Sapling Poor	6 = Pole Timber Well
C = Cedar	L = Lowland Brush	P = Lowland Poplar	V = Bog or Marsh	2 = Seedling Sapling Medium	7 = Saw Timber Poor
D = Treed Bog	LM = Lowland Mixed	Q = Mixed Swamp Conifer	W = White Pine	3 = Seedling Sapling Well	8 = Saw Timber Medium
E = Swamp Hdwoods	M = Mpl, Bch, Brch	R = Red Pine	X = Non Stocked	4 = Pole Timber Poor	9 = Saw Timber Well
F = Spruce Fir	MC = Mixed Conifer	S = Black Spruce	Z = Water		
G = Grass	MD = Mixed Deciduous	T = Tamarack			



- Against State (Red)
- Payment Unit (Yellow)
- Payment Unit Label
- Retention Area
- 01** Section Numbers
- Section Corners
- Berms
- Perennial River
- Lakes and Rivers
- Retention Area
- DNR - Primary Forest Road
- DNR - Secondary Forest Road
- DNR - Forest Access Route
- Federal / State Highway
- Federal / State / County - Paved Road
- Federal / State - Dirt / Gravel Road
- County - Gravel Road
- County - Dirt Road (Seasonal)
- Private - Paved Road
- Private - Dirt / Gravel Road
- DNR - Management Access
- DNR - Temporary Management Access
- Proposed Access (Yellow Ribbon)

Approximately 7.7 Miles south to M-123 from Intersection

## Widewaters Jack Pine Compartment 60 128.6 Acres



PU	Acres
1	23.0
2	19.8
3	32.3
4	24.5
5	29.0

Locator Map: 1:200,000  
- Main Map Extent

