



TIMBER SALE MAP

This information provided by authority of Part 525, 1994 PA 451, as amended.

Forest Management Unit Newberry		County Chippewa	Mapped By A. Livermore	Date 09/24/2021	Page 1	of 2
Township 47N	Range 07W	Section(s) and Subdivision(s) SENE sec. 11, SW1/4, SWNW sec. 12, NW1/4, NWNE, SWNE, SENE, NWSW, NESW, SESW, NWSE, NESE, SWSE sec. 13			Scale 1:15,840	
Cover Type				Density		
A = Aspen	H = Hemlock	N = Marsh	U = Upland Brush	0 = Non Stocked	5 = Pole Timber Medium	
B = Paper Birch	J = Jack Pine	O = Oak	UM = Upland Mixed	1 = Seedling Sapling Poor	6 = Pole Timber Well	
C = Cedar	L = Lowland Brush	P = Lowland Poplar	V = Bog or Marsh	2 = Seedling Sapling Medium	7 = Saw Timber Poor	
D = Treed Bog	LM = Lowland Mixed	Q = Mixed Swamp Conifer	W = White Pine	3 = Seedling Sapling Well	8 = Saw Timber Medium	
E = Swamp Hdwoods	M = Mpl, Bch, Brch	R = Red Pine	X = Non Stocked	4 = Pole Timber Poor	9 = Saw Timber Well	
F = Spruce Fir	MC = Mixed Conifer	S = Black Spruce	Z = Water			
G = Grass	MD = Mixed Deciduous	T = Tamarack				

PU	Acres	PU	Acres
1	37.5	7	24.2
2	42.5	8	31.7
3	24.7	9	16.9
4	27.2	10	42.9
5	21	11	17
6	16.8	12	35.3

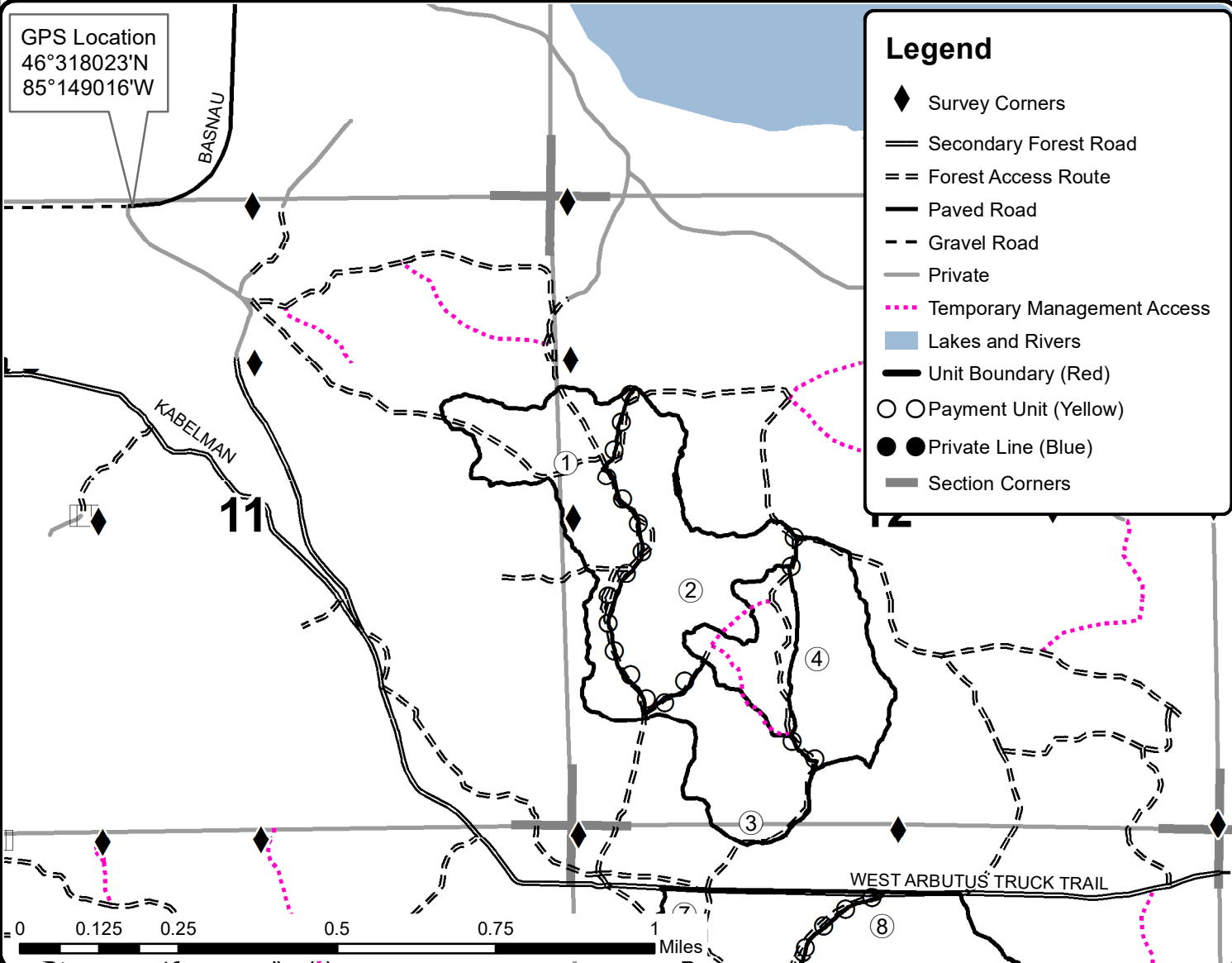
Arbutus Truck Trail Hardwoods

Compartment 42074

337.7 Acres



GPS Location
46°318023'N
85°149016'W



Legend

- ◆ Survey Corners
- == Secondary Forest Road
- == Forest Access Route
- Paved Road
- - Gravel Road
- Private
- ◆◆ Temporary Management Access
- Lakes and Rivers
- Unit Boundary (Red)
- Payment Unit (Yellow)
- Private Line (Blue)
- Section Corners

