



TIMBER SALE MAP

This information provided by authority of Part 525, 1994 PA 451, as amended.

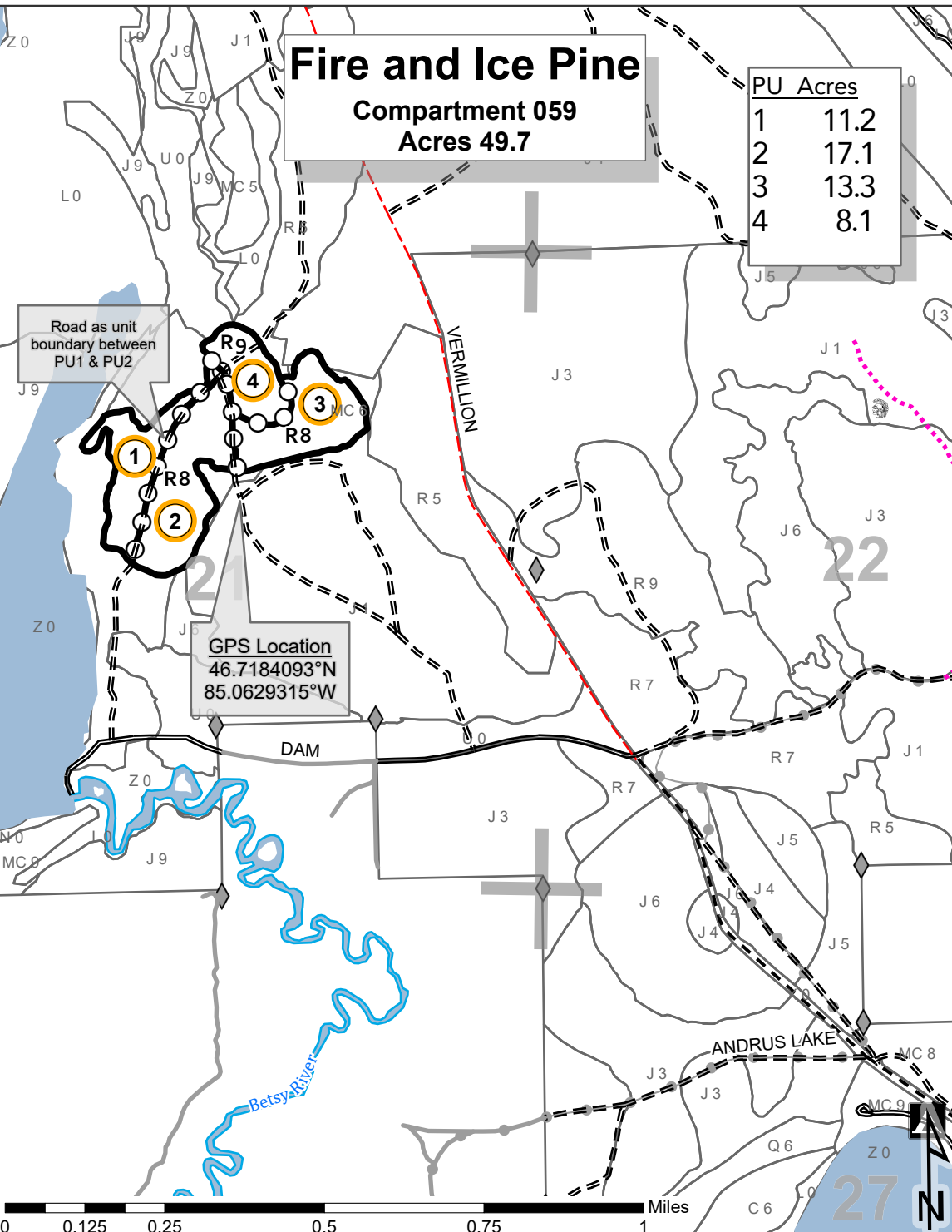
Forest Management Unit Newberry		County Chippewa	Mapped By L. Livermore	Date 11/9/2021	Page 1	of 1
Township 50N	Range 06W	Section(s) and Subdivision(s) Section 21: E½NW, W½NE		Scale 1:15,840		

Cover Type

A = Aspen	H = Hemlock	N = Marsh	U = Upland Brush
B = Paper Birch	J = Jack Pine	O = Oak	UM = Upland Mixed
C = Cedar	L = Lowland Brush	P = Lowland Poplar	V = Bog or Marsh
D = Tread Bog	LM = Lowland Mixed	Q = Mixed Swamp Conifer	W = White Pine
E = Swamp Hdwoods	M = Mpl, Bch, Brch	R = Red Pine	X = Non Stocked
F = Spruce Fir	MC = Mixed Conifer	S = Black Spruce	Z = Water
G = Grass	MD = Mixed Deciduous	T = Tamarack	

Density

0 = Non Stocked	5 = Pole Timber Medium
1 = Seedling Sapling Poor	6 = Pole Timber Well
2 = Seedling Sapling Medium	7 = Saw Timber Poor
3 = Seedling Sapling Well	8 = Saw Timber Medium
4 = Pole Timber Poor	9 = Saw Timber Well



- Payment Unit Label
- Against State (Red)
- Payment Unit (Yellow)
- Recreational Trail
- Section Numbers
- Section Corners
- State Forest Campground
- Perennial River
- Lakes and Rivers
- Secondary Forest Road
- Forest Access Route
- Gravel Road
- County Road - Seasonal
- Private
- Temporary Management Access

Locator Map: 1:200,000

