



TIMBER SALE MAP

This information provided by authority of Part 525, 1994 PA 451, as amended.

Sale Number 42-009-24	Date 06/04/2024	
Scale 1:31,680	Page 1	Of 1

Forest Management Unit Newberry Mgt Unit	County Chippewa	Mapped By: A. Ciaramitaro
		Cruised By: Newberry Unit Staff

Township 46N	Range 06W / 07W	Section(s) and Subdivision(s) Sec. 12 S1/2SW,NESE,S1/2SE; Sec. 7 S1/2NW,S1/2NE,SW; Sec. 8 SWNW;
-----------------	--------------------	--

Cover Type			
A = Aspen	J = Jack Pine	O = Oak	U = Upland Brush
B = Paper Birch	K = Rock	P = Lowland Poplar	UM = Upland Mix Forest
C = Cedar	L = Lowland Brush	Q = Mixed Swamp Conifer	V = Bog or Marsh
D = Treed Bog	LM = Lowland Mix Forest	R = Red Pine	W = White Pine
E = Swamp Hardwoods	M = Maple, Beech, Birch	S = Black Spruce	X = Non Stocked
F = Spruce/Fir	MC = Mixed Conifer	T = Tamarack	Y = Sand
G = Grass	MD = Mixed Deciduous	Z = Water	
H = Hemlock	N = Marsh		

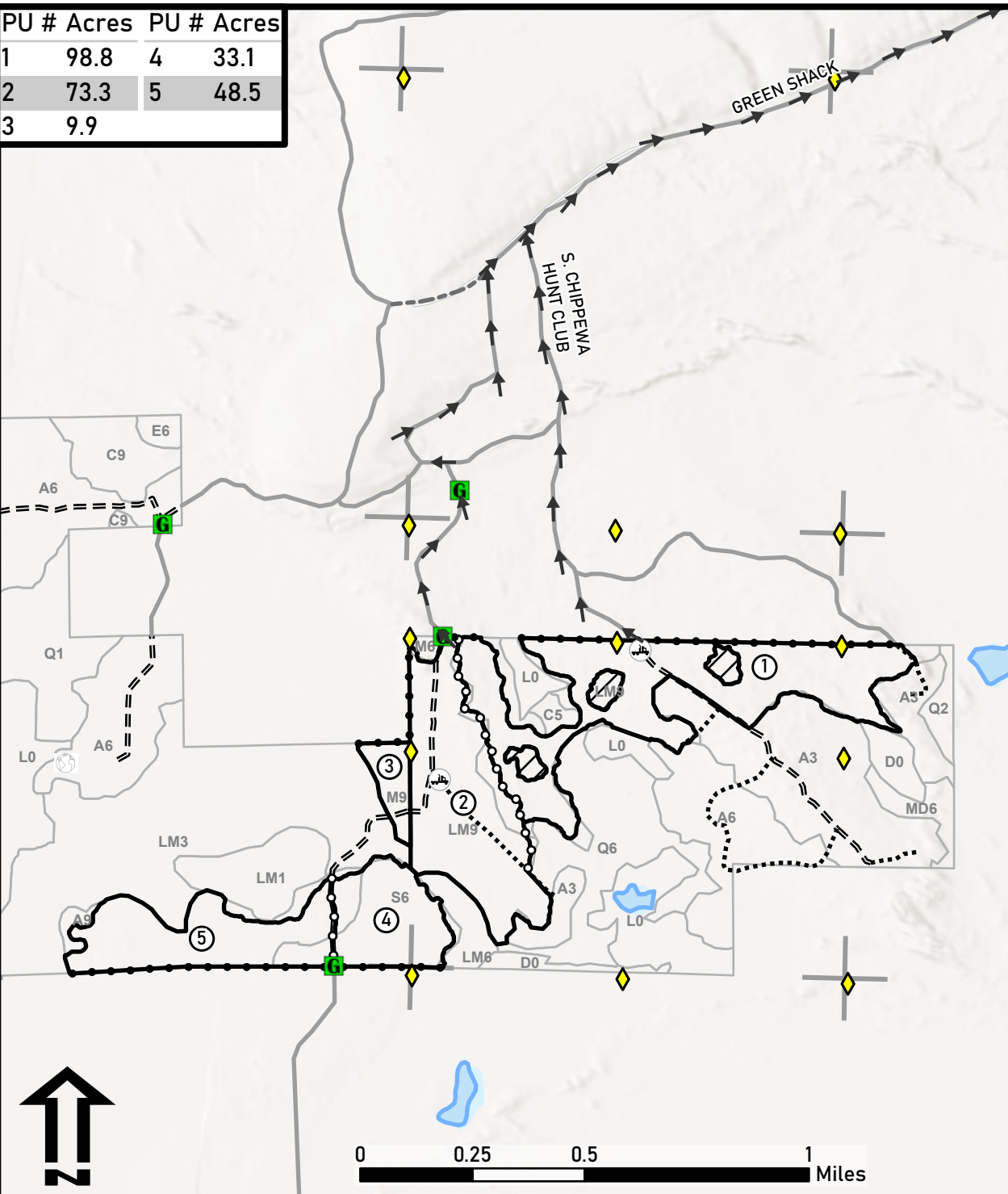
Density	
0 = Non Stocked	5 = Pole Timber Medium
1 = Seedling Sapling Poor	6 = Pole Timber Well
2 = Seedling Sapling Medium	7 = Saw Timber Poor
3 = Seedling Sapling Well	8 = Saw Timber Medium
4 = Pole Timber Poor	9 = Saw Timber Well

Eclipse Mix

Compartment: 42070 Acres: 263.6



PU #	Acres	PU #	Acres
1	98.8	4	33.1
2	73.3	5	48.5
3	9.9		



Legend	
	Payment Unit
	Against State (Red)
	Payment Unit (Yellow)
	Private Boundary (Blue)
	Survey Grade Corner
	Berm
	Gate
	Retention Zone
	MIRIS Section Corner
	Lakes and Rivers
	Primary Forest Road
	Secondary Forest Road
	Forest Access Route
	Paved Road
	Gravel Road
	County Road - Seasonal
	Private Road
	Landing
	Haul

