



### TIMBER SALE MAP

This information provided by authority of Part 525, 1994 PA 451, as amended.

Sale Number 42-014-24	Date 07/08/2024	
Scale 1:15,840	Page 1	Of 1

Forest Management Unit <b>Newberry Mgt Unit</b>	County <b>Luce</b>	Mapped By: <b>N Wheeler</b>
		Cruised By: <b>Newberry Unit Staff</b>

Township 49N	Range 10W	Section(s) and Subdivision(s) Sec. 24 SWSW; Sec. 25 NW,N1/2SW,SWSW;
-----------------	--------------	--

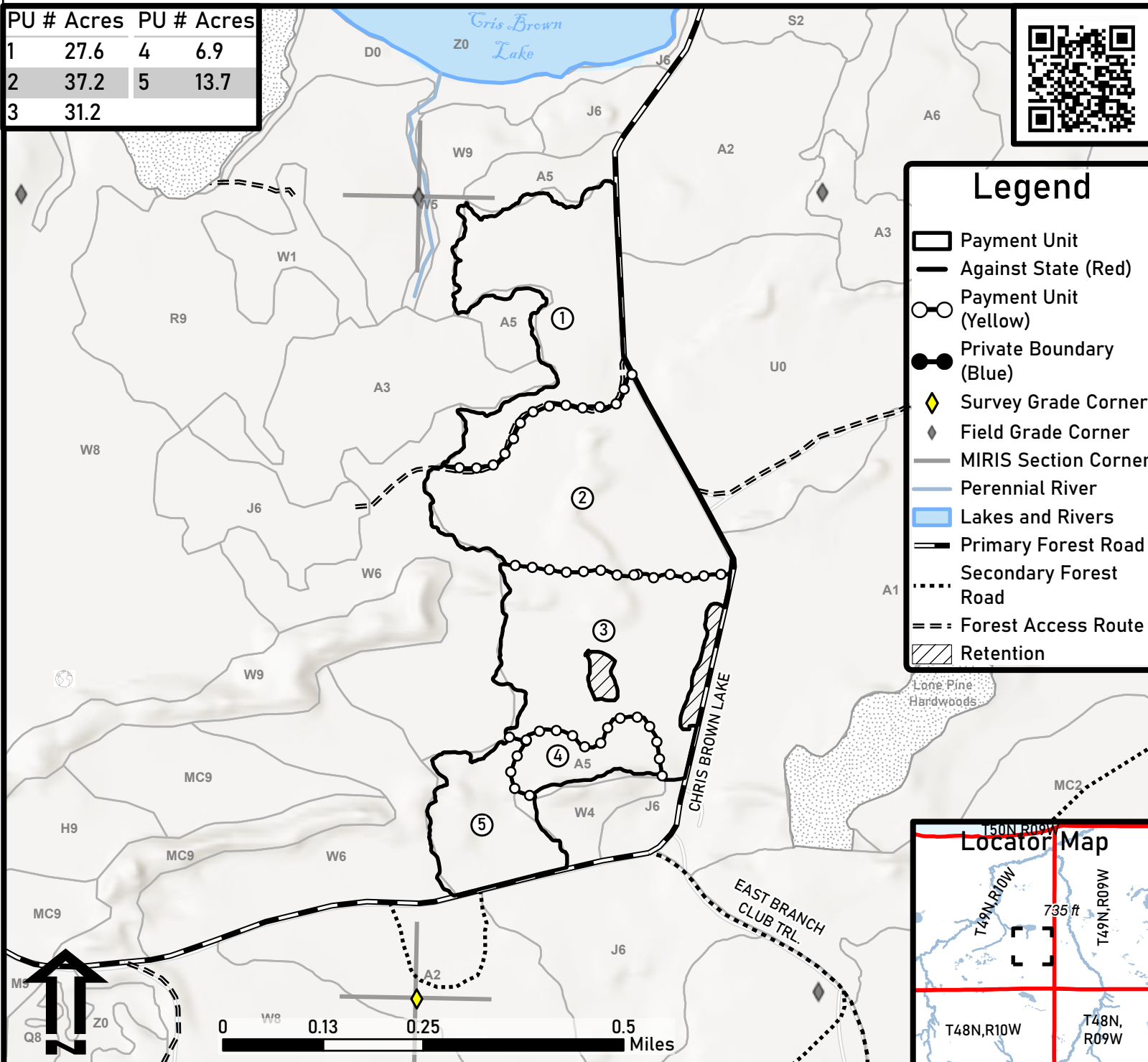
Cover Type			
A = Aspen	J = Jack Pine	O = Oak	U = Upland Brush
B = Paper Birch	K = Rock	P = Lowland Poplar	UM = Upland Mix Forest
C = Cedar	L = Lowland Brush	Q = Mixed Swamp Conifer	V = Bog or Marsh
D = Treed Bog	LM = Lowland Mix Forest	R = Red Pine	W = White Pine
E = Swamp Hardwoods	M = Maple, Beech, Birch	S = Black Spruce	X = Non Stocked
F = Spruce/Fir	MC = Mixed Conifer	T = Tamarack	Y = Sand
G = Grass	MD = Mixed Deciduous	Z = Water	
H = Hemlock	N = Marsh		

Density	
0 = Non Stocked	5 = Pole Timber Medium
1 = Seedling Sapling Poor	6 = Pole Timber Well
2 = Seedling Sapling Medium	7 = Saw Timber Poor
3 = Seedling Sapling Well	8 = Saw Timber Medium
4 = Pole Timber Poor	9 = Saw Timber Well

**CHRIS BROWN LAKE JACK PINE**  
Compartment: 42031 Acres: 116.7



PU #	Acres	PU #	Acres
1	27.6	4	6.9
2	37.2	5	13.7
3	31.2		



### Legend

- Payment Unit
- Against State (Red)
- Payment Unit (Yellow)
- Private Boundary (Blue)
- Survey Grade Corner
- Field Grade Corner
- MIRIS Section Corner
- Perennial River
- Lakes and Rivers
- Primary Forest Road
- Secondary Forest Road
- Road
- Forest Access Route
- Retention

