



# TIMBER SALE MAP

This information provided by authority of Part 525, 1994 PA 451, as amended.

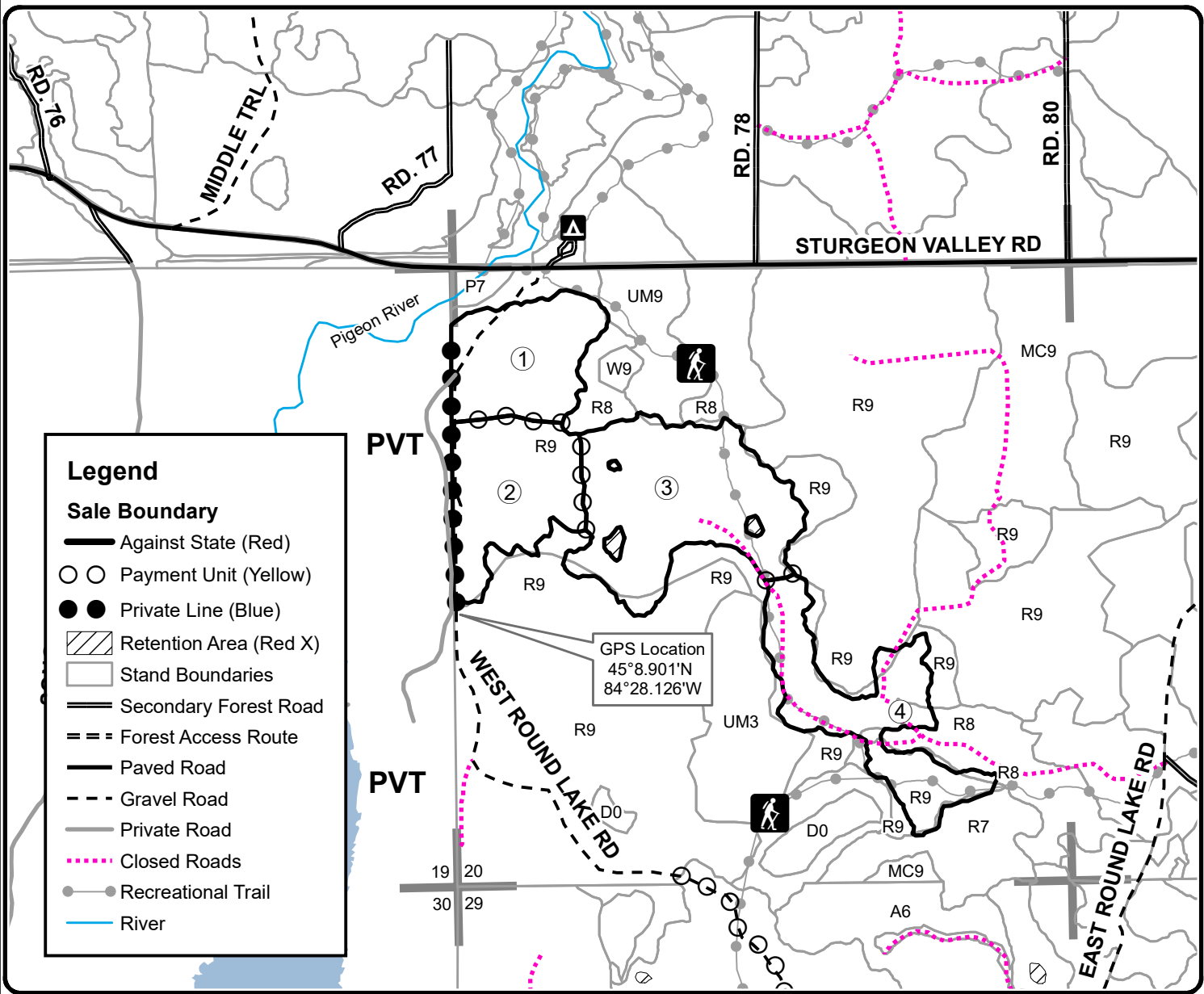
Forest Management Unit Pigeon River Country		County Otsego	Mapped By Rekowski	Date 09/27/2021	Page 1	of 1
Township 32N	Range 01W	Section(s) and Subdivision(s) 20: NW1/4, SWNE, N1/2SW, SE1/4		Scale 1:15,840		
<b>Cover Type</b>			<b>Density</b>			
A = Aspen B = Paper Birch C = Cedar D = Treed Bog E = Swamp Hdwoods F = Spruce Fir G = Grass	H = Hemlock J = Jack Pine L = Lowland Brush LM = Lowland Mixed M = Mpl, Bch, Brch MC = Mixed Conifer MD = Mixed Deciduous	N = Marsh O = Oak P = Lowland Poplar Q = Mixed Swamp Conifer R = Red Pine S = Black Spruce T = Tamarack	U = Upland Brush UM = Upland Mixed V = Bog or Marsh W = White Pine X = Non Stocked Z = Water	0 = Non Stocked 1 = Seedling Sapling Poor 2 = Seedling Sapling Medium 3 = Seedling Sapling Well 4 = Pole Timber Poor	5 = Pole Timber Medium 6 = Pole Timber Well 7 = Saw Timber Poor 8 = Saw Timber Medium 9 = Saw Timber Well	

PU	Acres	PU	Acres
1	26.4	4	31.5
2	29.1		
3	48.2		

## Pronto Pup Pine

### Compartment 038

135.2 Acres



**Legend**

**Sale Boundary**

- Against State (Red)
- ○ Payment Unit (Yellow)
- ● Private Line (Blue)
- ▨ Retention Area (Red X)
- Stand Boundaries
- Secondary Forest Road
- == Forest Access Route
- Paved Road
- - - Gravel Road
- Private Road
- ⋯ Closed Roads
- ● Recreational Trail
- River

