



# TIMBER SALE MAP

This information provided by authority of Part 525, 1994 PA 451, as amended.

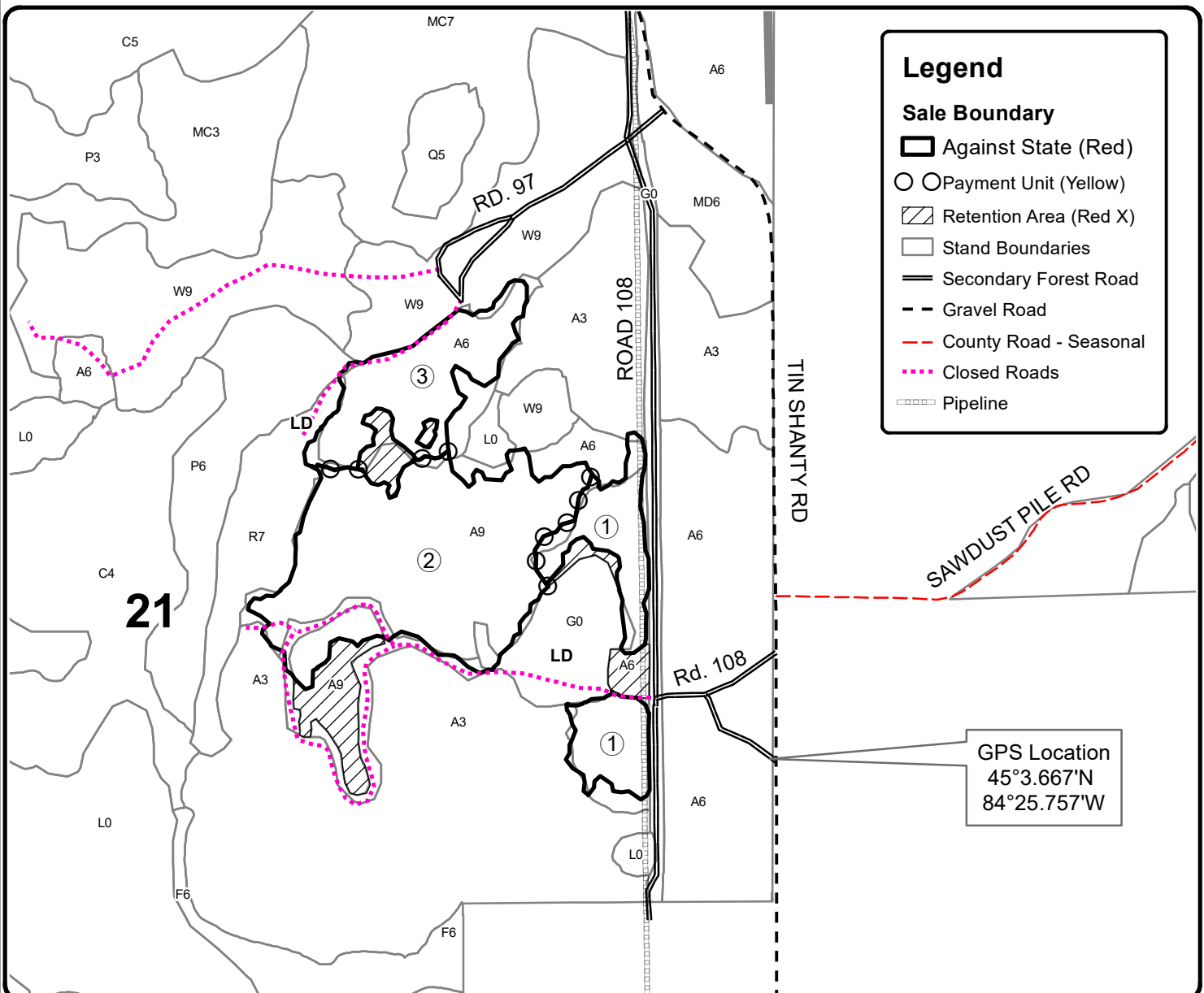
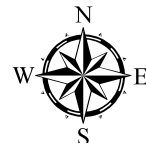
Forest Management Unit Pigeon River Country		County Otsego	Mapped By Rekowski	Date 06/29/2021	Page 1	of 1
Township 31N	Range 01W	Section(s) and Subdivision(s) 21: NENE, S1/2NE, N1/2SE		Scale 1:7,920		
<b>Cover Type</b>			<b>Density</b>			
A = Aspen	H = Hemlock	N = Marsh	U = Upland Brush	0 = Non Stocked	5 = Pole Timber Medium	
B = Paper Birch	J = Jack Pine	O = Oak	UM = Upland Mixed	1 = Seedling Sapling Poor	6 = Pole Timber Well	
C = Cedar	L = Lowland Brush	P = Lowland Poplar	V = Bog or Marsh	2 = Seedling Sapling Medium	7 = Saw Timber Poor	
D = Treed Bog	LM = Lowland Mixed	Q = Mixed Swamp Conifer	W = White Pine	3 = Seedling Sapling Well	8 = Saw Timber Medium	
E = Swamp Hdwoods	M = Mpl, Bch, Brch	R = Red Pine	X = Non Stocked	4 = Pole Timber Poor	9 = Saw Timber Well	
F = Spruce Fir	MC = Mixed Conifer	S = Black Spruce	Z = Water			
G = Grass	MD = Mixed Deciduous	T = Tamarack				

PU	Acres
1	6.5
2	19.5
3	6.9

## Tin Shanty Aspen

### Compartment 050

32.9 Acres



**Legend**

- Sale Boundary**
- Against State (Red)
- Payment Unit (Yellow)
- Retention Area (Red X)
- Stand Boundaries
- Secondary Forest Road
- Gravel Road
- County Road - Seasonal
- Closed Roads
- Pipeline

GPS Location  
45°3.667'N  
84°25.757'W

