



TIMBER SALE MAP

This information provided by authority of Part 525, 1994 PA 451, as amended.

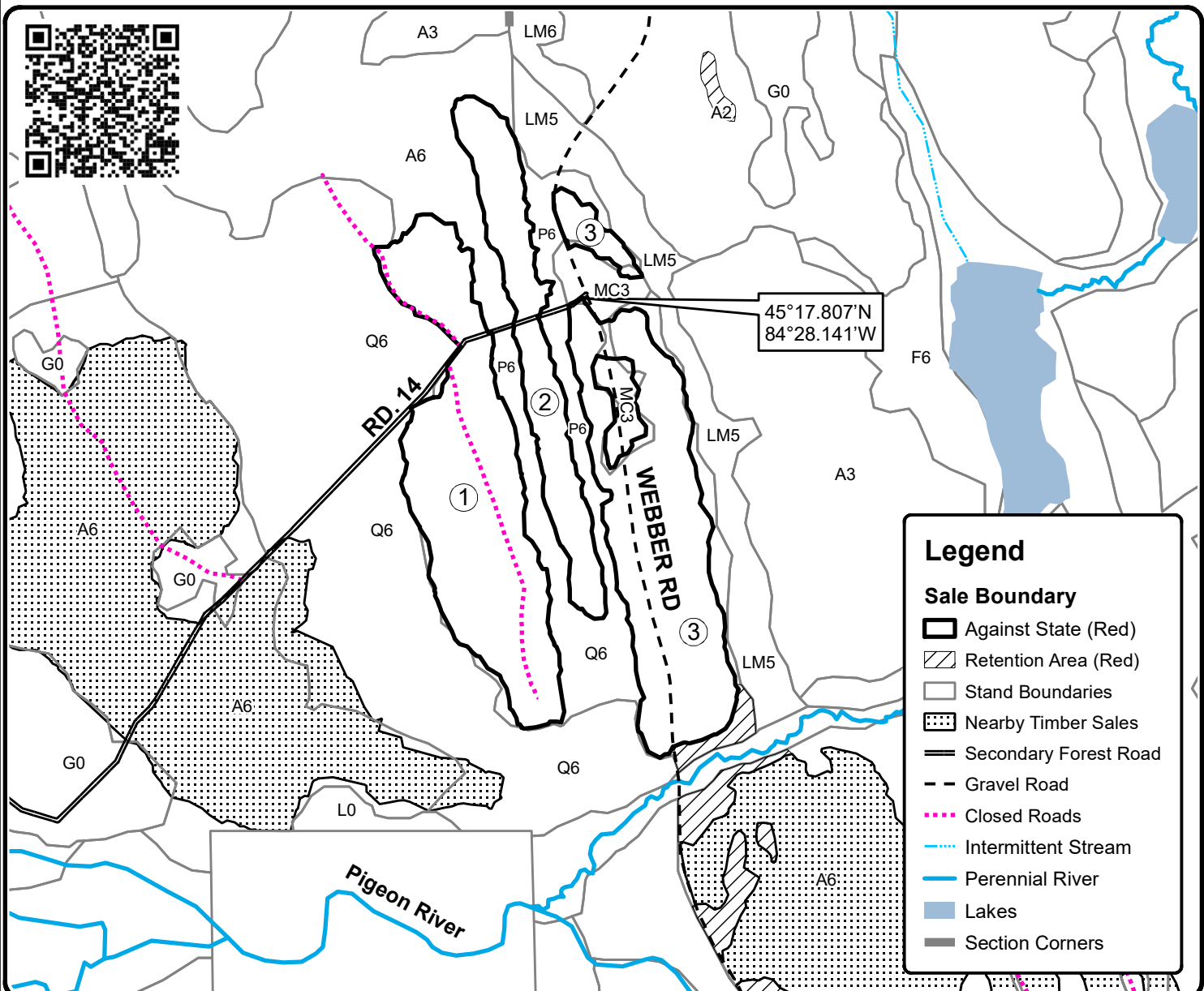
| | | | | | | |
|--|----------------------|--|-----------------------|-----------------------------|------------------------|---------|
| Forest Management Unit Pigeon River Country | | County Cheboygan | Mapped By Rekowski | Date 09/25/2022 | Page 1 | of 1 |
| Township 34N | Range 01W | Section(s) and Subdivision(s) 31: E1/2NE, NESE 32: W1/2NW, NWSW | | Scale 1:7,920 | | |
| Cover Type | | | Density | | | |
| A = Aspen | H = Hemlock | N = Marsh | U = Upland Brush | 0 = Non Stocked | 5 = Pole Timber Medium | |
| B = Paper Birch | J = Jack Pine | O = Oak | UM = Upland Mixed | 1 = Seedling Sapling Poor | 6 = Pole Timber Well | |
| C = Cedar | L = Lowland Brush | P = Lowland Poplar | V = Bog or Marsh | 2 = Seedling Sapling Medium | 7 = Saw Timber Poor | |
| D = Treed Bog | LM = Lowland Mixed | Q = Mixed Swamp Conifer | W = White Pine | 3 = Seedling Sapling Well | 8 = Saw Timber Medium | |
| E = Swamp Hdwoods | M = Mpl, Bch, Brch | R = Red Pine | X = Non Stocked | 4 = Pole Timber Poor | 9 = Saw Timber Well | |
| F = Spruce Fir | MC = Mixed Conifer | S = Black Spruce | Z = Water | | | |
| G = Grass | MD = Mixed Deciduous | T = Tamarack | | | | |

PU Acres

| | |
|---|------|
| 1 | 17.7 |
| 2 | 8.2 |
| 3 | 17.1 |

The Aspen Narrows

Compartment 002
43 Acres



Legend

Sale Boundary

- Against State (Red)
- Retention Area (Red)
- Stand Boundaries
- Nearby Timber Sales
- Secondary Forest Road
- Gravel Road
- Closed Roads
- Intermittent Stream
- Perennial River
- Lakes
- Section Corners

