



TIMBER SALE MAP

This information provided by authority of Part 525, 1994 PA 451, as amended.

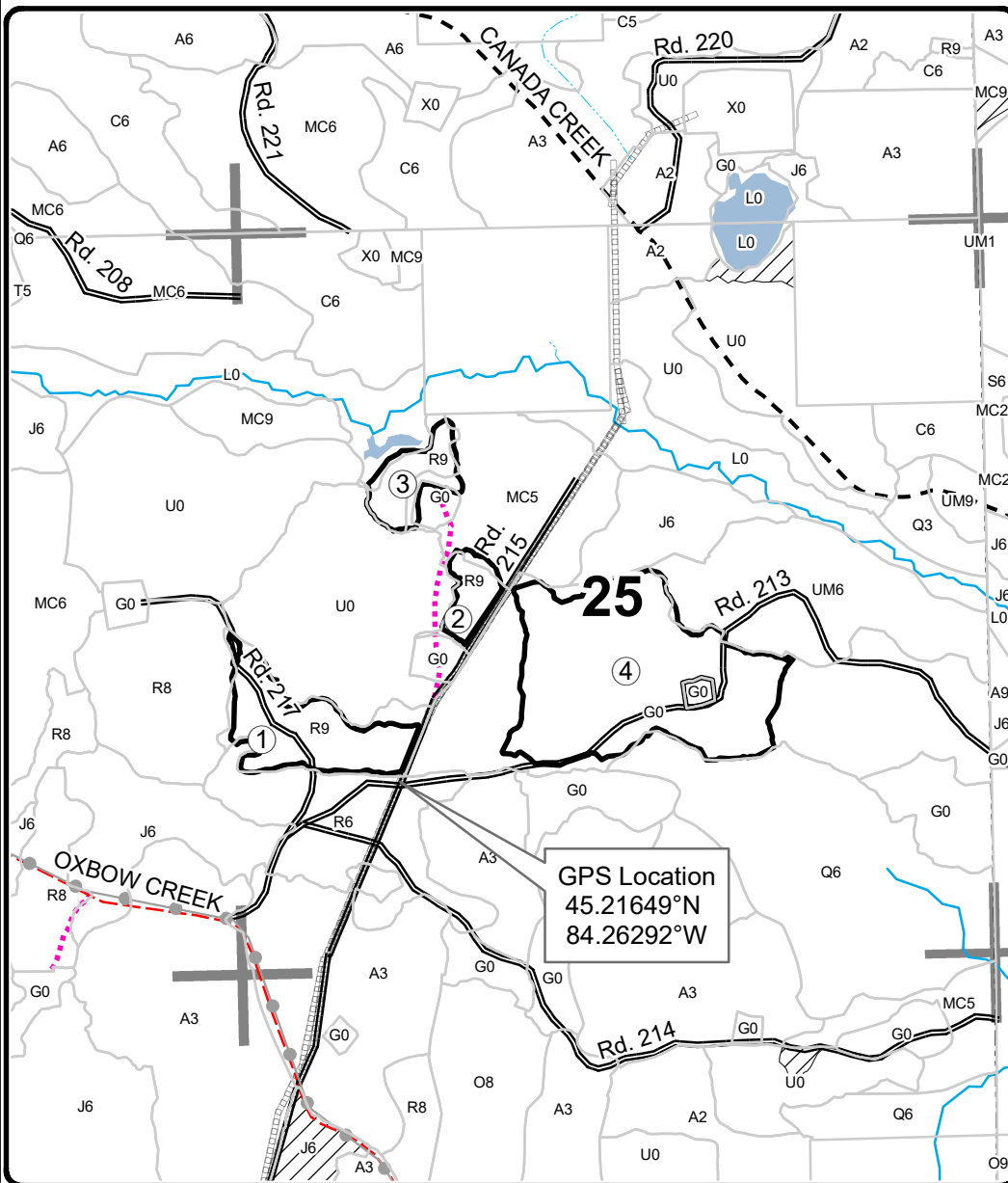
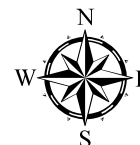
Forest Management Unit Pigeon River Country		County Cheboygan	Mapped By Thomas Barnes	Date 08/17/2023	Page 1	of 1
Township 33N	Range 01E	Section(s) and Subdivision(s) 25: S1/2NW,SWNE,N1/2SW,NWSE 26:NESE		Scale 1:15,840		
Cover Type				Density		
A = Aspen	H = Hemlock	N = Marsh	U = Upland Brush	0 = Non Stocked	5 = Pole Timber Medium	
B = Paper Birch	J = Jack Pine	O = Oak	UM = Upland Mixed	1 = Seedling Sapling Poor	6 = Pole Timber Well	
C = Cedar	L = Lowland Brush	P = Lowland Poplar	V = Bog or Marsh	2 = Seedling Sapling Medium	7 = Saw Timber Poor	
D = Treed Bog	LM = Lowland Mixed	Q = Mixed Swamp Conifer	W = White Pine	3 = Seedling Sapling Well	8 = Saw Timber Medium	
E = Swamp Hdwoods	M = Mpl, Bch, Brch	R = Red Pine	X = Non Stocked	4 = Pole Timber Poor	9 = Saw Timber Well	
F = Spruce Fir	MC = Mixed Conifer	S = Black Spruce	Z = Water			
G = Grass	MD = Mixed Deciduous	T = Tamarack				

PU	Acres	PU	Acres
1	13.8	4	42.9
2	6.2		
3	3.8		

Four Stand Red Pine 2

Compartment 061

66.7 Acres



GPS Location
45.21649°N
84.26292°W

Legend

- Against State (Red)
- Retention Area
- Secondary Forest Road
- Gravel Road
- County Road - Seasonal
- Temporary Management Access
- Lakes and Rivers
- Section Corners
- Pipeline

Locator Map

1:100,000

