



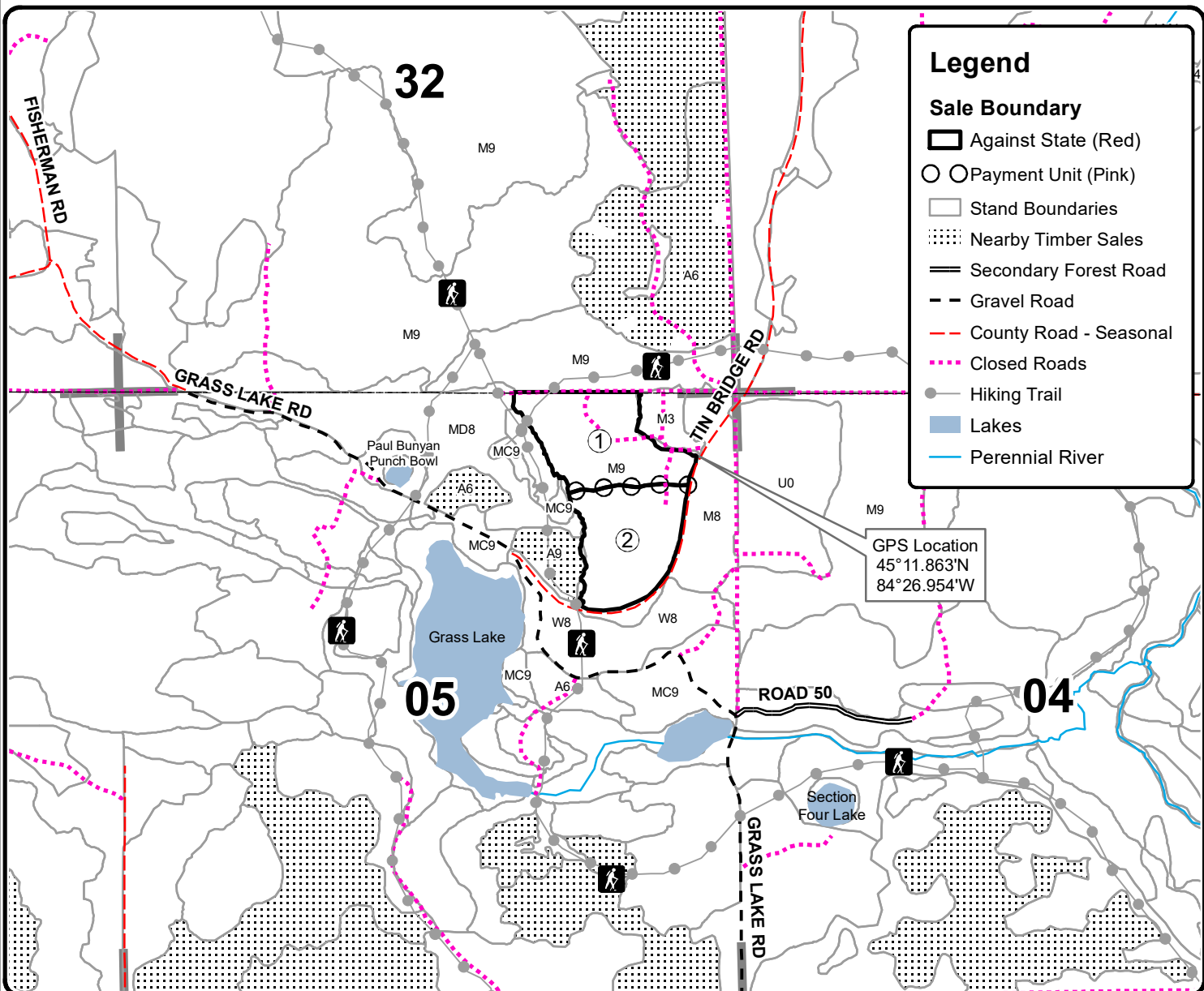
TIMBER SALE MAP

This information provided by authority of Part 525, 1994 PA 451, as amended.

| | | | | | | |
|--|----------------------|--|-----------------------|-----------------------------|------------------------|---------|
| Forest Management Unit Pigeon River Country | | County Otsego | Mapped By Rekowski | Date 04/11/2023 | Page 1 | of 1 |
| Township 32N | Range 01W | Section(s) and Subdivision(s) NE1/4 | | Scale 1:15,840 | | |
| Cover Type | | | | Density | | |
| A = Aspen | H = Hemlock | N = Marsh | U = Upland Brush | 0 = Non Stocked | 5 = Pole Timber Medium | |
| B = Paper Birch | J = Jack Pine | O = Oak | UM = Upland Mixed | 1 = Seedling Sapling Poor | 6 = Pole Timber Well | |
| C = Cedar | L = Lowland Brush | P = Lowland Poplar | V = Bog or Marsh | 2 = Seedling Sapling Medium | 7 = Saw Timber Poor | |
| D = Treed Bog | LM = Lowland Mixed | Q = Mixed Swamp Conifer | W = White Pine | 3 = Seedling Sapling Well | 8 = Saw Timber Medium | |
| E = Swamp Hdwoods | M = Mpl, Bch, Brch | R = Red Pine | X = Non Stocked | 4 = Pole Timber Poor | 9 = Saw Timber Well | |
| F = Spruce Fir | MC = Mixed Conifer | S = Black Spruce | Z = Water | | | |
| G = Grass | MD = Mixed Deciduous | T = Tamarack | | | | |

| PU | Acres |
|----|-------|
| 1 | 19.5 |
| 2 | 18.4 |

Overlook Oak Compartment 032 37.9 Acres



Legend

- Sale Boundary**
 - Against State (Red)
- Payment Unit (Pink)
- Stand Boundaries
- Nearby Timber Sales
- Secondary Forest Road
- Gravel Road
- County Road - Seasonal
- Closed Roads
- Hiking Trail
- Lakes
- Perennial River

GPS Location
45°11.863'N
84°26.954'W

