



TIMBER SALE MAP

This information provided by authority of Part 525, 1994 PA 451, as amended.

Sale Number 53-003-24	Date 10/05/2023	
Scale 1:10,000	Page 1	Of 1

Forest Management Unit Pigeon River Country Mgt Unit	County Otsego	Mapped By: Rekowski
		Cruised By: Rekowski

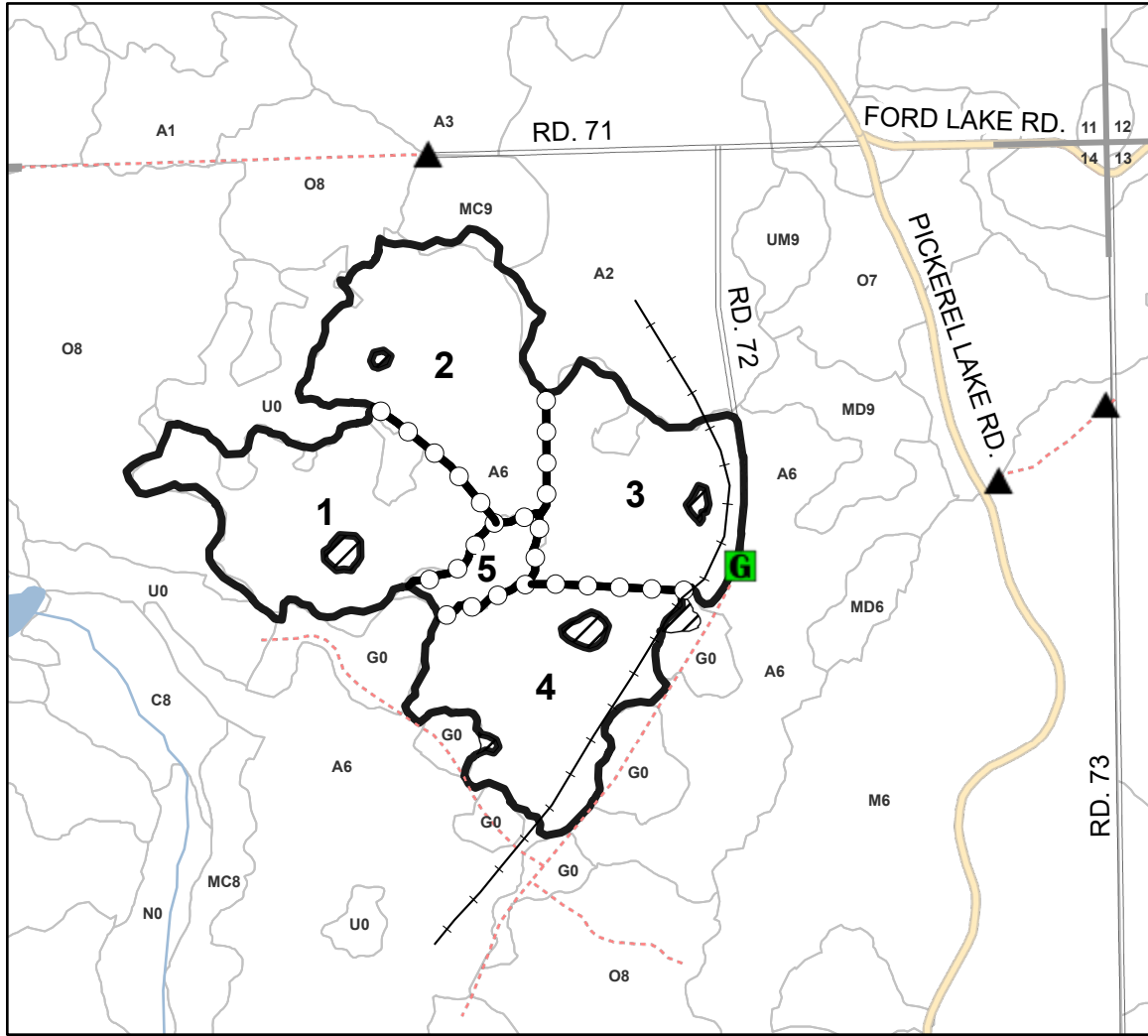
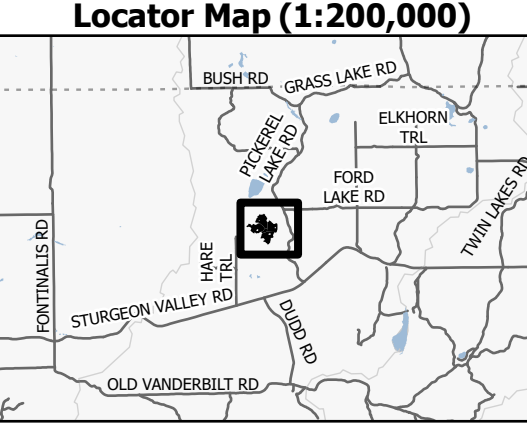
Township 32N	Range 02W	Section(s) and Subdivision(s) Sec. 14 NW,W1/2NE,NESW,NWSE;
-----------------	--------------	--

Cover Type			
A = Aspen	J = Jack Pine	O = Oak	U = Upland Brush
B = Paper Birch	K = Rock	P = Lowland Poplar	UM = Upland Mix Forest
C = Cedar	L = Lowland Brush	Q = Mixed Swamp Conifer	V = Bog or Marsh
D = Tread Bog	LM = Lowland Mix Forest	R = Red Pine	W = White Pine
E = Swamp Hardwoods	M = Maple, Beech, Birch	S = Black Spruce	X = Non Stocked
F = Spruce/Fir	MC = Mixed Conifer	T = Tamarack	Y = Sand
G = Grass	MD = Mixed Deciduous	Z = Water	
H = Hemlock	N = Marsh		

Density	
0 = Non Stocked	5 = Pole Timber Medium
1 = Seedling Sapling Poor	6 = Pole Timber Well
2 = Seedling Sapling Medium	7 = Saw Timber Poor
3 = Seedling Sapling Well	8 = Saw Timber Medium
4 = Pole Timber Poor	9 = Saw Timber Well

PU #	Acres
1	19.1
2	19
3	16.1
4	17.4
5	2.8

**Around the
Clock Again
Aspen**
74.4 Acres



Legend	
	Against State (Red)
	Payment Unit (Yellow)
	Retention Areas (Red)
	Stand
	Old railroad grade
	Gravel Road
	County Road - Seasonal
	Secondary Forest Road
	Administrative Access Only
	Non-DNR Road
	Berm
	Gate
	Perennial River
	MIRIS Section Corner

Use QR Code to open Map in App

