



TIMBER SALE MAP

This information provided by authority of Part 525, 1994 PA 451, as amended.

Sale Number 53-010-24	Date 09/28/2023	
Scale 1:20,000	Page 1	Of 1

Forest Management Unit Pigeon River Country Mgt Unit	County Otsego	Mapped By: Rekowski
		Cruised By: Rekowski

Township 32N	Range 02W /	Section(s) and Subdivision(s) Sec. 12 E1/2SE; Sec. 7 S1/2NW,SW;
-----------------	----------------	---

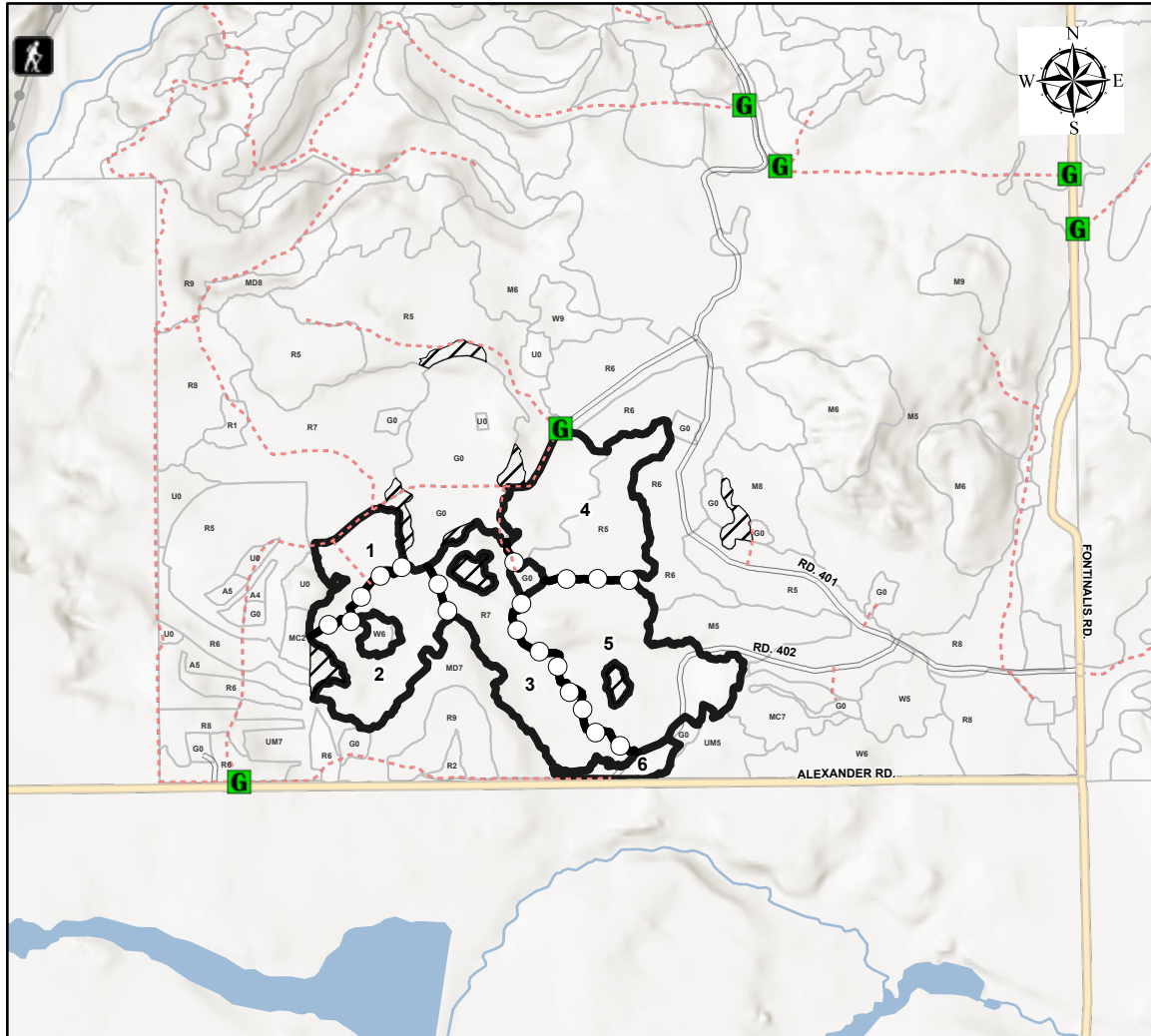
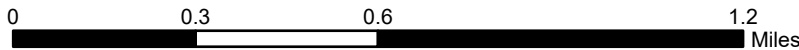
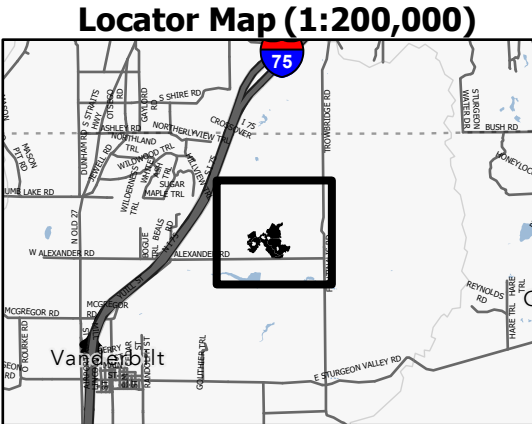
Cover Type			
A = Aspen	J = Jack Pine	O = Oak	U = Upland Brush
B = Paper Birch	K = Rock	P = Lowland Poplar	UM = Upland Mix Forest
C = Cedar	L = Lowland Brush	Q = Mixed Swamp Conifer	V = Bog or Marsh
D = Treed Bog	LM = Lowland Mix Forest	R = Red Pine	W = White Pine
E = Swamp Hardwoods	M = Maple, Beech, Birch	S = Black Spruce	X = Non Stocked
F = Spruce/Fir	MC = Mixed Conifer	T = Tamarack	Y = Sand
G = Grass	MD = Mixed Deciduous	Z = Water	
H = Hemlock	N = Marsh		

Density	
0 = Non Stocked	5 = Pole Timber Medium
1 = Seedling Sapling Poor	6 = Pole Timber Well
2 = Seedling Sapling Medium	7 = Saw Timber Poor
3 = Seedling Sapling Well	8 = Saw Timber Medium
4 = Pole Timber Poor	9 = Saw Timber Well

PU #	Acres	PU #	Acres
1	10.7	4	30.9
2	20.7	5	37.4
3	26.2	6	3.7

Hot Tub Pine Machine

129.7 Acres



Legend

- Sale Boundary (Red)
- Payment Unit (Yellow)
- Retention Areas (Red)
- Stand
- Paved Road
- Gravel Road
- County Road - Seasonal
- Private Road
- Primary Forest Road
- Secondary Forest Road
- Forest Access Route
- Administrative Access Only
- Non-DNR Road
- Gate

Use QR Code to open Map in App

