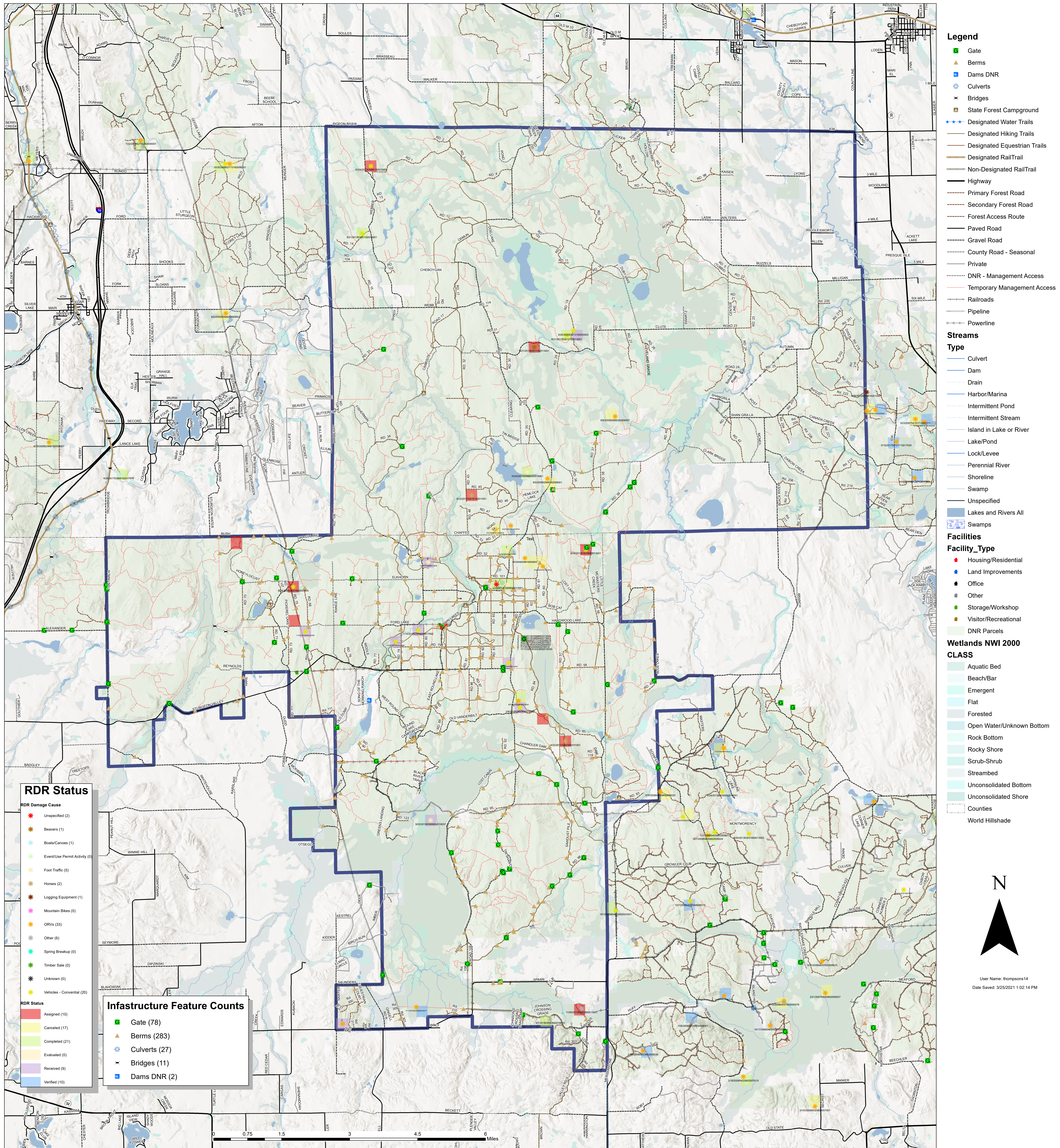


# Pigeon River Country Forest Infrastructure Planning



- ### Legend
- Gate
  - ▲ Berms
  - Dams DNR
  - ⊗ Culverts
  - × Bridges
  - State Forest Campground
  - ◆ Designated Water Trails
  - Designated Hiking Trails
  - Designated Equestrian Trails
  - Designated RailTrail
  - Non-Designated RailTrail
  - Highway
  - Primary Forest Road
  - Secondary Forest Road
  - Forest Access Route
  - Paved Road
  - Gravel Road
  - County Road - Seasonal
  - Private
  - DNR - Management Access
  - Temporary Management Access
  - Railroads
  - Pipeline
  - Powerline

- ### Streams
- #### Type
- Culvert
  - Dam
  - Drain
  - Harbor/Marina
  - Intermittent Pond
  - Intermittent Stream
  - Island in Lake or River
  - Lake/Pond
  - Lock/Levee
  - Perennial River
  - Shoreline
  - Swamp
  - Unspecified
  - Lakes and Rivers All
  - Swamps

- ### Facilities
- #### Facility\_Type
- Housing/Residential
  - Land Improvements
  - Office
  - Other
  - Storage/Workshop
  - Visitor/Recreational
  - DNR Parcels

- ### Wetlands NWI 2000 CLASS
- Aquatic Bed
  - Beach/Bar
  - Emergent
  - Flat
  - Forested
  - Open Water/Unknown Bottom
  - Rock Bottom
  - Rocky Shore
  - Scrub-Shrub
  - Streambed
  - Unconsolidated Bottom
  - Unconsolidated Shore
  - Counties
  - World Hillshade

- ### RDR Status
- RDR Damage Cause**
- Unspecified (2)
  - Beavers (1)
  - Boats/Canoes (1)
  - Event/Use Permit Activity (0)
  - Foot Traffic (5)
  - Horses (2)
  - Logging Equipment (1)
  - Mountain Bikes (0)
  - ORVs (33)
  - Other (6)
  - Spring Breakup (0)
  - Timber Sale (0)
  - Unknown (0)
  - Vehicles - Conventional (20)
- RDR Status**
- Assigned (10)
  - Canceled (17)
  - Completed (21)
  - Evaluated (0)
  - Received (9)
  - Verified (10)

- ### Infrastructure Feature Counts
- Gate (78)
  - ▲ Berms (283)
  - ⊗ Culverts (27)
  - × Bridges (11)
  - Dams DNR (2)



User Name: thompsons14  
Date Saved: 3/25/2021 1:02:14 PM

