



TIMBER SALE MAP

This information provided by authority of Part 525, 1994 PA 451, as amended.

Forest Management Unit Sault Ste. Marie	County Chippewa	Mapped By Brinks	Date 9/23/21	Page 1	of 3
Township T41N	Range R07E	Section(s) and Subdivision(s) Sec. 17- SENW, NESW, W1/2SW Sec. 18- SWNE, N1/2SE, SESE	Scale 1:15,840 1 inch= 1/4 mile		
Cruised By UMLMWS					

Cover Type

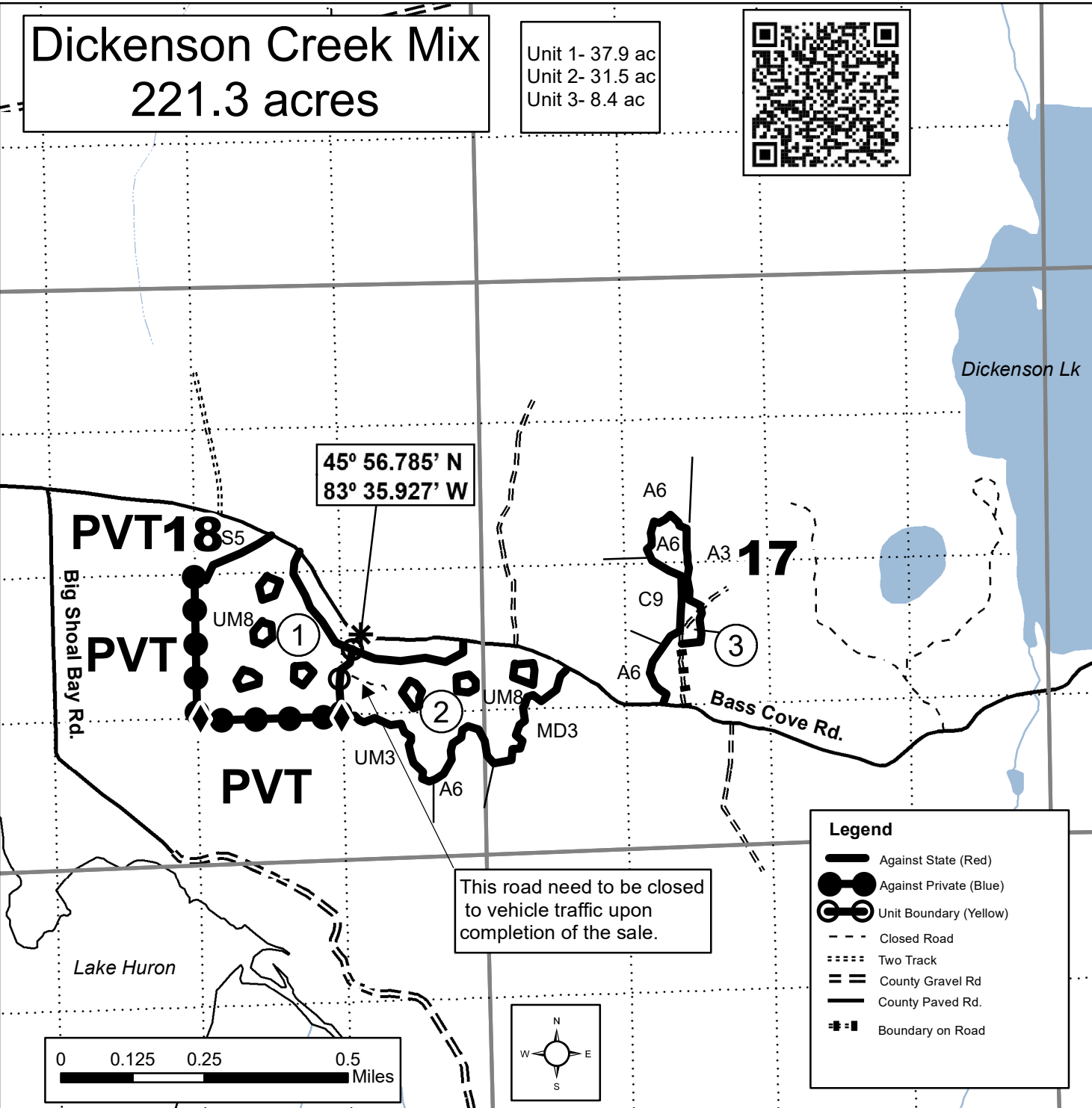
A = Aspen	H = Hemlock	N = Marsh	U = Upland Brush
B = Paper Birch	J = Jack Pine	O = Oak	UM = Upland Mixed
C = Cedar	L = Lowland Brush	P = Lowland Poplar	V = Bog or Marsh
D = Treed Bog	LM = Lowland Mixed	Q = Mixed Swamp Conifer	W = White Pine
E = Swamp Hdwoods	M = Mpl, Bch, Brch	R = Red Pine	X = Non Stocked
F = Spruce Fir	MC = Mixed Conifer	S = Black Spruce	Z = Water
G = Grass	MD = Mixed Deciduous	T = Tamarack	

Density

0 = Non Stocked	5 = Pole Timber Medium
1 = Seedling Sapling Poor	6 = Pole Timber Well
2 = Seedling Sapling Medium	7 = Saw Timber Poor
3 = Seedling Sapling Well	8 = Saw Timber Medium
4 = Pole Timber Poor	9 = Saw Timber Well

Dickenson Creek Mix
221.3 acres

Unit 1- 37.9 ac
Unit 2- 31.5 ac
Unit 3- 8.4 ac



This road need to be closed to vehicle traffic upon completion of the sale.

Legend

- Against State (Red)
- Against Private (Blue)
- Unit Boundary (Yellow)
- Closed Road
- Two Track
- County Gravel Rd
- County Paved Rd.
- Boundary on Road

